

# FamilyLink



Frances McClelland  
Institute for Children,  
Youth & Families

**FALL 2023**

*Improving lives of children, youth, and families*

## **Greetings from the Frances McClelland Institute for Children, Youth, and Families,**

In this annual report, we reflect on our achievements in 2023 and offer a glimpse into our plans for 2024. As detailed in this report, we pursued multiple strategies aimed at sharing timely, actionable research, including hosting a speaker series, producing research briefs, and sharing research generated by our affiliated faculty and students. In many ways, 2023 was a year of growth as we expanded our staff, formed partnerships focused on fostering opportunity here in Pima County, and provided new opportunities to support students. We also launched the State of Kindness Community Collective, a transformative initiative reflecting our commitment to actionable community-participatory research.

As always, the annual Frances McClelland Vision Awards Ceremony held on-campus in October was an inspirational event, as it provided an opportunity to recognize emerging and established leaders who contribute to improving our community by facilitating opportunities for children, youth and families to thrive. A striking theme at this year's ceremony was the power of setting big goals and centering the experiences and wisdom of those from marginalized communities to work collectively to create sustained change.

Among our noteworthy developments in 2023 was officially welcoming The Community Research, Evaluation & Development (CRED) team as an integral part of FMI. CRED is a dynamic interdisciplinary team specializing in evaluation, research design, data analysis, and community engagement. CRED's mission is to serve as a valuable resource and collaborator through innovative quantitative and qualitative research and evaluation methods. With a longstanding commitment to working closely with partners in Arizona, including tribes, government entities, justice systems, schools, and nonprofits, CRED focuses on generating accessible, actionable information to support informed program and policy decision-making. We look forward to leveraging CRED's expertise to drive impactful initiatives forward and to launch new collaborative projects and opportunities.

In 2023, in line with our commitment to community-university partnerships and educating the next-generation of engaged community leaders and scholars, we piloted a small program to provide paid applied undergraduate research internships for students working in community-based organizations affiliated with our FMI Advisory Council. Thanks to a grant we secured from the University of Arizona Foundation Board of Trustees, we are poised to expand on this program in Spring 2024 by increasing the number of internships and adding a professional development course for students.

Looking ahead to 2024, we will launch new strategic partnerships, a revamped FMI website with a fresh design, and enhanced strategies to share actionable research-based resources. We have planned a series of engaging events for 2024! In Spring 2024 we will host three talks in our Turbeville speaker series on timely research topics that include a support program for parents of trans and gender expansive youth, grassroots experiences across the Mexican and U.S. diaspora, and interactions among physiological reactivity, race and ethnicity and political ideology. We will host a film screening designed to connect research directly to community action for positive change. We're also looking forward to hosting research methods workshops facilitated by CRED.

We are very grateful to our supporters, donors, students, and event participants, for helping us to meet our goal to work collaboratively with community organizations and researchers to build strong communities that promote family resilience so that children and youth from marginalized backgrounds have the opportunity to thrive.

Please visit our website, [fmi.arizona.edu](https://fmi.arizona.edu), to learn about our research, events, and resources. Follow and like us on social media. Thank you for your support.

**-Melissa A. Barnett, Ph.D.**

*Director, The Frances McClelland Institute for Children, Youth, and Families  
Norton Endowed Chair in Fathers, Parenting and Families  
Professor, Human Development & Family Science*

## 2023 Year in Review:

- Hosted our annual Spring Poster Showcase: **28** posters were presented by undergraduate and graduate student researchers
- Hosted **5** talks in the Turbeville Speaker Series on various topics ranging from financial socialization messages to Kindness in organizations
- Co-sponsored **3** events in a series related to poverty in Tucson focused on the book *Poverty, By America* by Matthew Desmond
- Printed **29** posters for academic conferences
- Hosted our annual Vision Awards Ceremony; awarded **4** awards
- Released **1** new research brief in English and Spanish
- Awarded our **first** Lang Dissertation Fellowship
- Awarded **1** Lang Summer Fellowship
- Celebrated **25** HDFS students, faculty, and alumni who received awards, honors, grants, publications and other noteworthy achievements
- Celebrated **5** HDFS graduate students who completed their masters or doctorate degrees
- Placed **3** undergraduate researchers in community-based settings in Spring 2023
- Secured a **grant** from the University of Arizona Foundation Board of Trustees for Applied Community-Based Research Internships



FMI-affiliated faculty and students presented posters at the SRA 2023 Annual Meeting: Keeping Pace with a Changing World.

## Welcome Dr. Jeanette Maré



Dr. Jeannette Maré joined us in the Fall of 2023 as a research professor and Director of the Science of Kindness Community Collective (SciKind). The SciKind Team is working closely with university faculty, staff, and students, and with community members and organizations, to develop a theoretically-based and empirically informed model that will guide a community-wide effort to create a culture of kindness, learning and practice. SciKind's foundational "State of Kindness" research uses group concept mapping and the reasoned action framework to operationalize kindness and examine the underlying beliefs and psychological determinants of kind behavior in organizations and communities. This formative research is crucial for developing, implementing, and evaluating community kindness interventions. Jeannette is also the founder of Ben's Bells, a non-profit based in Tucson that inspires and teaches the intentional practice of kindness. <https://bensbells.org/>

## New Program Coord. - Bianca Levario



In October 2023, we welcomed a new FMI Program Coordinator, Bianca Levario. Bianca started serving the Tucson community in 2013 upon graduating from the University of Arizona with a Bachelor's degree in Spanish and Education. Having accumulated six years of invaluable experience in the public education sector, Bianca transitioned to higher education. In 2022, Bianca completed her Masters in Education Policy from The University of Arizona. Over the past four years, she has been instrumental in managing research grants in the social sciences, demonstrating her commitment to bridging research and practice to help promote inclusivity efforts among underserved populations. Currently serving as a Program Coordinator at the Frances McClelland Institute (FMI), Bianca coordinates various programs and events and oversees daily operations within the FMI community. She also helps coordinate the Science of Kindness Community Collective alongside Dr. Maré.

## Research Brief

"Cardiovascular Disease Risk for Women & Girls: Gender, A Compelling Social Determinant" by Kim-Peace Tuskey, MSW from the Mel & Enid Zuckerman College of Public Health. This brief analyzes gender-based risk of cardiovascular disease and the impact of the social determinants of health on health outcomes for women and girls. It also includes recommendations for policymakers and community members to reduce health risks as well as improve health outcomes. This brief is available in English and Spanish.

CARDIOVASCULAR DISEASE RISK FOR WOMEN & GIRLS: GENDER, A COMPELLING SOCIAL DETERMINANT

February 2023

kim peace-tuskey, MSW

INTRODUCTION

**Gender, a social construct, can intersect with other social determinants shaping cardiovascular health starting prenatally and extending across the lifespan.<sup>1,2</sup>**

What are we missing in public health and medicine? Despite our scientific progress:

- In 2016 the U.S. was ranked as low - 43rd in the world for life expectancy

Unless we make significant changes, the United States is projected to rank even lower:

- 64th in the world for life expectancy by the year 2040<sup>3</sup>

It is imperative to move beyond a 'sick-care' system that focuses primarily on the symptoms that bring people into the doctor's office, but instead invest in creating a health-care system that starts in our early years.

This brief presents empirically-based data regarding the powerful roles that social determinants of health (SDoH) play in the health and well-being of women and girls, specifically related to the increased gender-based risk for cardiovascular disease (CVD). This brief reviews the literature, highlights problematic health outcomes, and makes recommendations for practitioners, policymakers and community members to reduce risks and increase healthy outcomes.

Economic Stability: In the U.S. 1 in

## The 2023 Frances McClelland Vision Awards Ceremony

The Vision Awards were created to celebrate the legacy of Frances McClelland, who was a generous and tireless advocate for children, youth, and families, especially those experiencing adversity and injustice. Frances exemplified, supported, and celebrated resilience during her lifetime. The annual awards are given to those who share Frances's and FMI's vision of strong communities that support family resilience so that all children and youth, especially those who are most disadvantaged, have the opportunity to thrive. We honored the legacy of another late visionary leader in our community, Richard Elías, a longtime community advocate and leader, who served on the Pima County Board of Supervisors and the FMI Advisory Council. This year, we recognized three outstanding individuals and a local community organization who are working towards improving the well-being of children, youth, families, and community.

- The Frances McClelland Vision Award - Bill Voigt
- The Richard Elías Legacy Award - Josefina Ahumada
- The Frances McClelland Youth Vision Award - Lilian German Noriega
- The Frances McClelland Spirit Organizational Award - The Community Coalition for Heart Health Education

To learn more about the award winners and watch the ceremony video, please visit <https://fmi.arizona.edu/content/2022-frances-mcclelland-vision-award-ceremony>.





## Lang Student Research Awards



Congratulations to our first ever Lang Dissertation Fellow: Selena Carbajal. Selena will be using the Lang Dissertation Fellowship to pursue her dissertation titled, *Bicultural Identity Integration and Bicultural Competence in Latinx Samples*. We are pleased to support her contribution to the field of human development and family science by advancing our understanding of factors that contribute to youth wellbeing.



Congratulations to Sydney Hainsworth, HDFS graduate student, who was selected as the recipient of the 2023 Lang Summer Fellowship. This fellowship supports HDFS graduate students to write first-author manuscripts that will advance understanding of factors that contribute to the wellbeing of children, youth, and families. Sydney wrote a manuscript titled, *Exploring the Impact of the COVID-19 Pandemic on the Identity of Trans and Gender Non-Binary Youth*.

## Graduate Student Accomplishments

Congratulations to the 2023 FMI Graduate Students who completed their master's thesis or dissertations in Human Development & Family Science.



Victoria Cooper, MS  
Thesis: *Income and African American Fathers' Parenting: Associations with Language Development in Early Childhood*



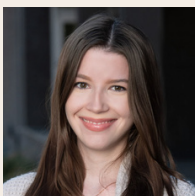
Marissa Hettinger, MS  
Thesis: *Climate Anxiety and Millennials' Propensity to Save for Retirement: An Exploratory Study*



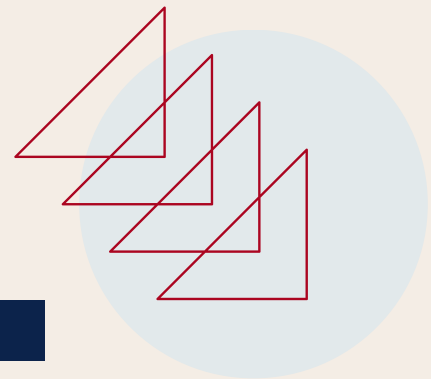
Ashley Kuelz, PhD  
Dissertation: *Interpersonal Dynamics of Social Interaction*.  
Dr. Kuelz has begun a postdoctoral fellowship at Bryn Mawr College.



Rayni Thomas, PhD  
Dissertation: *Examining Developmental Assets among LatinX Adolescents*  
Dr. Thomas has begun a postdoctoral fellowship at the University of Nebraska - Lincoln.



Kealie Walker, MS  
Thesis: *Choosing Kindness: Middle School Students' Perceptions of Kindness, Belonging, and Teachers on Campus*



## 2023 FMI Student Poster Showcase

Concluding the Spring semester of 2023, we hosted our annual Poster Showcase featuring 22 presentations by graduate and undergraduate students. Posters encompassed a variety of projects, including undergraduate honors theses, independent study projects, graduate student research showcased at professional conferences, and the culminating projects from undergraduate courses on Program Planning and Evaluation and Research Methods. Archived on our website, this lively event serves FMI's goal to nurture the future generation of scholars and community leaders.

## 2023 FMI STUDENT POSTER SHOWCASE PHOTOS



## APPLYING RESEARCH TO TACKLE PRESSING PROBLEMS

We co-sponsored a series of local events aimed at highlighting community-based solutions to reduce poverty and increase opportunity and prosperity. These events included a poverty workshop where community members learned more about the realities of living in poverty, a book club meeting focused on discussing the thought-provoking book "Poverty, By America" by sociologist Matthew Desmond, and a community meeting to identify solutions and challenges to end poverty in Pima county. FMI was honored to collaborate on these events with the Primavera Foundation, Social Venture Partners Tucson, the Pima County Office of Community/Workforce Development, and The Community Foundation for Southern Arizona.

Stay tuned for more updates as we continue to join forces in organizing events that aim to raise awareness, build shared understanding, and work towards increasing opportunities for children, youth and families to thrive. Together, we can make a difference and help our community bloom.



## Thank you for supporting FMI!

Thank you to all of our donors and to our 2023 Vision Awards sponsors.



*Jim & Vicki Click  
& Family*

## UPCOMING EVENTS

- **Friday, January 26, 2024 from 1:00 - 2:15 PM**  
Pamela Turbeville Speaker Series with Dr. Em Matsuno: "Development and Effectiveness of the Parent Support Program, an Online Intervention for Parents and Caregivers of Trans and Gender Expansive Youth". **Hybrid event. MCPRK RM 402 or Zoom:**  
[https://arizona.zoom.us/webinar/register/WN\\_f96zwQRUTPuTQtXVXu5L-Q](https://arizona.zoom.us/webinar/register/WN_f96zwQRUTPuTQtXVXu5L-Q)
- **Thursday, February 15, 2024 from 5:30 - 7:00 PM**  
Co-hosting a film screening with the Child Advocacy Center of Southern Arizona called: "Resilience: The Biology of Stress & The Science of Hope". **In person event. MCPRK RM 105.** <https://forms.office.com/r/McXKYAzRG4>
- **Friday, February 16, 2024 from 1:00 - 2:15 PM**  
Pamela Turbeville Speaker Series with Dr. Maurice Rafael Magaña: "Multimodal Archives and Multi-sited Presence: Cultural Production, Intergenerational Activism, and Belonging in Diasporic Communities". **Hybrid event. MCPRK RM 402 or Zoom:**  
[https://arizona.zoom.us/webinar/register/WN\\_y6xKlz-9S72R2dQMOCdhHQ](https://arizona.zoom.us/webinar/register/WN_y6xKlz-9S72R2dQMOCdhHQ)
- **Friday, March 22, 2024 from 1:00 - 2:15 PM**  
Pamela Turbeville Speaker Series with Dr. Frank Gonzalez: "Does Physiological Threat Response Predict Political Conservatism? The Role of Race and Ethnicity". **Hybrid event. MCPRK RM 402 or Zoom:**  
[https://arizona.zoom.us/webinar/register/WN\\_jqSsiJYxQA-luScD9pLLYA](https://arizona.zoom.us/webinar/register/WN_jqSsiJYxQA-luScD9pLLYA)
- **Friday, April 26, 2024 from 12:30 - 2:30 PM**  
FMI Student Poster Showcase. **In person event. MCPRK RM 425.**

## ABOUT FMI



The Frances McClelland Institute for Children, Youth, and Families at the University of Arizona bridges research and practice by supporting innovative research to tackle the most pressing issues facing families today, partnering to put research into the hands of families and practitioners, and educating the next generation of scholars and community leaders. We use research to promote family and community resilience so that children and youth experiencing adversity have opportunities to thrive.

Private support is fundamental to the origin and sustainability of the Frances McClelland Institute. We hope you partner with us in our mission to build strong communities that promote family resilience so that children and youth from marginalized backgrounds have the opportunity to thrive. Please invest in our work by visiting our website.



<https://fmi.arizona.edu/donors>



Frances McClelland  
Institute for Children,  
Youth & Families

**Address:**  
PO Box 210078  
Tucson, AZ 85721-0078

**Email:**  
[families@cals.arizona.edu](mailto:families@cals.arizona.edu)

**Phone:** 520.621.8067  
**Fax:** 520.621.4979

**Website:**  
<https://fmi.arizona.edu/>

FOLLOW US ON SOCIAL MEDIA!



Facebook, LinkedIn, Twitter: @FMIaz

Instagram: @uazfmi