



## Greetings from the Frances McClelland Institute for Children, Youth and Families,



In this annual report, we highlight our accomplishments from 2021, and we preview our plans for 2022. This year has continued to present unprecedented challenges as we have navigated the changing nature of the pandemic and uneven recovery efforts. The pandemic and associated multidimensional stressors have made the work of FMI and all of our partners more relevant than ever. On the one hand, longstanding social inequities have been exacerbated. On the other hand, the challenges associated with the pandemic have highlighted the importance of family relationships, positive social connections, and the critical need to communicate research-based information in ways that people can understand and use. These experiences have reinforced our commitment to harness the power of research, outreach, education and collaboration to build strong communities that promote family resilience so that children and youth from disadvantaged and marginalized backgrounds have the opportunity to thrive.

We continued to host events virtually throughout 2021. This virtual format has helped us to increase our reach, as we regularly had attendees join us virtually from around the country. We held another successful and inspirational Vision Awards Ceremony that provided us with an opportunity to recognize individuals, organizations and emerging leaders who are building stronger communities and positively impacting children, youth and families.

To reach our goal of translating research to reach practitioners, families and community members, we released four research briefs in English and Spanish. Research brief topics were caregiving challenges during the pandemic, economic opportunity in Tucson, youth mental health during the pandemic, and the challenges of school reopenings for adolescents.

We have increased our online impact. Our social media presence has garnered new followers, and record numbers of shares. The Turbeville Speaker series and other events that we post to YouTube have more views than ever before. Thank you to all of you who have contributed to this success in getting timely research into the hands of people who can use it to improve the lives of vulnerable children, youth and families.

We have built new collaborations and community connections. We were pleased to work with Dr. Ric Wood from the Norton School to convene a Task Force comprised of local human service leaders, including many members of our FMI Advisory Council, to begin the process of creating new programs to prepare University of Arizona graduates to have successful careers in filling critical needs in human services. This work will continue in 2022. FMI partnered with Cooperative Extension around programming for couples relationship education, and we are about to begin a newly funded partnership to enhance professional development for Extension staff in family science.

Looking ahead to 2022, we will host two talks in the Turbeville Speaker Series this spring focused on health messages and wellbeing among Latinx and indigenous communities. We will also host our annual faculty data blitz and student research poster showcase. We are very much looking forward to hosting a workshop on data management that was originally scheduled for 2020. This workshop, led by Dr. Lorey Wheeler from the University of Nebraska, will inform the practices of researchers and those working in the community.

Finally, we have renewed our focus this year on raising funds that will allow us to sustain and increase our collective impact. We launched virtual event sponsorships for the Vision Awards, which fueled a significant increase in our annual fundraising. We will learn from and build on this success for next year's awards ceremony. We are planning a crowdfunding campaign focused on student research support in the spring. We are very grateful to everyone who has made a gift to support our work.

Please visit our website at <https://fmi.arizona.edu> to learn about our research, events, and resources, and to watch videos of the Tuberville Speaker Series. Follow and like us on social media to keep up with research highlights and events from the Institute. Thank you for your support.

### Melissa A. Barnett, Ph.D.

Director, The Frances McClelland Institute for Children, Youth, and Families  
Norton Endowed Chair in Fathers, Parenting and Families  
Associate Professor, Family Studies and Human Development



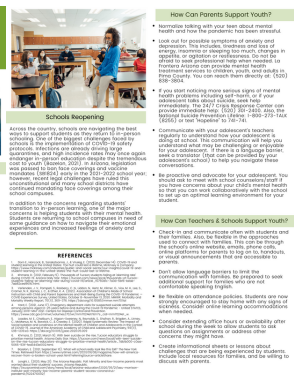


## Newly Released FMI Publications (continued)

"Adolescents and COVID-19: School Re-Openings and Mental Health and Academic Challenges" was written by the Bianca Levario, Eniola Idowu, Cynthia Blockburger, Ph.D., Dr. Katharine Zeiders, and Dr. Ada Wilkinon-Lee.

This brief highlights stressors of students returning to in-person learning amidst the COVID-19 pandemic and the continuing changes in school policies regarding safety protocols that are posing serious academic and mental health challenges for youth and families.

To read any of these briefs, please visit <https://fmi.arizona.edu/publications>.



### ASIAN VOICES DURING THE PANDEMIC: CHANGES IN ETHNIC IDENTITY, DISCRIMINATION, AND ACTIVISM

Sei Eun Kim, Zhenqiang Zhao, Jared Barnett, Kiera Coulter, Rayni Thomas & Russell Toomey

## Pandemic Impacts on Children, Youth, and Families Series

In response to the pandemic, in spring 2020, two of the events in our speaker series were organized as symposia and featured three talks on related topics about the effects of the pandemic on children, youth and families. Featured speakers were from across the University of Arizona.

You can now watch the series on our YouTube Channel.

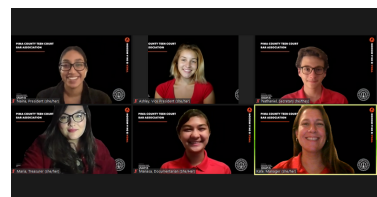
## The 2021 Virtual Frances McClelland Vision Awards Ceremony

The Vision Awards were created to celebrate the legacy of Frances McClelland, who was a generous and tireless advocate for children, youth, and families, especially those experiencing adversity and injustice. Frances exemplified, supported, and celebrated resilience during her lifetime. The annual awards are given to those who share Frances's and FMI's vision of strong communities that support family resilience so that all children and youth, especially those who are most disadvantaged, have the opportunity to thrive.

We are honored to continue the legacy of Richard Elías, a longtime community advocate and leader, who served on the Pima County Board of Supervisors and the FMI Advisory Council by making an award in his name. This year, we recognized three outstanding individuals, two youth groups, and a local Tucson community organization who are all working towards improving the well-being of children, youth, families, and community.

- 2021 Frances McClelland Vision Award - Linda Leatherman
- 2021 Richard Elías Legacy Award - Alonzo Morado
- 2021 Frances McClelland Youth Vision Award - Alyssa Norris
- 2021 Frances McClelland Youth Group Vision Award - Project Smile AZ (Hurshneet and Pravneet Chadha)
- 2021 Frances McClelland Youth Group Vision Award - The Officers of Teen Court Bar Association (YWCA)
- 2021 Frances McClelland Spirit Organizational Award - Step Up to Justice

To learn more about the award winners and watch the ceremony video, please visit <https://fmi.arizona.edu/2021VisionAwardCeremony>



## Congratulations 2021 Lang Summer Fellow!



Elia Bueno, FSHD Doctoral Student, was selected last spring as the 2021 Lang Summer Fellow. The fellowship affords students like Elia the opportunity to write manuscripts that will advance understanding of factors that contribute to the wellbeing of children, youth, or families. She submitted her manuscript titled, "That was the biggest help": The Importance of Familial Support for STEM Community College Students" to Journal of Frontiers in Education.

This study reveals the informal instrumental and socio-emotional support that non-traditional (e.g., Latinx, Black, Indigenous, lower-income, and first-generation) college students receive from family members that combat experiences of marginalization and contribute towards their self-efficacy. The funds of knowledge framework is applied to investigate the value family support holds for students in navigating STEM challenges and expand the definition of family to include romantic partners and extended family.

## Graduate Student Funding

Congratulations to the Zhenqiang Zhao for receiving the FMI Dissertation Award to support data collection for his dissertation study, "The Process of Sexual Orientation Disclosure and Concealment: Implications for a Multi-Dimensional Construct among Youth." Zhen was also awarded funding from GPSC Graduate and Professional Student Council for his dissertation.

Zhen also was awarded the CALS Ph.D. Meritorious Graduate Teaching Award on December 9, 2021.



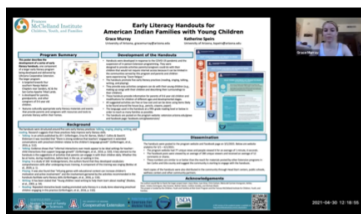
## Faculty Data Blitz

Due to the COVID-19 pandemic, we held our Faculty Data Blitz event virtually in the Spring 2021 semester. We had a great turn out of presenters from the Norton School of Family and Consumer Sciences research faculty and University of Arizona Cooperative Extension Agents who shared their current research in brief 5-minute presentations.

To learn more, please visit [https://fmi.arizona.edu/faculty\\_data\\_blitz](https://fmi.arizona.edu/faculty_data_blitz).



## FMI Student Poster Showcase



The FMI Student Poster Showcase is an annual event where graduate and undergraduate students come together to present their research on a variety of topics centered around improving the lives of children, youth, and families. This past spring, we had a total of 17 students participate in the virtual event. Some of the students presented independent research projects they conducted with mentorship provided by Family Studies and Human Development (FSHD) faculty. Other participants were enrolled in Dr. Ric Wood's FSHD 408 - Program Planning and Evaluation course.

These students presented their end of the semester projects which consisted of developing and/or evaluating individual or family focused programs for schools and communities.

To learn more, please visit <https://fmi.arizona.edu/content/fmi-student-poster-showcase>.



Congratulations to Pamela Turbeville for receiving the University of Arizona Alumni of the Year Award for the University of Arizona College of Agriculture and Life Sciences! This honor recognizes alumni for their achievements, public service, advocacy for education, volunteerism and service to students, the colleges and the university. Pamela Turbeville received her bachelor’s degree in Family and Consumer Sciences and Education in 1972. We are thankful for her support and commitment to the Norton School and FMI, including her funding of the Pamela J. Turbeville Speaker Series.

## Graduate Student Accomplishments



Pictured Left to Right: Dr. Xiaomin Li, Dr. Lorey Ligon, Dr. Sei Eun Kim, and Sydney Hainsworth

Dr. Xiaomin Li successfully defended her dissertation, “External Stressors, Resources, and Relational Outcomes Among Underrepresented Couples: Actor-Partner Interdependence Models” on Monday, February 15, 2021. She accepted a position as Assistant Professor of Applied Social Sciences at Hong Kong Polytechnic University in the Fall of 2021.

Dr. Torey Ligon, Program Manager for Take Charge America Institute in the Norton School of Family and Consumer Sciences, successfully defended her dissertation, “Two cooks in the kitchen: Effects of shared decision-making about food provisioning among dual-income earning couples in the US” on May 5, 2021.

Dr. Sei Eun Kim successfully defended her dissertation, “An Exploration of Family Racial-Ethnic Socialization of East Asian Americans in Racialized America” on August 11, 2021. Dr. Kim accepted a Postdoctoral Fellowship in the Culture and Health Promotion of Minority Youth & Families Lab at Teachers College, Columbia University.

Congratulations to Sydney Hainsworth who successfully defended their master’s thesis on Monday, October 25, 2021. Sydney’s thesis is titled: “Comparing sexual orientation identity development in plurisexual versus monosexual Latinx youth.”

## Thank you for supporting FMI!

For the first time ever, we established event sponsorships for our FMI Vision Awards Ceremony, and we are so thankful for this year’s sponsors. Each of our sponsors will help fund many of FMI’s upcoming events, like the Student Poster Showcase, and publications that help improve the lives of children, youth, and families.

### Teal Sponsors



### Green Sponsors

Laura Scaramella and Aaron Thomas

### Solidarity Sponsors

- Anonymous (In memory of Richard Elias)
- Linda Leatherman (In honor of Richard G. Fimbres)
- Joanne Karolzak (in memory of her parents)
- Ana Lucero, FMI Family Advisory Council Member
- Erin Lyons, FMI Family Advisory Council Member
- Michael McDonald, FMI Family Advisory Council Member
- Bonnie Bazata, FMI Family Advisory Council Member
- Eric Schindler, FMI Family Advisory Council Member



## About FMI

The Frances McClelland Institute for Children, Youth, and Families at the University of Arizona supports cutting edge, collaborative and innovative research aimed at improving the lives of children, youth and families, especially those from vulnerable and marginalized communities. We actively partner with community organizations, we share research findings with the community, and we educate the next generation of engaged scholars and community leaders. In 2009, the Institute was dedicated to honor the memory and legacy of Frances McClelland. Frances was a business leader and philanthropist. She understood resilience in the lives of children and families.



## In Partnership

Private support is fundamental to the origin and sustainability of the Frances McClelland Institute. We are grateful to all of our donors. We hope you partner with us in our mission to build strong communities that promote family resilience so that children and youth from marginalized backgrounds, have the opportunity to thrive.

Please invest in our work in the Frances McClelland Institute by visiting our website:  
<https://fmi.arizona.edu/donors>

## Upcoming Events

**Thursday, January, 28 2022 from 1:15 PM - 2:30 PM**

Pamela Turbeville Speaker Series with Dr. Gilberto Lopez,  
School of Transborder Studies, Arizona State University

"Challenging the Status Quo: Combining the Arts and  
Social/Health Sciences to Develop Culturally-Tailored  
COVID-19 Information for Latinx"

**Friday, February 18, 2022 from 1:00 PM - 2:15 PM**

Norton School Faculty Data Blitz

**Thursday, March 18, 2022 from 1:15 PM - 2:30 PM**

Pamela Turbeville Speaker Series with Mary Beth Jäger &  
Dr. Lydia Jennings, Indigenous Foods Knowledges  
Network & Native Nations Institute, University of Arizona

"Putting Indigenous Data Sovereignty into Practice: The  
Indigenous Food Knowledges Network"

**Thursday, April 7-8, 2022**

FMI Methods Workshop

**Friday, April 29, 2022 from 12:00 -2:00 PM**

FMI Virtual Student Poster Colloquium



Frances  
McClelland Institute  
Children, Youth, and Families

**Address:**  
PO Box 210078  
Tucson, AZ 85721-0078

**Email:**  
families@cals.arizona.edu

**Phone:** 520.621.4738  
**Fax:** 520.621.4979

**Website:**  
<https://fmi.arizona.edu/>

## FOLLOW US ON SOCIAL MEDIA!

