



ARIZONA AND NEW MEXICO DAIRY NEWSLETTER

COOPERATIVE EXTENSION
The University of Arizona
New Mexico State University

SEPTEMBER, 2002

Meet **Matthew VanBaale**, our new Arizona Dairy Extension Specialist at the Arizona Dairy Production Conference in Tempe, Arizona, October 17, 2002
(Conference details and registration inside)

Read a little about Matt in his own words:

I have been married for about a year and a half to my wife Kristen. She is working on a Masters degree in Food Microbiology in the department of Food Science, Kansas State University (KSU), Manhattan, KS. We are expecting our first child in April and plan to relocate to Tucson in early June, 2003. I began milking cows on a 140 cow dairy (Kupper Bros.) in North Texas in 1991 for \$4 dollars/hour. I milked in a double seven herringbone for almost four years while finishing high school and completing my associates in Farm and Ranch Management from Cooke County College, Gainesville, TX.

In August 1994 I began working on a bachelors degree in animal science at KSU. I worked full time at the KSU Dairy Teaching and Research Unit during school, and was on full academic scholarship. I graduated from KSU in May 1996, and began working full time for Alan Ritchey (AR) Dairy in Yuba, OK. I spent 7 months as night supervisor and then became assistant manager. My primary responsibilities were milking parlor management and milk quality control, along with reproduction. During my 22 months at AR dairy I artificially inseminated and/or pregnancy checked over 40,000 animals and was directly responsible for the shipping of over 4 million pounds of milk. We milked 250 cows per hour through a double 25 with two milkers three times daily and had an actual calving interval of 13.2 months.

In April 1998 Horizon Organic Dairy (HOD) hired me for a 100-day contract to develop

and implement milking parlor procedures and milk quality control protocols. During those 100 days at HOD, production increased from 63 pounds to over 70 pounds of milk/cow/day, simply from developing milking parlor procedures, managing details, and installing an on-farm laboratory for monitoring mastitis. Throughout my M. S. and Ph. D. programs, I spent 30 to 45 days annually at HOD, continually working with management to improve efficiencies and maximize profits. Currently, HOD milks 580 cows per hour through two parlors three times daily.

I began a Masters program in Ruminant Nutrition in August 1998 and graduated in May of 2000. My area of research was the evaluation of dietary interactions of non-effective fiber sources fed to lactating dairy cows. In August of 2000 I began a Ph. D. program in the Food Animal Health and Management Center at the College of Veterinary medicine KSU. My area of research was on-farm HACCP and food safety practices associated with dairy market cows. I will receive my doctorate degree in May 2003, and begin as dairy extension specialist for the University of Arizona in early June.

I am looking forward to getting out on the farm and working closely with dairy producers as I develop an independent research program in the area of dairy cattle biology. I hope to be an advocate for dairy farmers in Arizona and work with them to improve profits.

New Mexico State University Extension Dairy Website:
<http://www/nmsu.edu/~dairy>

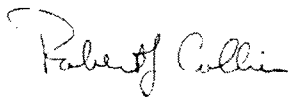
The following videos are available for checkout from New Mexico State University. To obtain a video call Kathy Bustos, (505) 646-3326 or kbustos@nmsu.edu and the video will be sent in the mail, pending availability. There is only one copy of each video available, so we request that videos be returned within two weeks. Note that four of the videos contain an English and Spanish version.

1. The Milking School. Utah State University. Spanish and English. 30 minutes
2. Fitting and Showing Your Dairy Animal....A Winning Experience. Department of Dairy Science, University of Wisconsin. 20 minutes
3. Proper Milking Procedure. University of Florida. Spanish and English. 12 minutes
4. Milking Machine Maintenance. University of Florida. Spanish and English. 16 minutes
5. The Basics of Vacuum and Milking Systems. DHIA Services, 1991. 53 minutes
6. Understanding Dairy Cattle Behavior to Improve Handling and Production. Livestock Conservation Institute, 1992
7. Managing Milking/Ordenar Lecheria. Spanish and English. 1999. 33 minutes
8. Get Milk! Joining A Dairy Crew. University of New Hampshire, 1999. 45 minutes

Need to Calculate Production Costs?

University of Wisconsin dairy farm management specialist, Gary Frank, has developed a Excel spreadsheet to calculate variable cost of production and total cost of production. To access the spreadsheet, go to <http://www.wisc.edu/dairy-profit>, click on Decision Making Tools, then go to costcwt.xls.

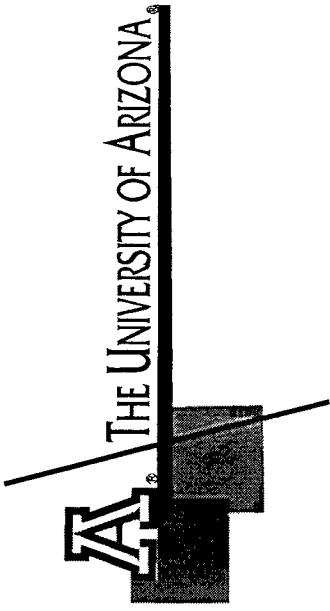
Issued in furtherance of Cooperative Extension on work, acts of May 8 and June 30, 1914, in cooperation with the U.S. Department of agriculture, James A. Christenson, Director, Cooperative Extension, College of Agriculture, The University of Arizona. The University of Arizona College of Agriculture is an Equal Opportunity Employer, authorized to provide research, educational information and other services only to individuals and institutions that function without regard to sex, race, religion, color, national origin, age, Vietnam Era Veteran's status, or disability.



University of Arizona
Department of Animal Sciences
P O Box 210038, Shantz Bldg, Room 205
Tucson, AZ 85721



New Mexico State University
Extension Animal Resources
Box 30003 Dept. 3AE
Las Cruces, NM 88003



**ARIZONA DAIRY
PRODUCTION
CONFERENCE**

ARIZONA COOPERATIVE EXTENSION
U.S. DEPARTMENT OF AGRICULTURE
THE UNIVERSITY OF ARIZONA
TUCSON, ARIZONA 85721

OFFICIAL BUSINESS
PENALTY FOR PRIVATE USE, \$300

**ARIZONA DAIRY
PRODUCTION
CONFERENCE**

Thanks to our
generous sponsors:

Adisseo

Alpharma

Arm & Hammer Animal
Nutrition Group

Bioproducts, Incorporated

Dairy Herd Improvement
Association (DHIA)

Monsanto Dairy Business

Pharmacia Animal Health

University of Arizona
Cooperative Extension

Sheraton Phoenix Airport
Hotel
1600 South 52nd Street
Tempe, Arizona
(480) 967-6600

October 17, 2002

Tel: (520) 621-3375

ARIZONA DAIRY PRODUCTION CONFERENCE

**Master of Ceremonies,
Dennis Armstrong**

**Dairy Extension Specialist and
Research Scientist, Emeritus
Department of Animal Sciences
The University of Arizona**

1:00 Infrared Detection of Thermal Stress in Cattle
Mike Brouk, Kansas State University
Bob Collier, University of Arizona

1:45 Controlled Milk Fat Depression
Lance Baumgard, University of Arizona

2:15 CLA and Milk Fat: A Good News Story
Dale E. Bauman, Cornell University

3:00 Break

3:15 Milk Quality
Bob Peters, University of Maryland

4:00 Adjourn

Registration

Registration fee: \$15.00
Additional proceedings: \$10.00 each
Total enclosed: \$ _____

Name _____
Organization _____
Address _____
Phone _____
Email _____

No part of the registration fee is considered
a tax deductible donation.

If you have a disability for which you seek an accommodation, please notify us prior to the event.

9:00 Registration, Continental Breakfast

9:30 Welcome
Bob Collier, University of Arizona

9:45 Special Needs Facilities
John Smith, Kansas State University

10:30 Effect of polyunsaturated fatty acids and somatotropin on reproduction in cattle
Matt Lucy, University of Missouri

11:15 Use of CIDR's in Dairy Heifers
Jerry Olson, Pharmacia Animal Health

12:00 Lunch
Provided by sponsors



THE UNIVERSITY OF
ARIZONA
COOPERATIVE EXTENSION

Issued in furtherance of Cooperative Extension on work, acts of May 8 and June 30, 1914, in cooperation with the U.S. Department of Agriculture, James A. Christenson, Director, Cooperative Extension, College of Agriculture, The University of Arizona. The University of Arizona College of Agriculture is an Equal Opportunity Employer, authorized to provide research, educational information and other services only to individuals and institutions that function without regard to sex, race, religion, color, national origin, age, Vietnam Era Veteran's status, or disability.

Department of Animal Sciences
PO Box 21008, Sherman Hall
Tucson, AZ 85721-0108

THE UNIVERSITY OF ARIZONA
ARIZONA COOPERATIVE EXTENSION
U.S. DEPARTMENT OF AGRICULTURE
TUCCSON, ARIZONA 85721
Phone: 520-621-3375
Fax: 520-621-9435
Email: arettig@ag.arizona.edu

HIGH COW REPORT AUGUST, 2002

MILK

Arizona Owner	Barn #	Age	Milk	New Mexico Owner	Barn #	Age	Milk
* Stotz Dairy West	12131	4-10	39,140	Ken Miller Dairy	506	5-11	39,637
* Mike Pylman Dairy	4580	4-8	38,690	* Do-Rene Dairy	500	5-06	39,280
* Mike Pylman Dairy	5072	4-0	37,830	S.A.S. Dairy	2246	6-05	39,116
* Stotz Dairy west	11978	4-11	37,710	* Do-Rene Dairy	678	5-06	38,090
* Stotz Dairy West	12852	4-3	37,530	S.A.S. Dairy	1283	6-01	37,400
* Stotz Dairy West	12725	4-6	37,510	S.A.S. Dairy	1290	6-01	36,607
* Mike Pylman Dairy	4753	4-4	37,390	* Hafliger Dairy	6084	5-06	36,030
* Stotz Dairy West	5655	8-0	37,190	* Hafliger Dairy	6749	4-03	36,020
Martha Linda Dairy	782	3-1	36,567	Ken Miller Dairy	732	3-10	35,714
* Stotz Dairy West	11925	4-11	35,320	* Do-Rene Dairy	1876	6-06	35,640

FAT

* Mike Pylman Dairy	3008	6-4	1605	* Hafliger Dairy	337	6-06	1528
* Mike Pylman Dairy	2876	6-11	1478	New Direction Dairy	624	5-10	1491
* Stotz Dairy West	8316	3-11	1470	Ken Miller Dairy	506	5-11	1462
* Mike Pylman Dairy	5517	3-5	1468	Price' Roswell Farm	787	6-06	1442
* Mike Pylman Dairy	5389	3-8	1467	* Hafliger Dairy	6084	5-06	1388
* Stotz Dairy West	12131	4-10	1410	S.A.S. Dairy	3165	5-02	1366
* Del Rio Dairy	3088	6-5	1409	S.A.S. Dairy	1290	6-01	1348
* Mike Pylman Dairy	5101	3-11	1391	McCatharn Dairy	3093	5-11	1345
* Arizona Dairy North	1502	4-4	1380	S.A.S. Dairy	1283	6-01	1337
Martha Linda Dairy	782	3-1	1371	Price's Roswell Farm	1704	5-05	1331

PROTEIN

* Mike Pylman Dairy	3691	5-0	1167	New Direction Dairy	2113	4-01	2192
* Mike Pylman Dairy	3008	6-4	1122	New Direction Dairy	1212	3-00	1778
* Stotz Dairy West	12131	4-10	1120	New Direction Dairy	1209	3-00	1696
* Stotz Dairy West	12725	4-6	1107	S.A.S. Dairy	2246	6-05	1274
* Mike Pylman Dairy	2876	6-11	1088	New Direction Dairy	6842	3-11	1261
* Mike Pylman Dairy	4580	4-8	1078	New Direction Dairy	618	4-08	1257
* Mike Pylman Dairy	4753	4-4	1078	Ken Miller Dairy	506	5-11	1237
* Mike Pylman Dairy	5517	3-5	1074	New Direction Dairy	44	7-01	1184
* Mike Pylman Dairy	3529	5-1	1068	* Do-Rene Dairy	500	5-06	1151
* Stotz Dairy West	12852	4-3	1066	Ken Miller Dairy	741	3-09	1104

* 3X milking

ARIZONA – TOP 50% FOR F.C.M. ^b

AUGUST, 2002

OWNERS NAME	Number of Cows	MILK	FAT	3.5 FCM	D.I.M.
* Stotz Dairy	2120	27,822	981	27,939	221
* Red River Dairy	4053	27,615	984	27,899	201
University of Arizona Holsteins	170	26,244	949	26,739	206
Martha Linda Dairy	1855	25,609	928	26,123	195
* Mike Pylman Dairy	2712	25,200	894	25,394	212
* Stotz Dairy East	1372	25,050	867	24,891	227
University of Arizona Brown Swiss	118	22,656	896	24,328	199
* Arizona Dairy North	2655	24,190	852	24,278	207
* Hillcrest Dairy	2393	24,698	845	24,161	205
Paul Rovey Dairy	434	24,149	846	24,161	198
Desert Ridge Dairy LLC2	498	24,124	848	24,160	192
DC Dairy, LLC	1074	23,248	852	23,870	212
* Arizona Dairy South	3230	24,028	829	23,835	201
* Zimmerman Dairy	1257	23,173	830	23,480	226
* Wigwam Dairy	1511	23,002	831	23,423	220
* Del Rio Holsteins	1234	23,461	835	23,687	177
Butler Dairy	624	23,314	814	23,281	201
* Saddle Mountain Dairy	2203	23,348	769	22,565	204
* Dutch View Dairy	1711	22,457	778	22,327	223
* Danzeisen Dairy, LLC	1238	21,244	780	21,836	196
* Dairyland Milk Company	2525	21,539	746	21,411	200
* Del Rio Brown Swiss	160	20,940	772	21,574	156
Gladtime West Holsteins	341	21,847	744	21,513	219
* R.G. Dairy, LLC	1338	21,539	746	21,411	200
* Goldman Dairy	2063	21,193	749	21,310	199

TOP 50% ACTUAL MILK – OFFICIAL & UNOFFICIAL HERDS FOR NEW MEXICO

OWNERS NAME	Number of Cows	MILK	FAT	3.5 FCM	D.I.M.
* Hide Away Dairy	2194	26,767	900	26,170	184
* Pareo Dairy #1	1386	26,205	931	26,430	201
McCatharn North Dairy	1069	25,087	862	24,828	184
Ken Miller Dairy	369	24,598	822	23,967	208
* Hafliger Dairy	1750	24,592	896	25,165	201
* Do-Rene Dairy	2759	24,428	840	24,186	185
* Tallmon Dairy	538	24,048	858	24,313	211
Pareo Dairy #2	2815	24,047	892	24,864	190
S.A.S. Dairy	2044	23,818	854	24,149	186
Price's Roswell Farm	2809	23,271	837	23,637	194
* Vaz Dairy	1551	22,900	790	22,714	212
* High Plains Dairy	1730	22,419	835	23,236	216
Goff Dairy	4309	22,296	804	22,680	211
Breedyk Dairy	2815	22,123	723	21,292	187

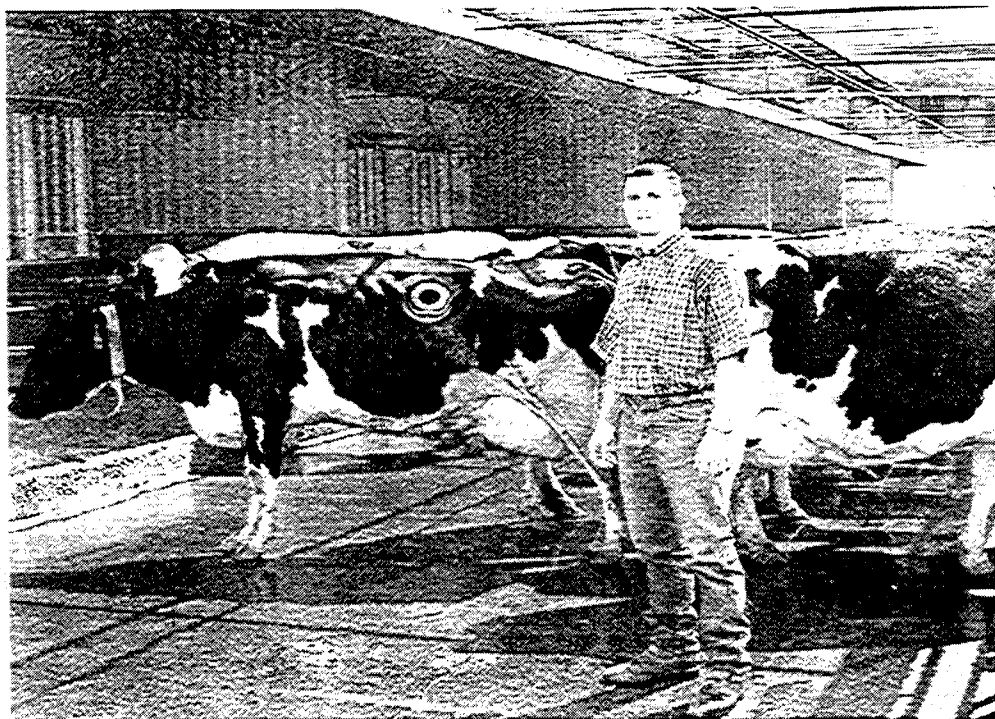
* 3X a day milking

^b average milk and fat figure may be different from monthly herd summary; figures used are last day/month

**ARIZONA AND NEW MEXICO HERD IMPROVEMENT SUMMARY
FOR OFFICIAL HERDS TESTED AUGUST, 2002**

		ARIZONA	NEW MEXICO
1.	Number of herds	48	28
2.	Total cows in herd	82,552	47,528
3.	Average herd size	1720	1697
4.	Percent days in milk	86	86
5.	Average days in milk	214	197
6.	Average milk – all cows per day	56.2	59.7
7.	Average percent fat – all cows	3.6	3.4
8.	Total cows in milk	70,994	41,204
9.	Average daily milk for milking cows	65.1	69.0
10.	Average days in milk – 1 st breeding	84	73
11.	Average days open	159	147
12.	Average calving interval	13.9	13.9
13.	Percent somatic cell – linear 0-4	84	81
14.	Percent somatic cell – linear 5-6	8	13
15.	Percent somatic cell – linear 7 & above	8	5
16.	Average previous days dry	63	69
17.	Percent cows leaving herd	32	35.9
		STATE AVERAGE	
	MILK	21,959	22,069
	Percent butterfat	3.6	3.6
	Percent Protein	3.0	3.0
	Pounds fat	799	786
	Pounds protein	659	653

Matt VanBaale at Kansas State University Dairy



ARIZONA COOPERATIVE EXTENSION
U.S. DEPARTMENT OF AGRICULTURE
The University of Arizona
Tucson, Arizona 85721

OFFICIAL BUSINESS
PENALTY FOR PRIVATE USE, \$300

PRESRT STD
POSTAGE & FEES PAID
USDA
PERMIT NO G-268



THE UNIVERSITY OF
ARIZONA®

COOPERATIVE EXTENSION

Department of Animal Sciences

P O Box 21 0038

Tucson, AZ 85721 -0038

Phone: 520-621 -3375

Fax: 520-621 -9435

Email: arettig@ag.arizona.edu

Mark your calendar
THIS MONTH

- **Arizona Dairy Production Conference**
October 17, 2002

FUTURE

- **Southwest Nutrition and Management Conference, February 20-21, 2003**
- **Arizona Dairy Day, March 7, 2003**