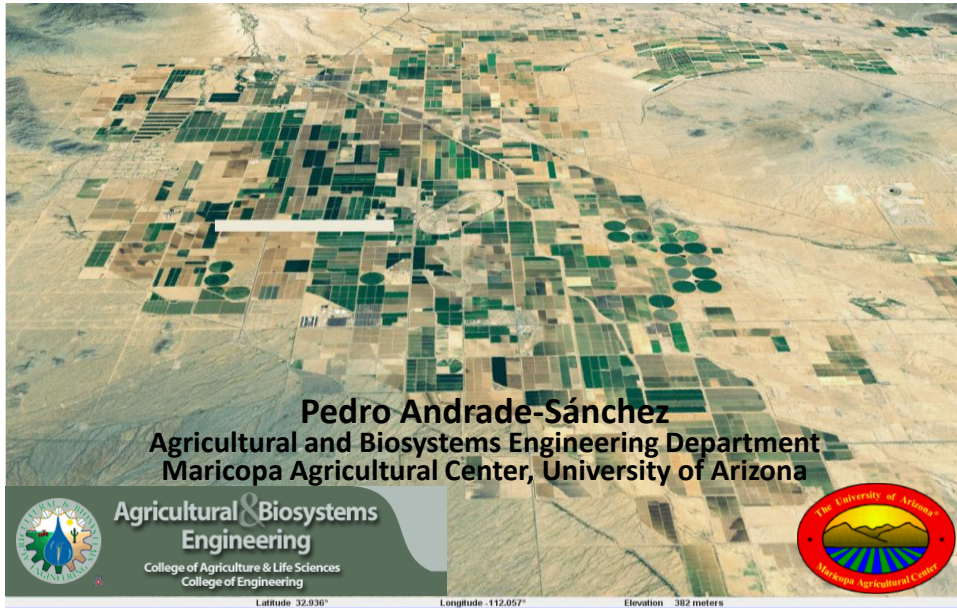


Using Yield Monitor Data for Management Decisions



Systems commercially available

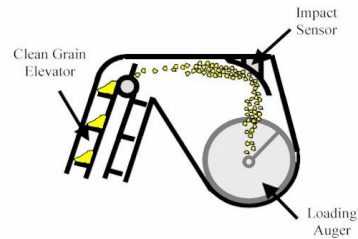
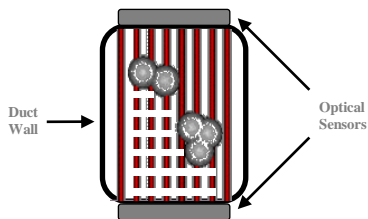
Generic Systems (i.e. AgLeader)

- Installation kits available for most brands and models of harvest equipment
- Stand-alone systems. Need additional display (on-board computer), GPS, and other hardware (i.e header sensor, fan velocity sensor).



Generic Systems (i.e. AgLeader)

- Cotton - Optical sensors are installed in the chutes in two or four configurations.
- Grains – One mass sensor plate is installed at the top in the elevator conveyer

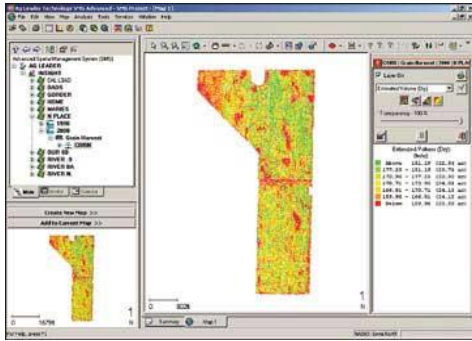


Integrated Systems (i.e. John Deere and Case IH)

- CAN Bus connection
- John Deere Harvest-Doc is an optional feature. Need GreenStar-ready machines and additional display, sensors, controller and GPS.
- Case IH is standard equipment. Need additional GPS



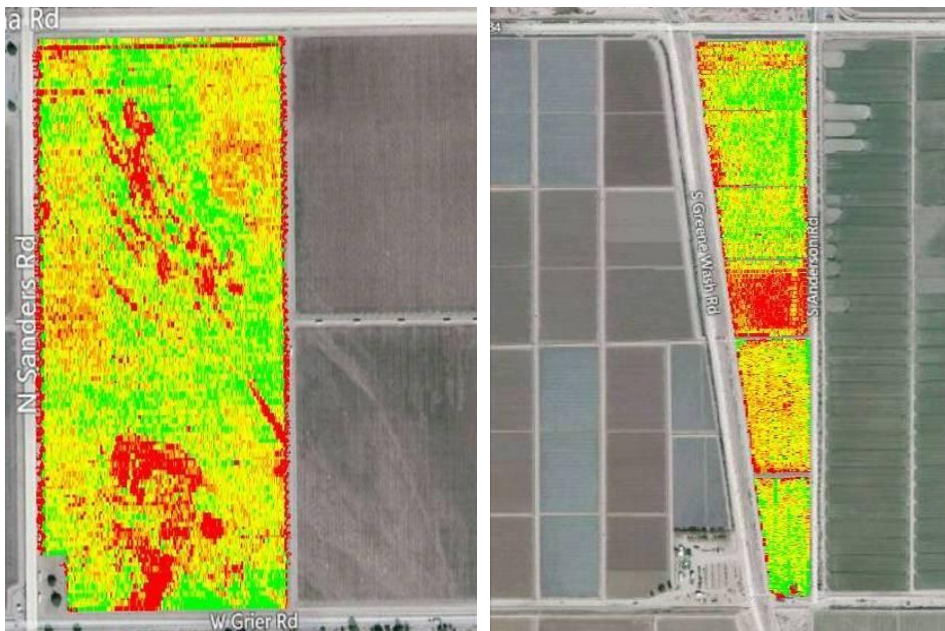
THE UNIVERSITY OF ARIZONA Software – Visualizing yield data



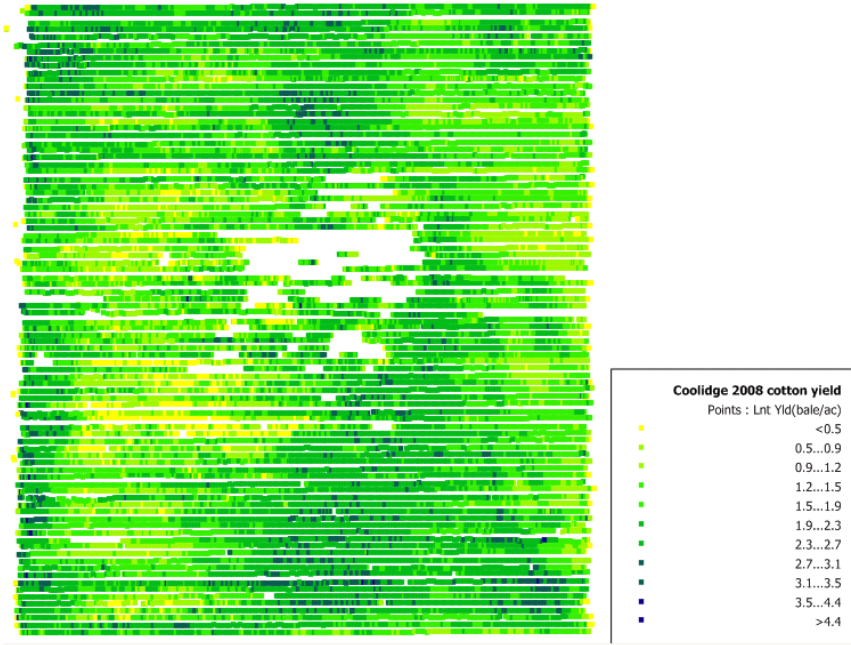
THE UNIVERSITY OF ARIZONA. **Yield visual inspection**



THE UNIVERSITY OF ARIZONA. **Yield visual inspection**

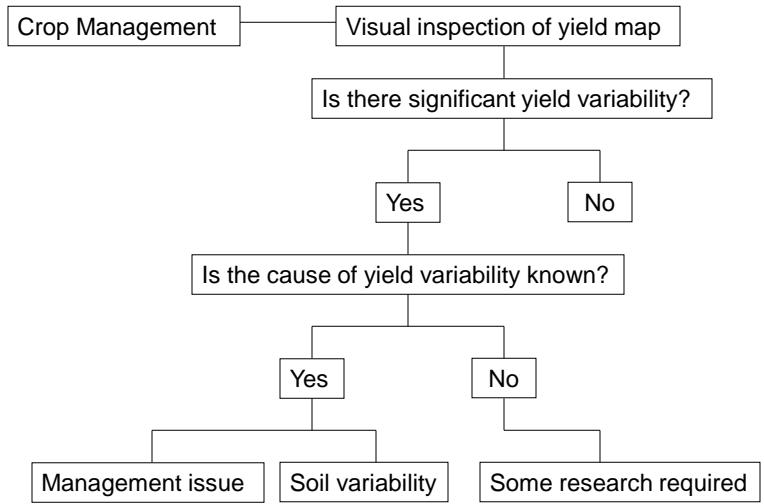


 THE UNIVERSITY OF ARIZONA. **Yield visual inspection**

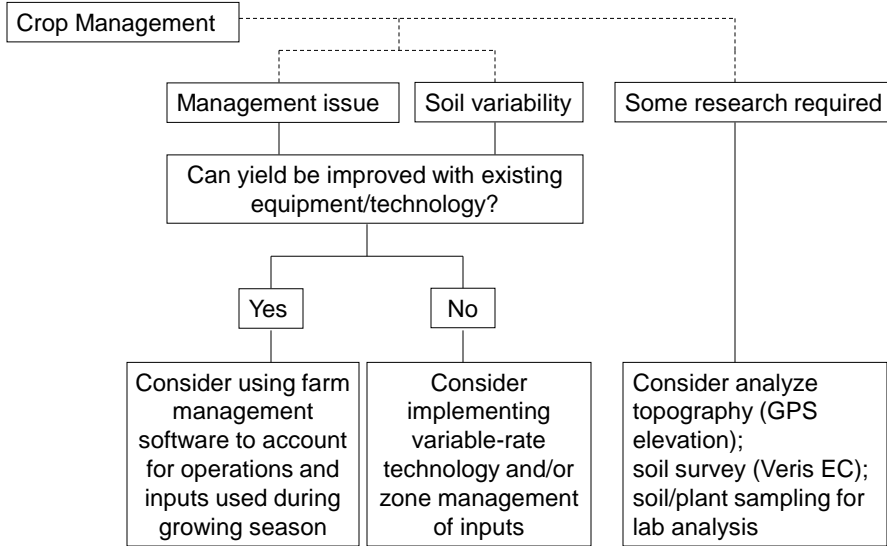


 THE UNIVERSITY OF ARIZONA. **Yield data analysis**

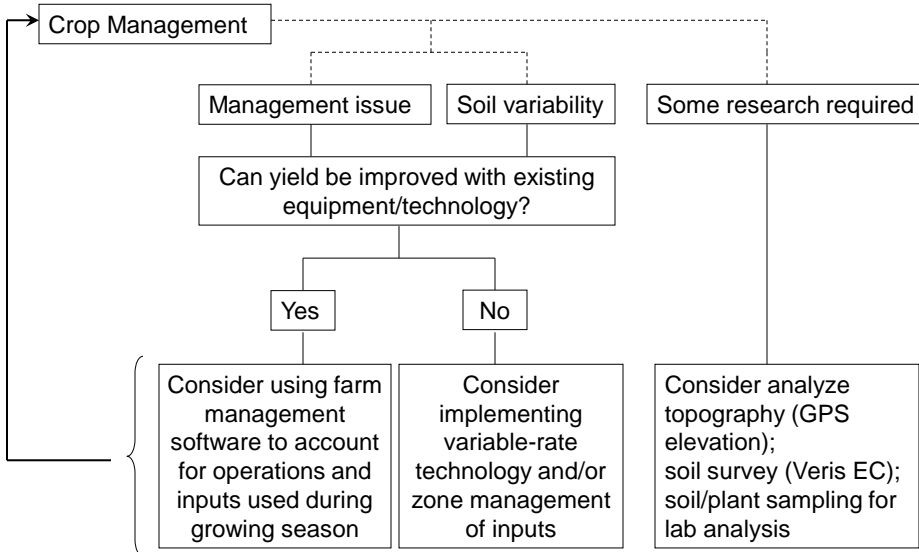
Growers know their fields better than anybody else



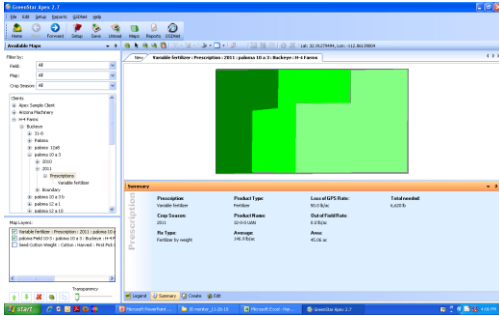
Growers know their fields better than anybody else



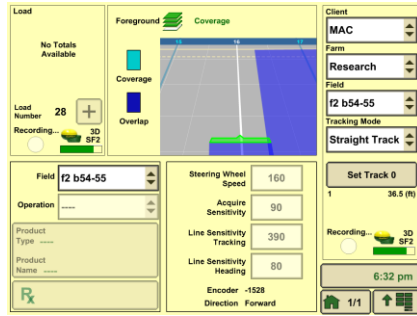
Growers know their fields better than anybody else



THE UNIVERSITY OF ARIZONA. Generating/loading prescription files



Personal computer



Monitor in sprayer/tractor cab

THE UNIVERSITY OF ARIZONA. Using prescription files – Variable-rate technology



VRT Side-dressing liquid fertilizer



Rawson controller

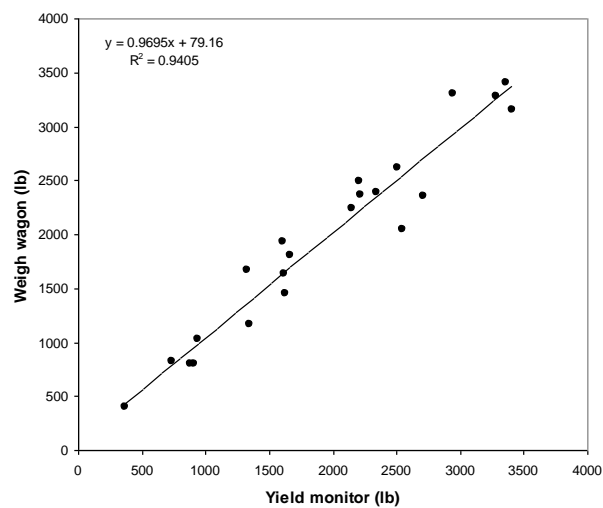


VRT Top-dressing liquid fertilizer



Raven controller

- Use of boll buggy instrumented with load sensors. Whole load calibration





Mr. Ismael Cervantes
Maricopa
(Ag-Leader Insight)



Mr. Antonio Garcia
Buckeye
(John Deere GS2)



Mr. Abel Hernandez
Marana
(Case-IH AFS-600)

- Yield monitoring is more than creating maps – **is a management tool!**
- Any system can achieve excellent performance
 - machine set-up and calibration
 - operator training
- Consult with your machinery dealer for options in GPS-based technology
- The precision ag. program at UA is one resource. Feel free to contact us:

Pedro Andrade 520 483 9693 pandrade@ag.arizona.edu