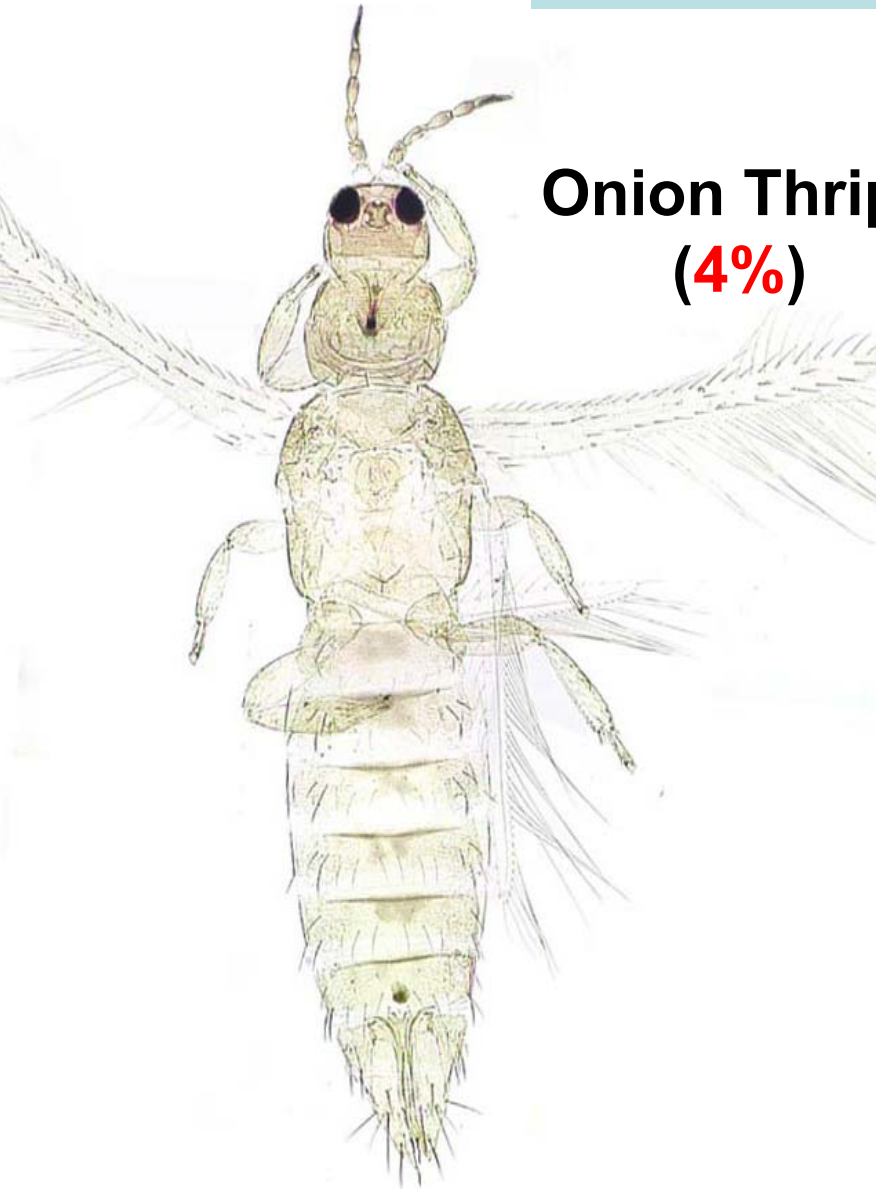


Thrips Ecology and Management in Lettuce

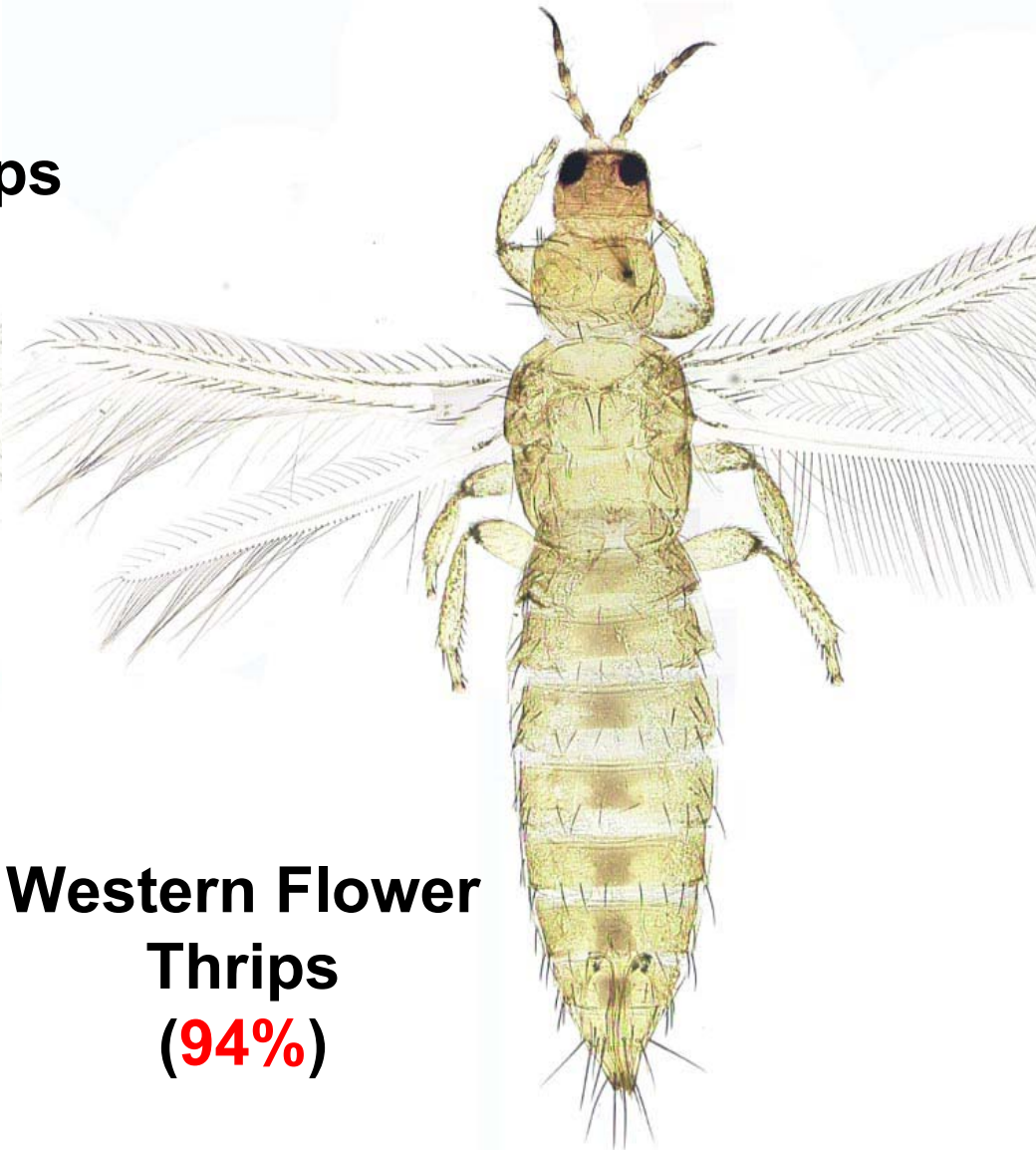
Objectives

- Population Dynamics
- Sampling
- Damage
- Control

Population Dynamics



Onion Thrips
(4%)



**Western Flower
Thrips**
(94%)

Bean Thrips



Greenhouse thrips



***Chirothrips* spp.**

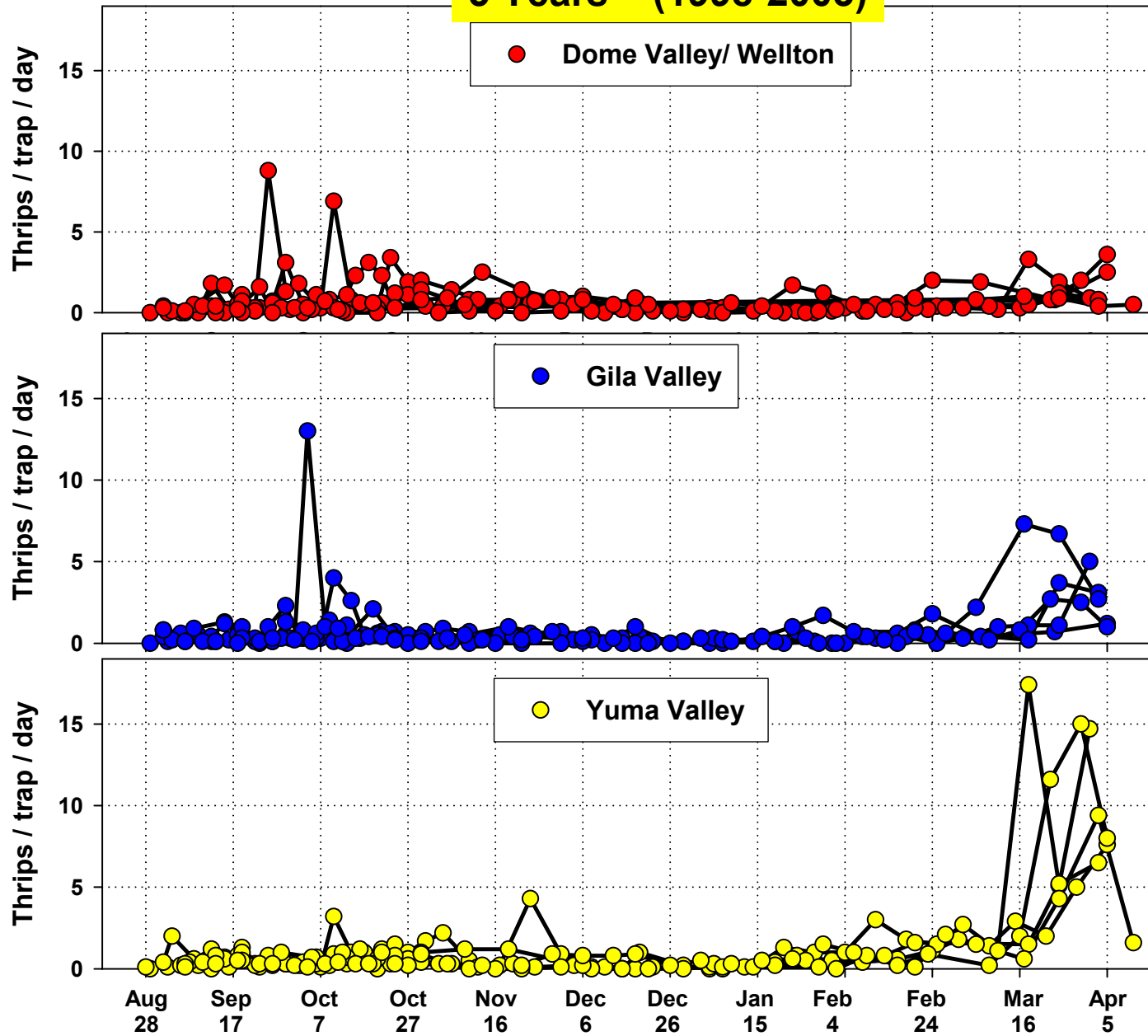


Six-spotted thrips

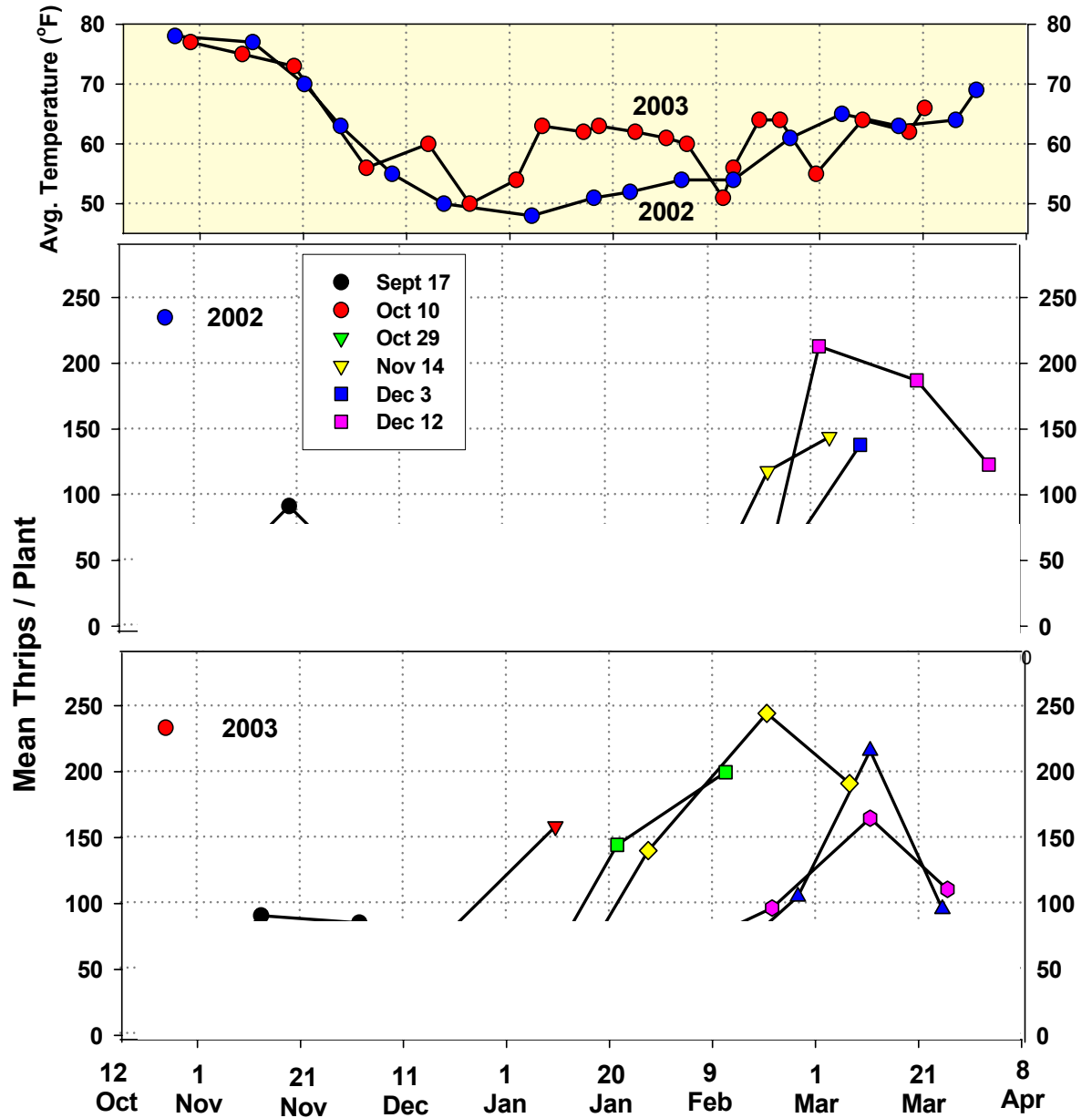




5 Years (1998-2003)



Thrips in Head Lettuce - Planting Dates 2002-2003



Thrips Sampling



Absolute Sampling

Counting all thrips with a
Plant Wash technique











CONTENTS B (S-8)
DATE



Beat Pan

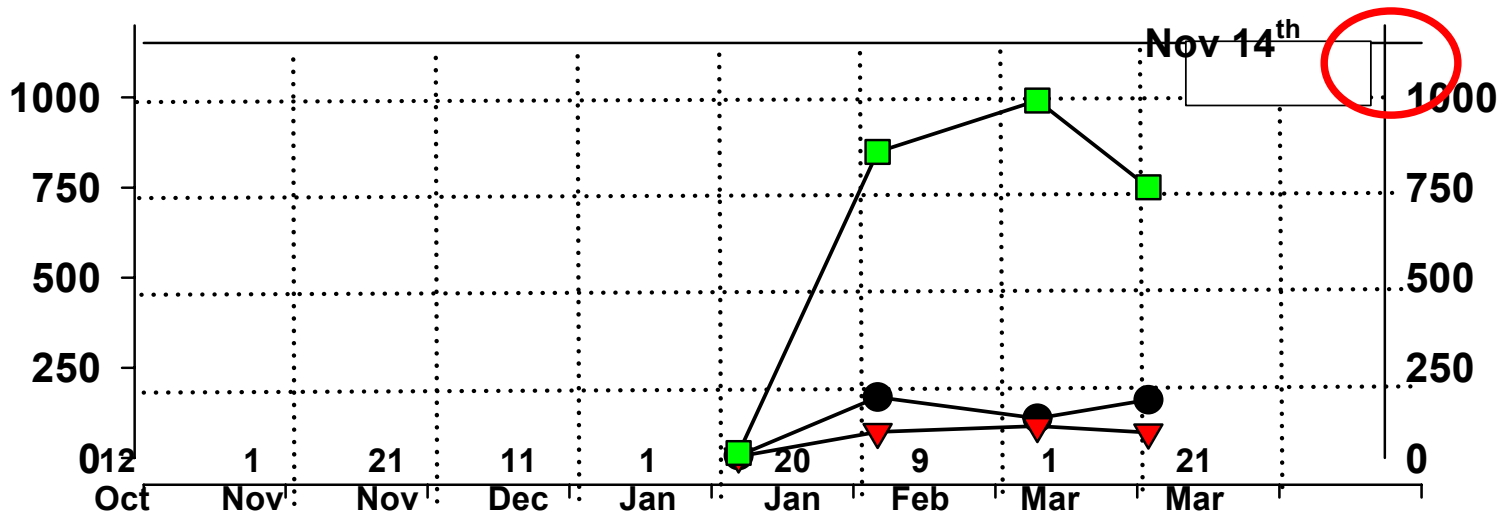
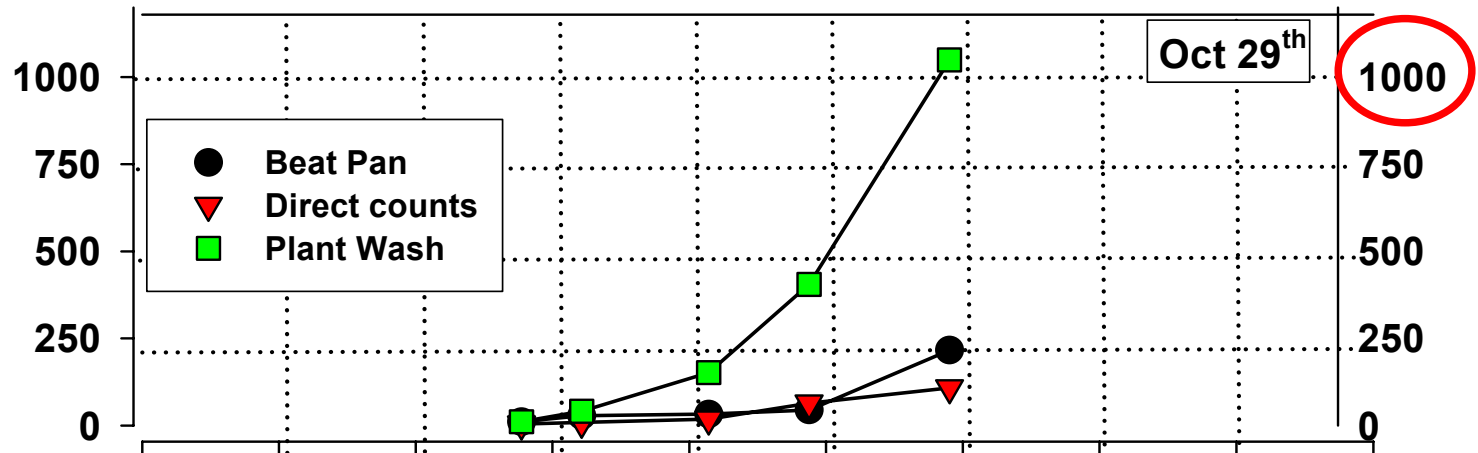




Direct Visual Counts

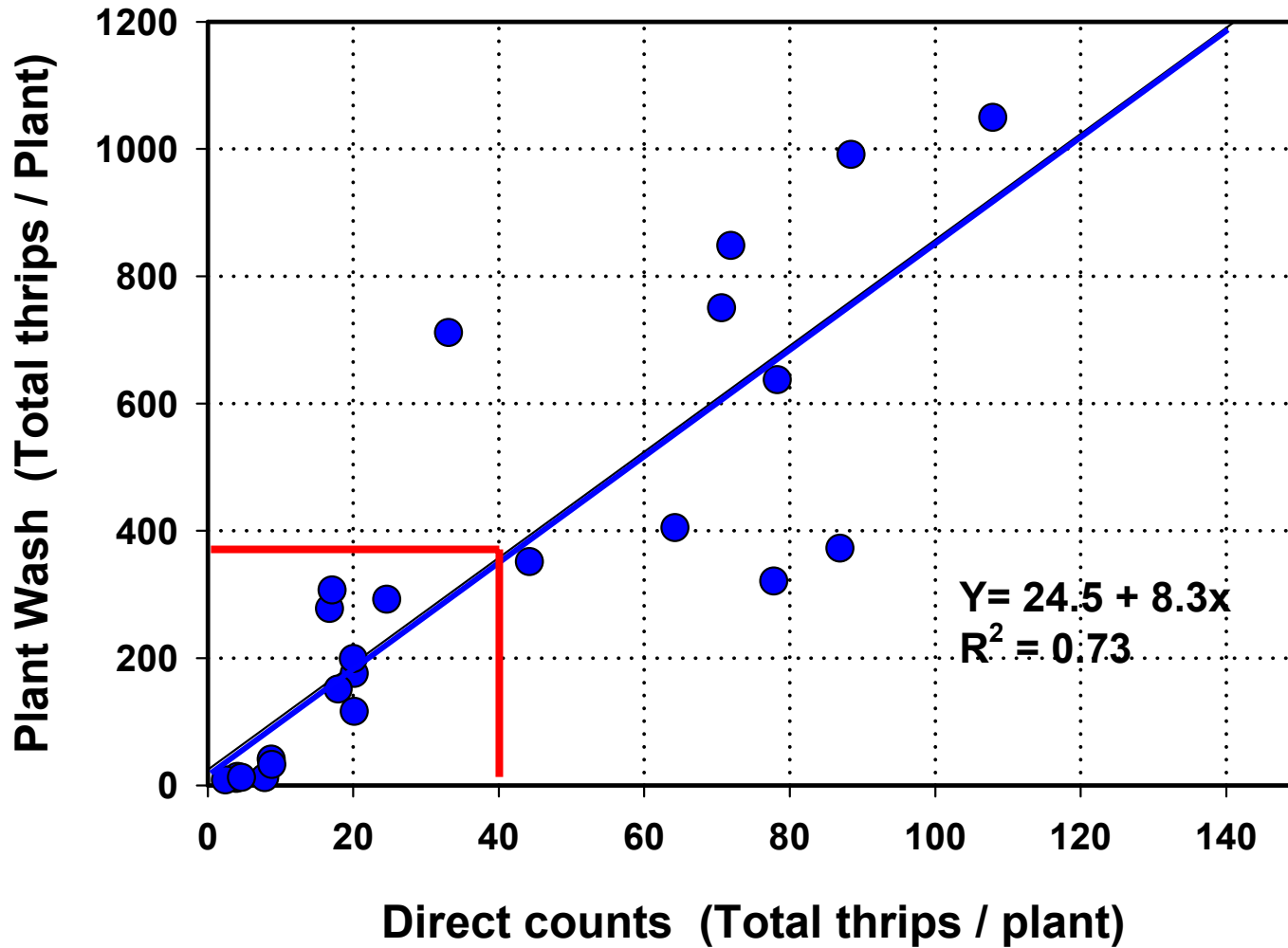


Population Dynamics of Thrips in Head Lettuce 2003



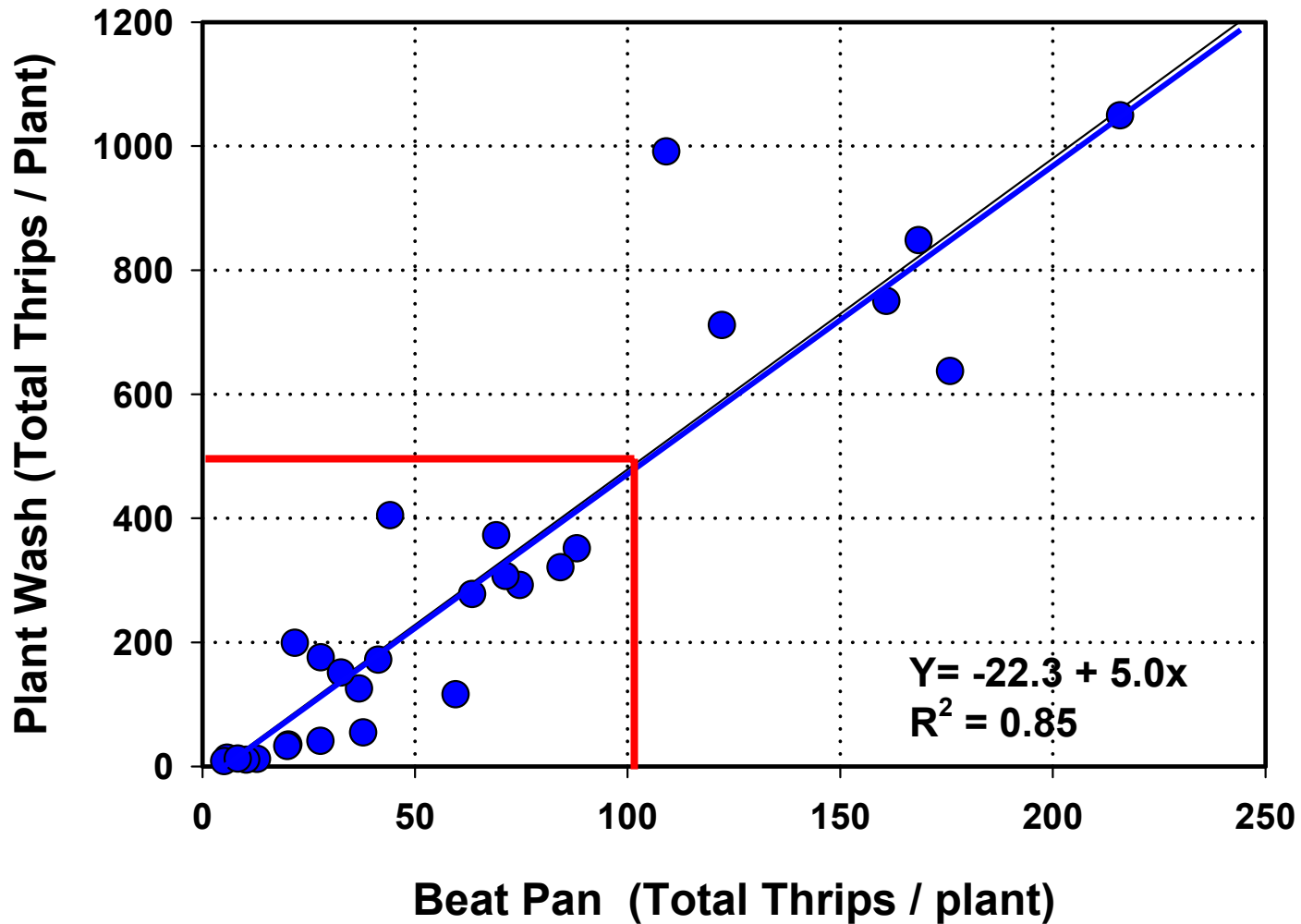
Direct Visual Counts (n=27)

~ 12 % of what was actually on plant



Beat Pan Counts (n=27)

~ 20 % of what was actually on plant



Thrips Damage ?

