

Winged (alatae) Aphids on Desert Lettuce

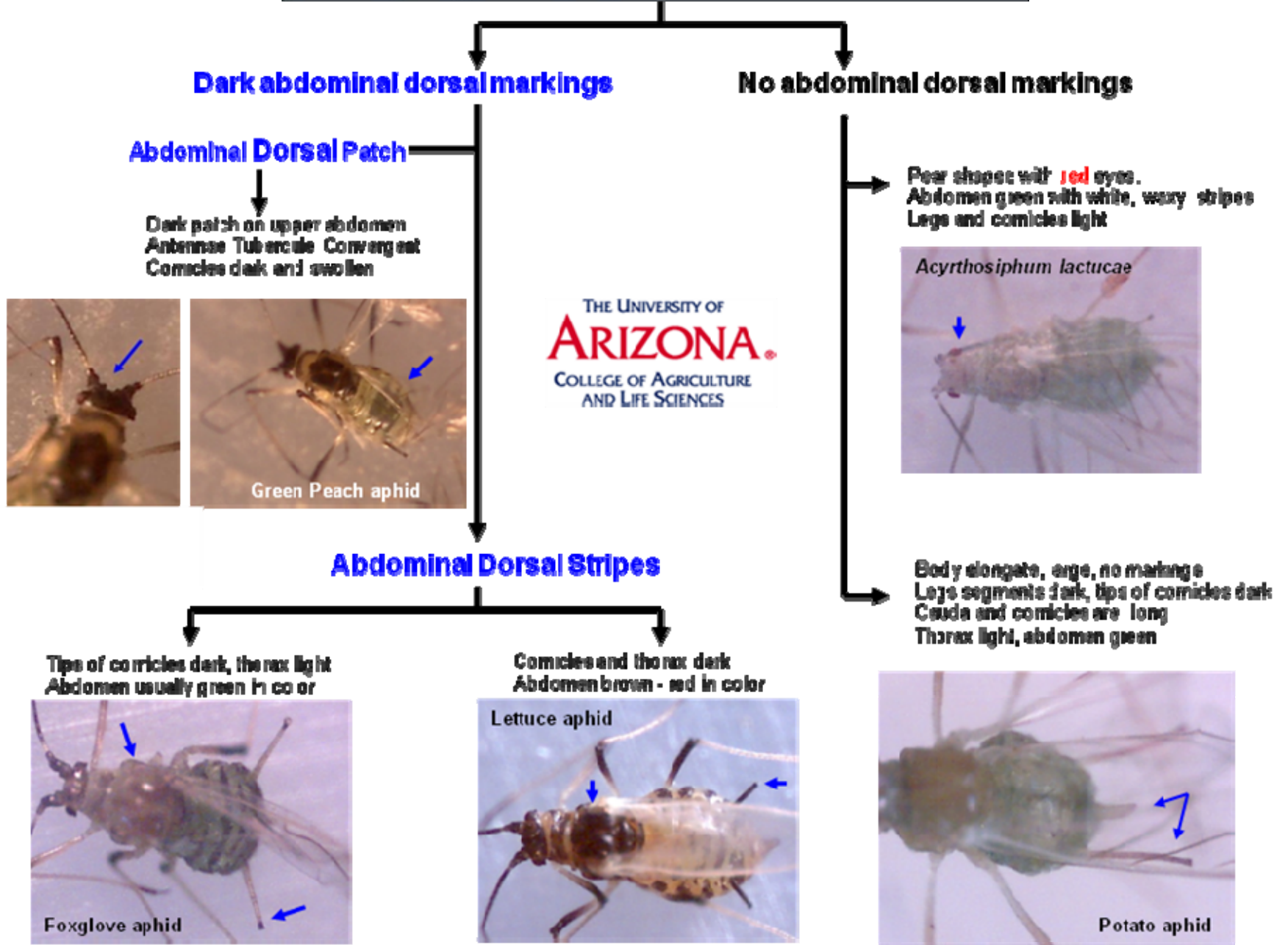


Plate 1. Pictorial Key for the Five major aphid species found in lettuce (alate forms)

Wingless (apterous) Aphids on Desert Lettuce

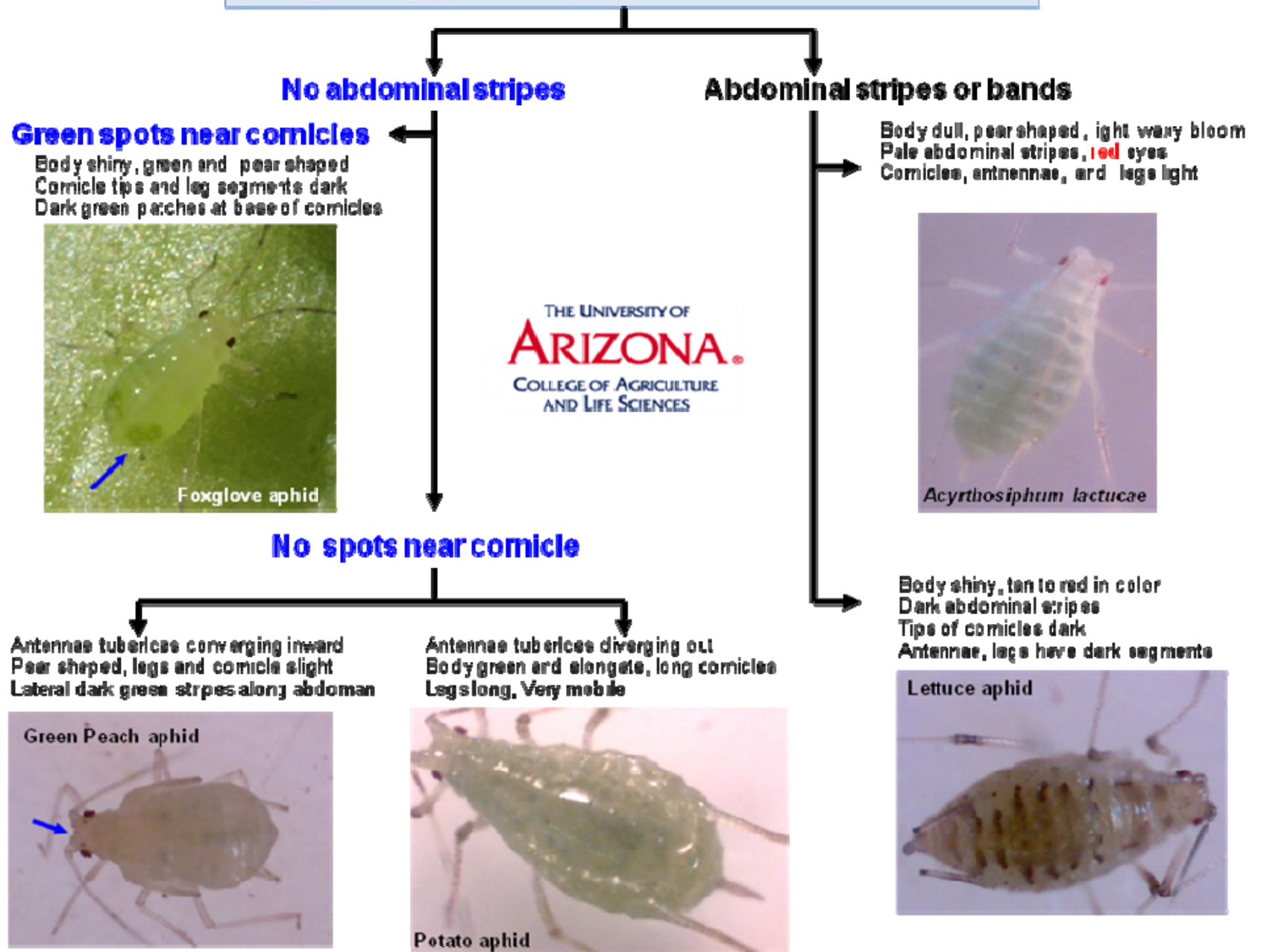


Plate 2. Pictorial Key for the Five major aphid species found in lettuce (apterous forms)



Plate 3. A) Green Peach Aphid (GPA) mature alate and immatures on lettuce, B) GPA apterous nymphs on lettuce on broccoli, C) GPA alate; note the converging antennal tubercles and dark patch on abdomen, D) GPA apterous form; note the converging antennal tubercles
J.C. Palumbo – 2010

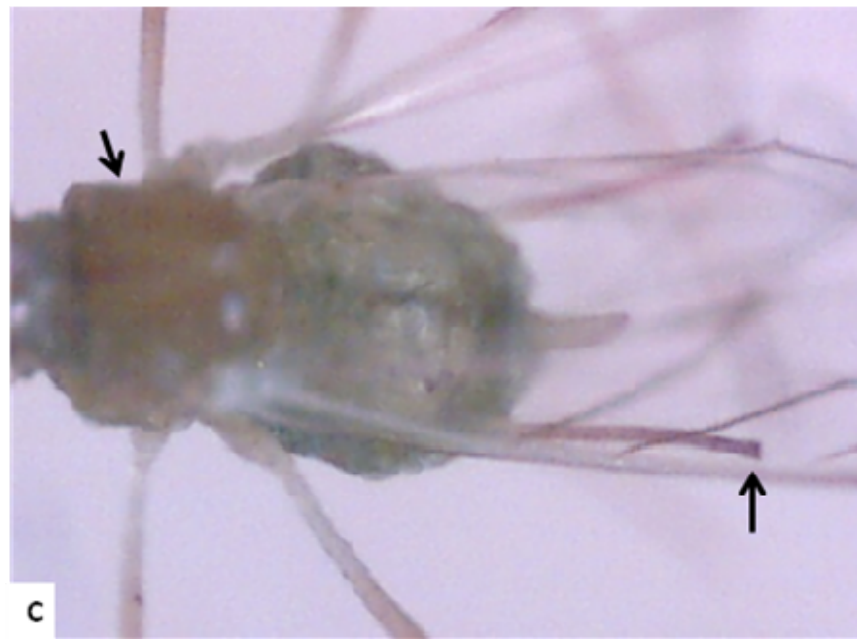


Plate 4. A) Potato Aphid (PA) mature alate, B) Mature PA apterous nymph, C) PA Alate; note the light thorax and long cornicles, D) PA apterous form; note the long cornicles and cauda terous;
J.C. Palumbo – 2010



Plate 5. A) Foxglove Aphid (FGA) mature alate, B) Mature FGA apterous nymph, C) FGA Alate; note the light thorax and dark tips on cornicles, D) FGA apterous form; note dark patches at base of cornicles
J.C. Palumbo – 2010

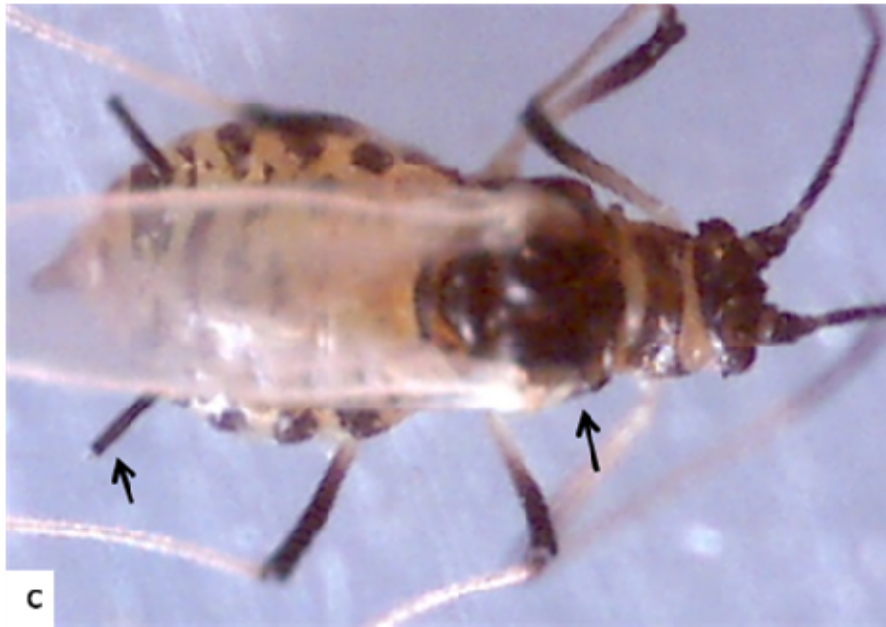


Plate 6. A) Lettuce Aphid (FGA) mature alate, B) Mature LA apterous nymph, C) LA Alate; note the dark thorax and cornicles, D) FGA apterous immature forms; J.C. Palumbo – 2010



Plate 7. A) GPA colonizing spinach leaf , B) FGA apterous form on celery stalk, C) FGA and GPA on celery leaf, D) Melon aphid apterous forms on celery leaf
J.C. Palumbo – 2010



Plate 8. A) Cabbage aphids apterous forms on seed pods of broccoli seed crop, B) Damage to broccoli seed crops by cabbage aphid, C) Turnip aphid apterous forms on cauliflower leaf, D) Turnip Aphid colonizing cauliflower plant

J.C. Palumbo – 2010