

Areawide Insect Trapping Network

The project is designed to measure the activity and movement of adult populations of a number of key pests. The project is being funded by the *Arizona Iceberg Lettuce Research Council*, and will hopefully provide an indication of when pest activity (e.g., corn earworm moth flights) is increasing based on pheromone / sticky trap captures.

The data is not intended to indicate field infestations, as trap data is largely a reflection of adult movement. If nothing else, the data may make PCAs aware of increased pest activity in some areas and encourage intensified scouting in susceptible produce fields.

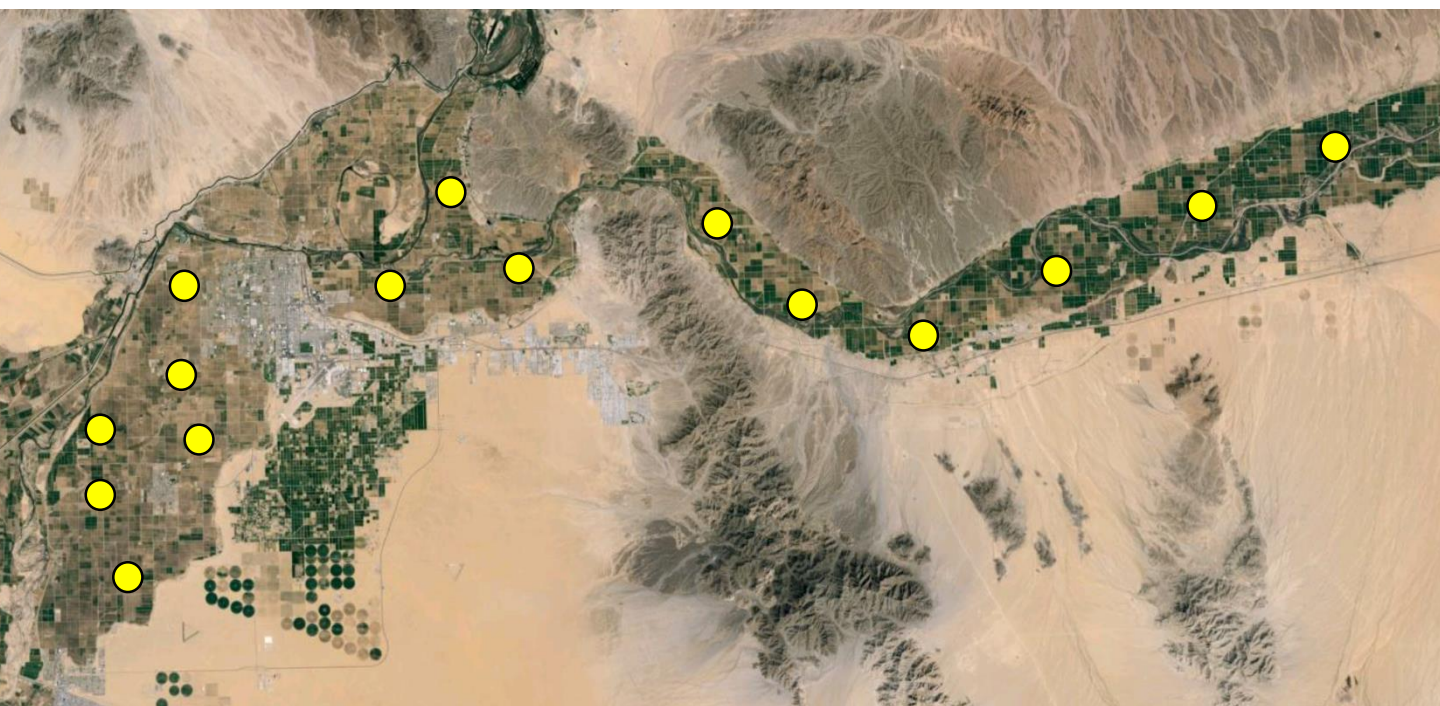
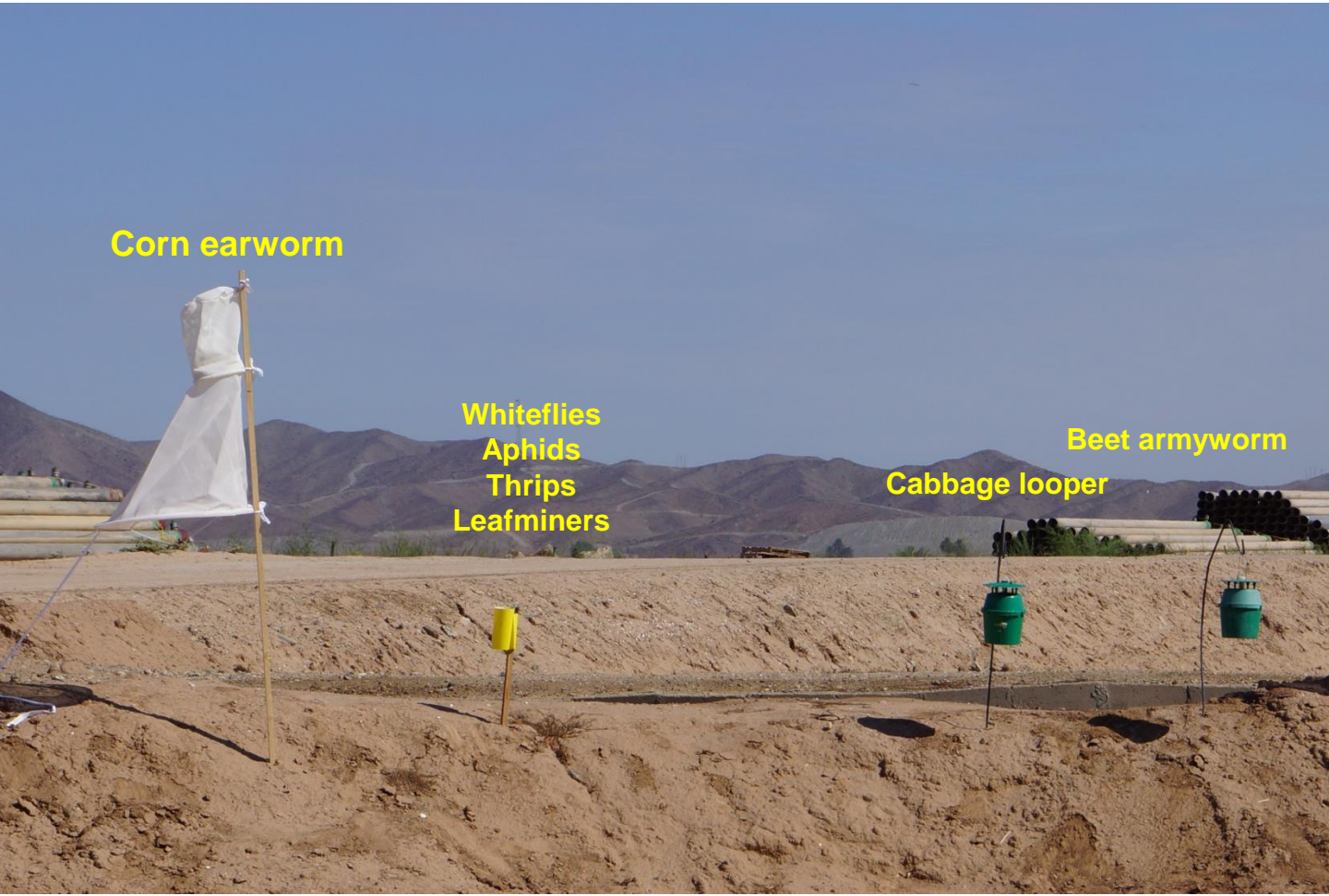
The pests being monitored include: corn earworm, beet armyworm, cabbage looper using pheromone traps; aphids, thrips, leafminers and whiteflies using yellow sticky traps. Traps are checked weekly and data is available in the bi-weekly Veg IPM updates. If a PCA or grower is interested in weekly counts, those can be made available by contacting us. A total of 15 trapping locations have been established in the following areas (approximate location):

Trap Locations

1	Tacna/Texas Hill	47E and Co. 2 St.
2	Tacna/Roll	38E and Co. 4 St.
3	Roll/Wellton	33E and Co. 7 St.
4	Wellton	27E and Co. 10 St.
5	Dome Valley	21E and Co. 8 St.
6	Dome Valley	17E and Co. 6 St.
7	East Gila Valley	10E and Hwy 95
8	North Gila Valley	Laguna Dam Rd and Co. 3 St
9	South Gila Valley	5E and 24th St.
10	Yuma Valley	Co. 14 and Ave D
11	Yuma Valley	Co. 19 and Ave G
12	Yuma Valley	Co. 22 and Ave I
13	Yuma Valley	Co. 17 and Ave J
14	Yuma Valley	Co. 12 and Ave F
15	Yuma Valley	Co. 8 and Ave E

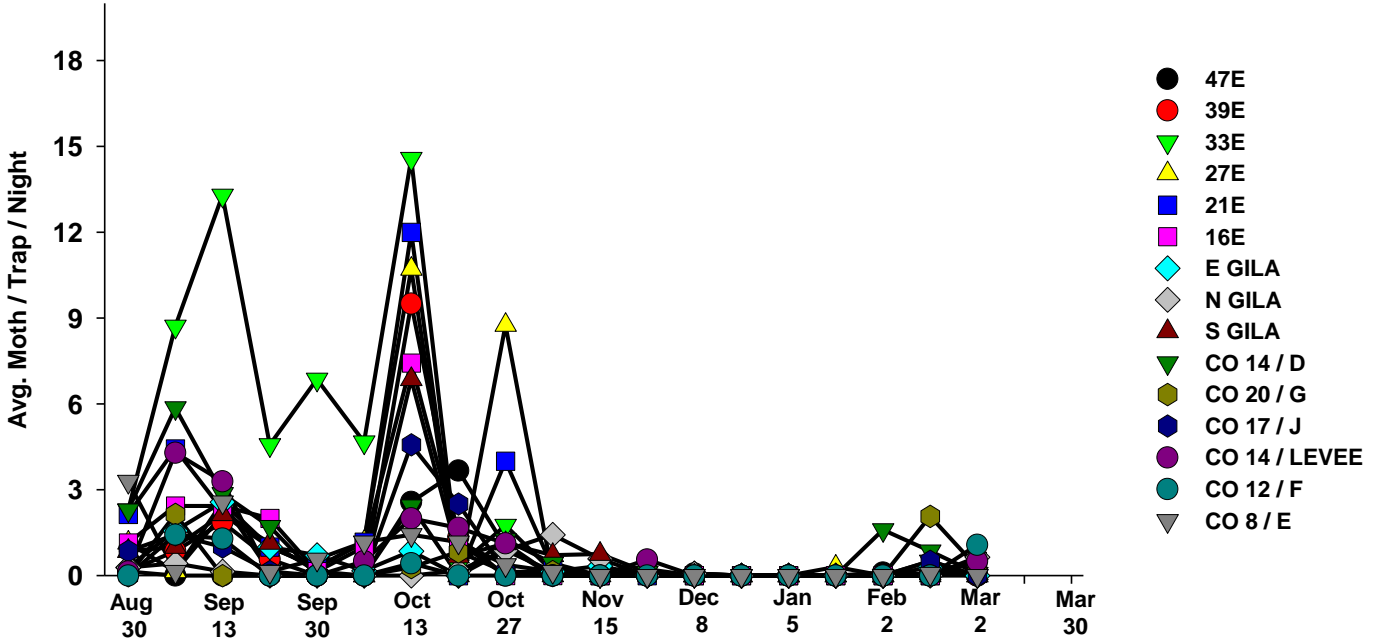
Area-wide Insect Trapping Network

North Gila Valley



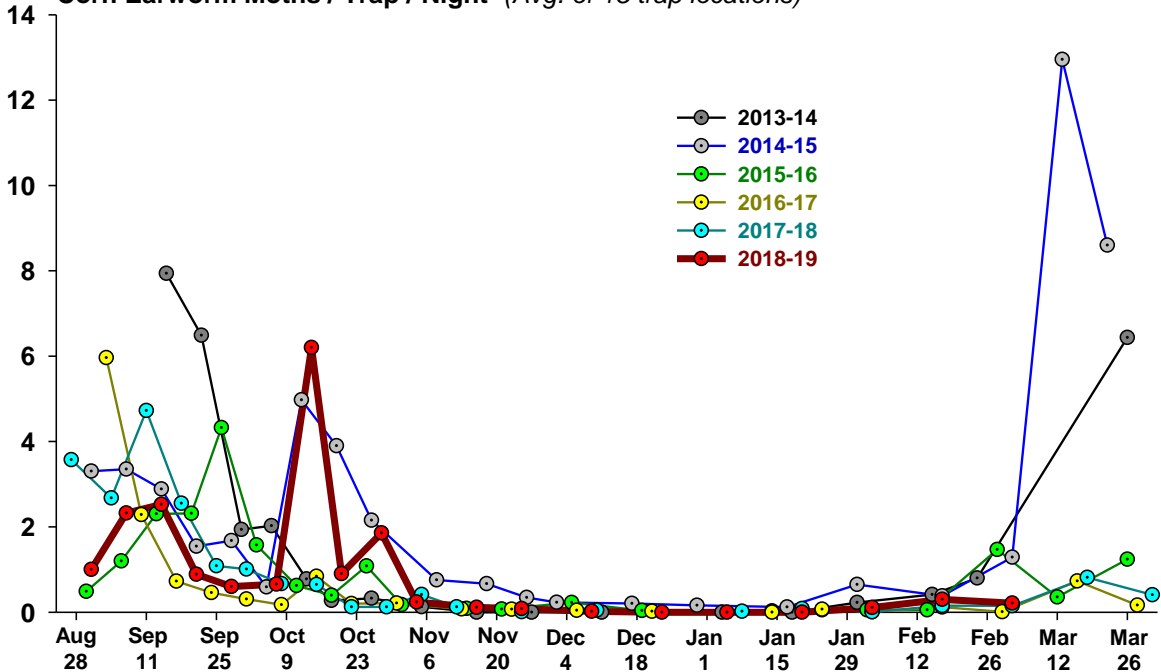
Corn Earworm

2018-19



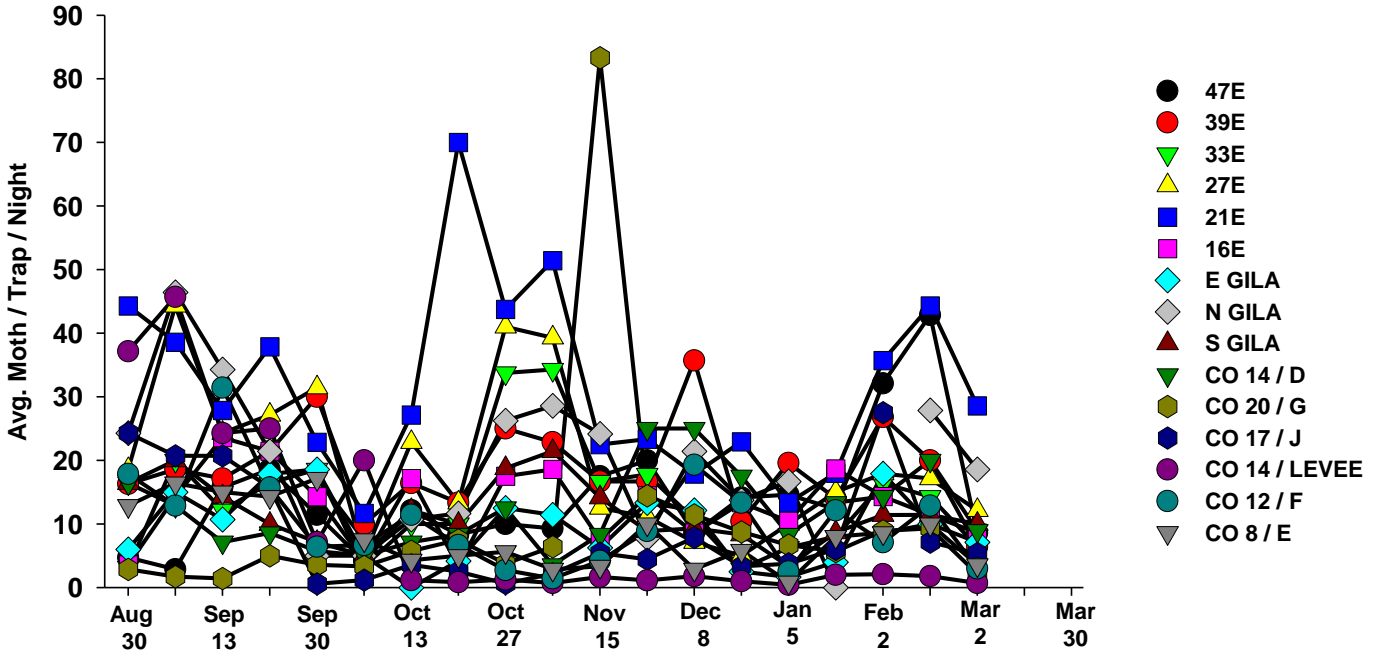
6 Year Average

Corn Earworm Moths / Trap / Night (Avg. of 15 trap locations)



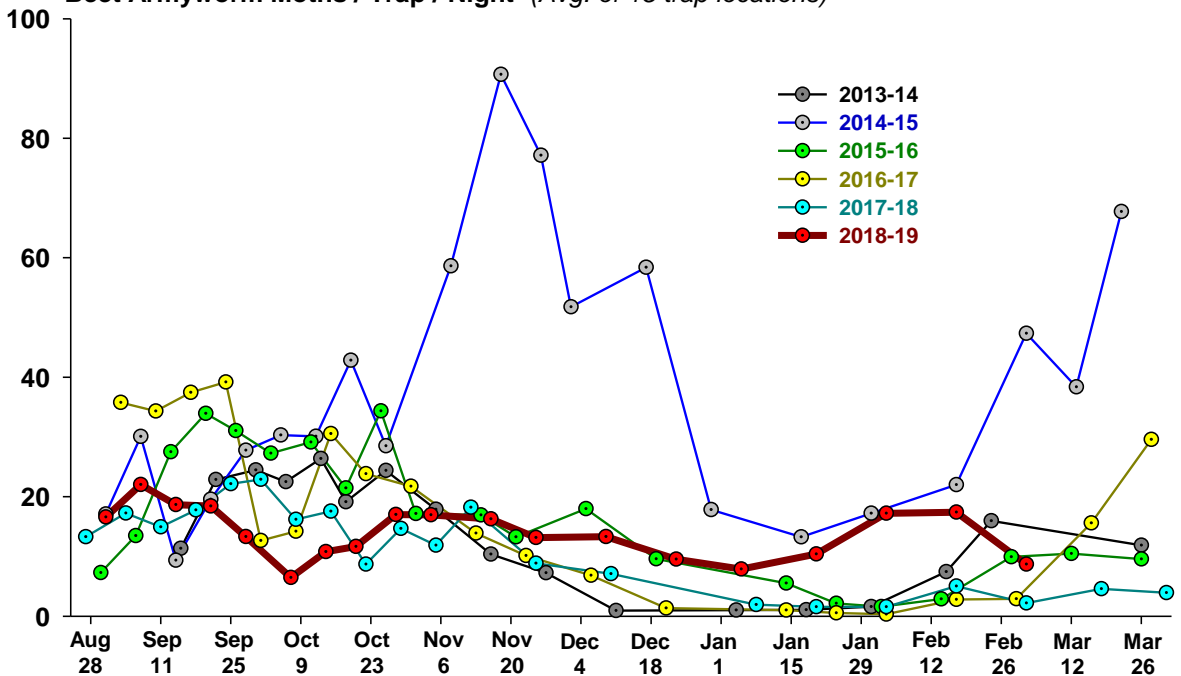
Beet Armyworm

2018-19



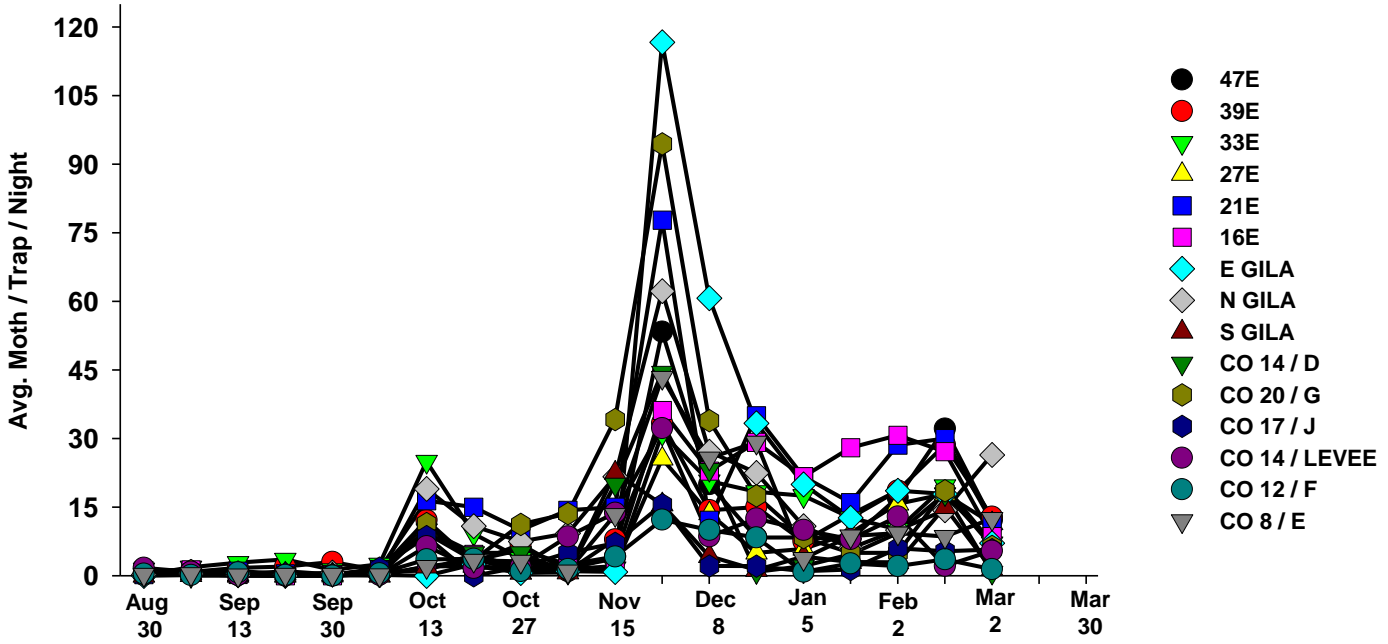
6 Year Average

Beet Armyworm Moths / Trap / Night (Avg. of 15 trap locations)



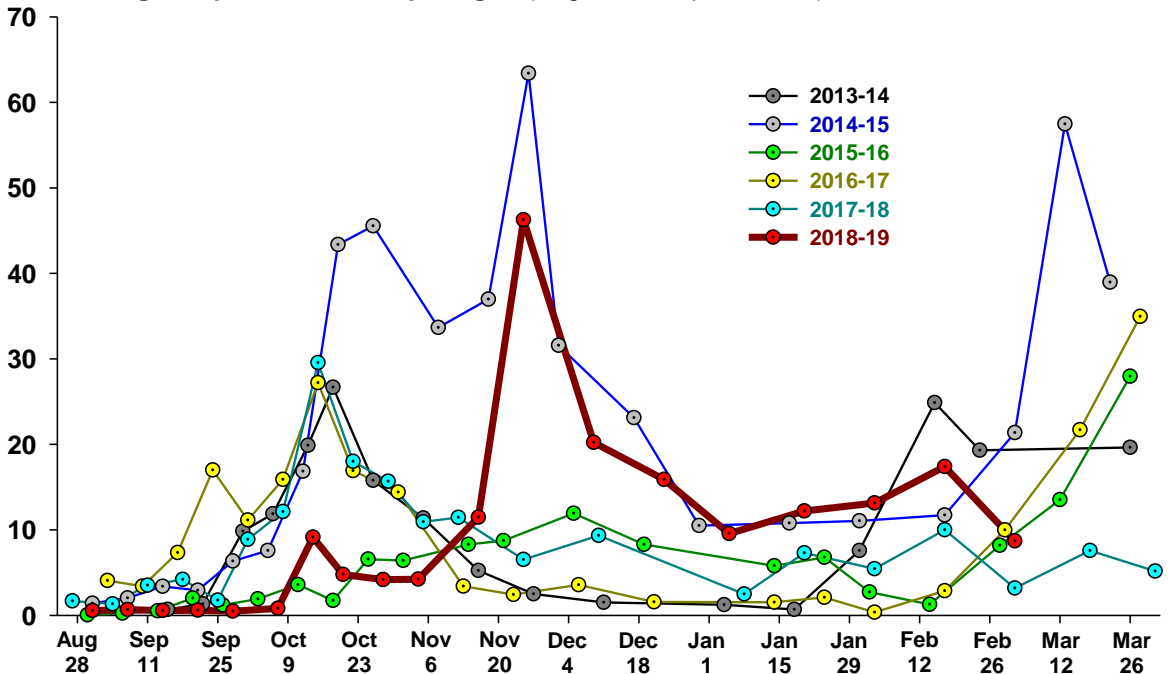
Cabbage Looper

2018-19



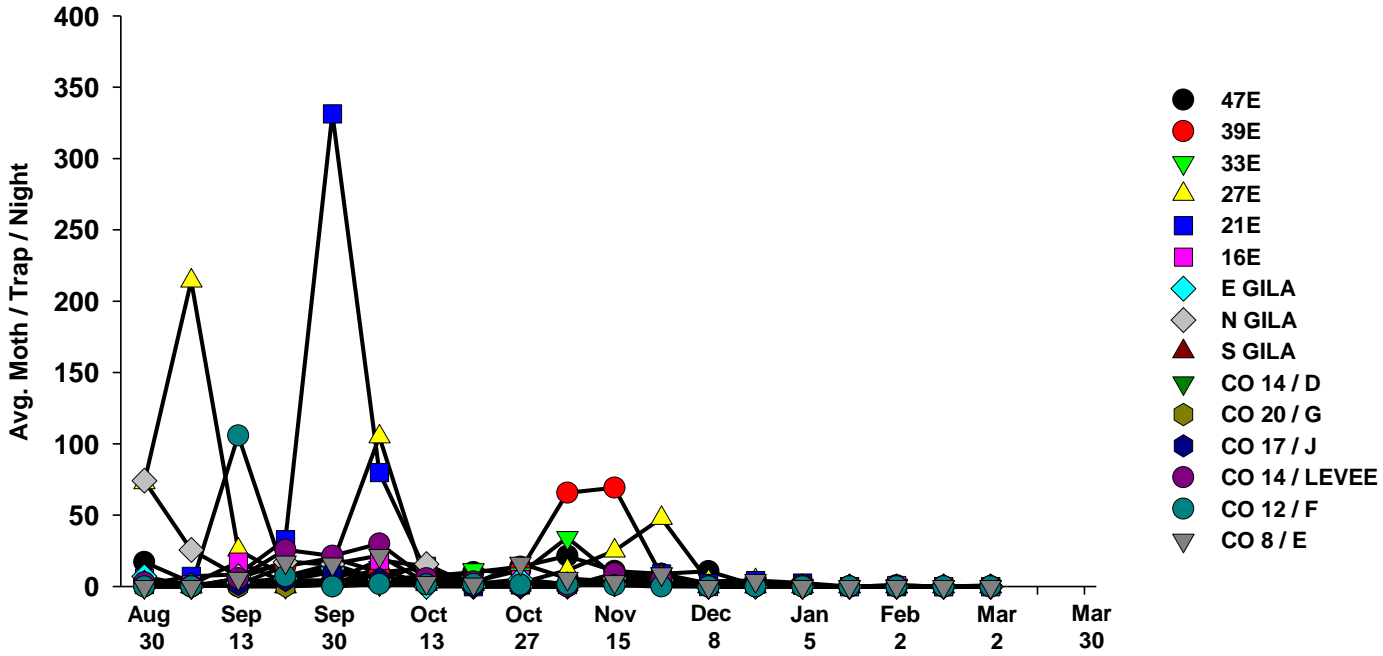
6 Year Average

Cabbage looper Moths / Trap / Night (Avg. of 15 trap locations)



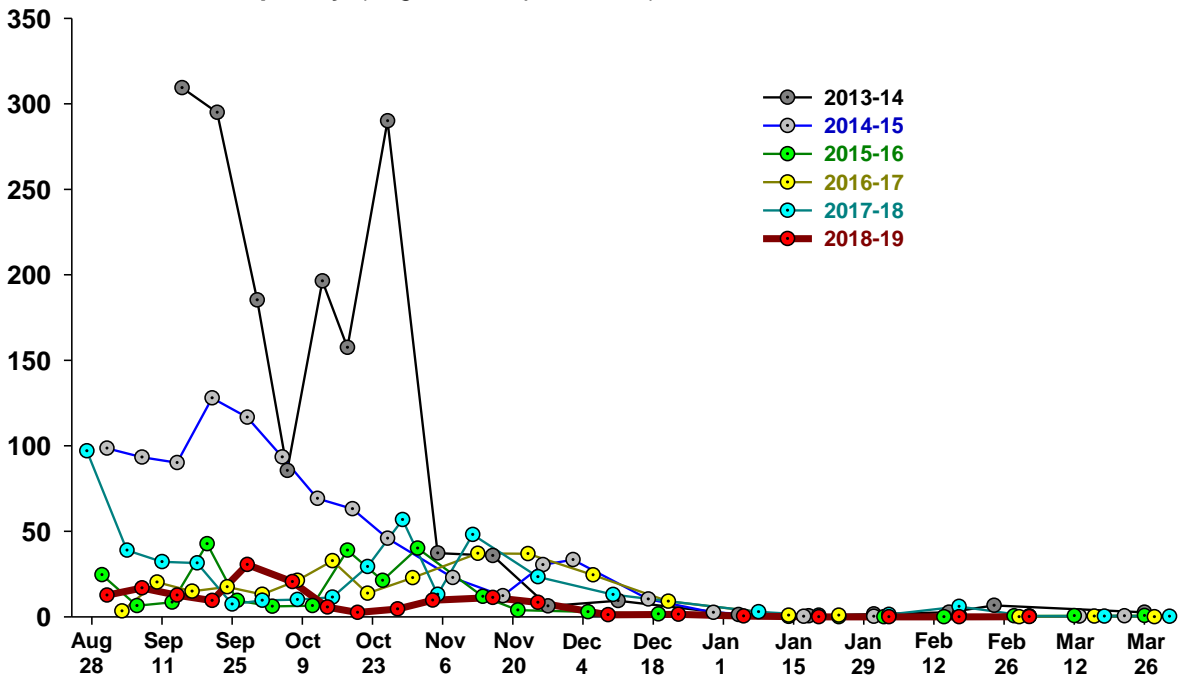
Whiteflies

2018-19



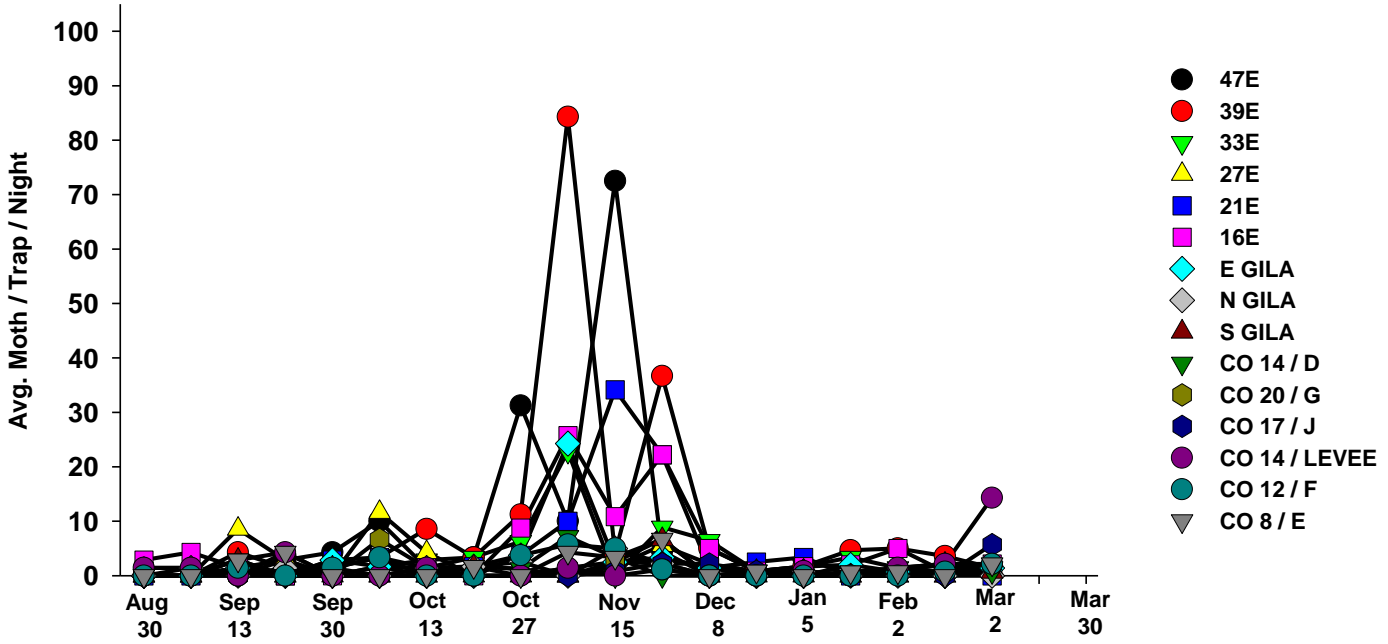
6 Year Average

Whiteflies / Trap / Day (Avg. of 15 trap locations)



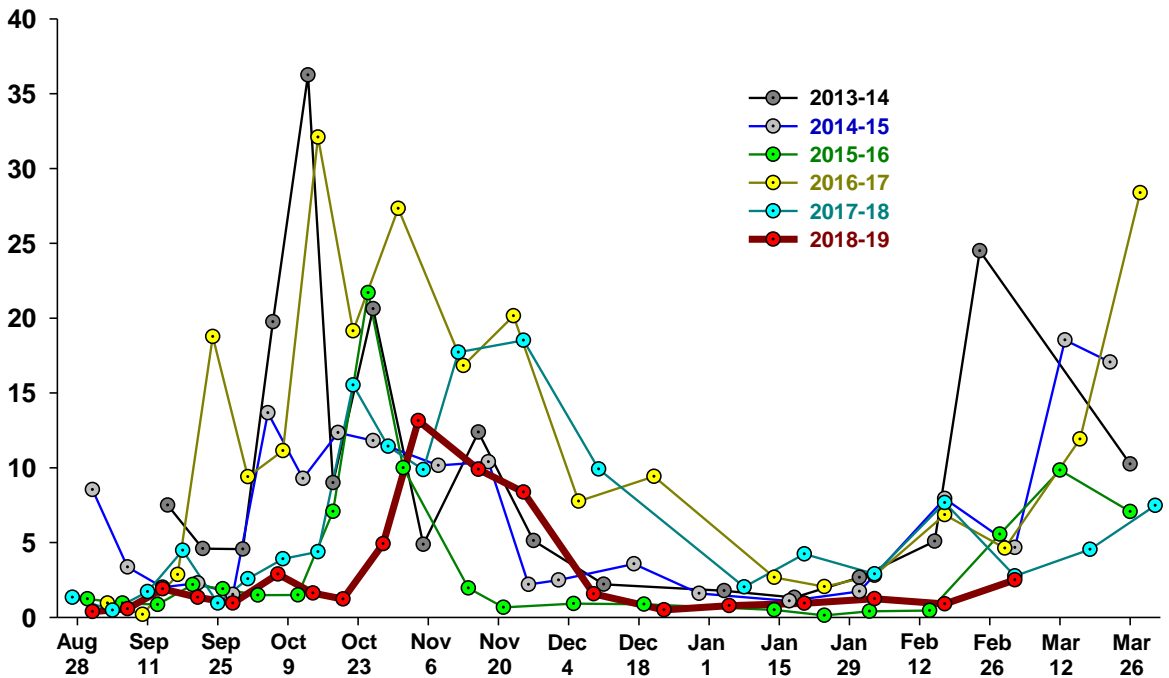
Thrips

2018-19



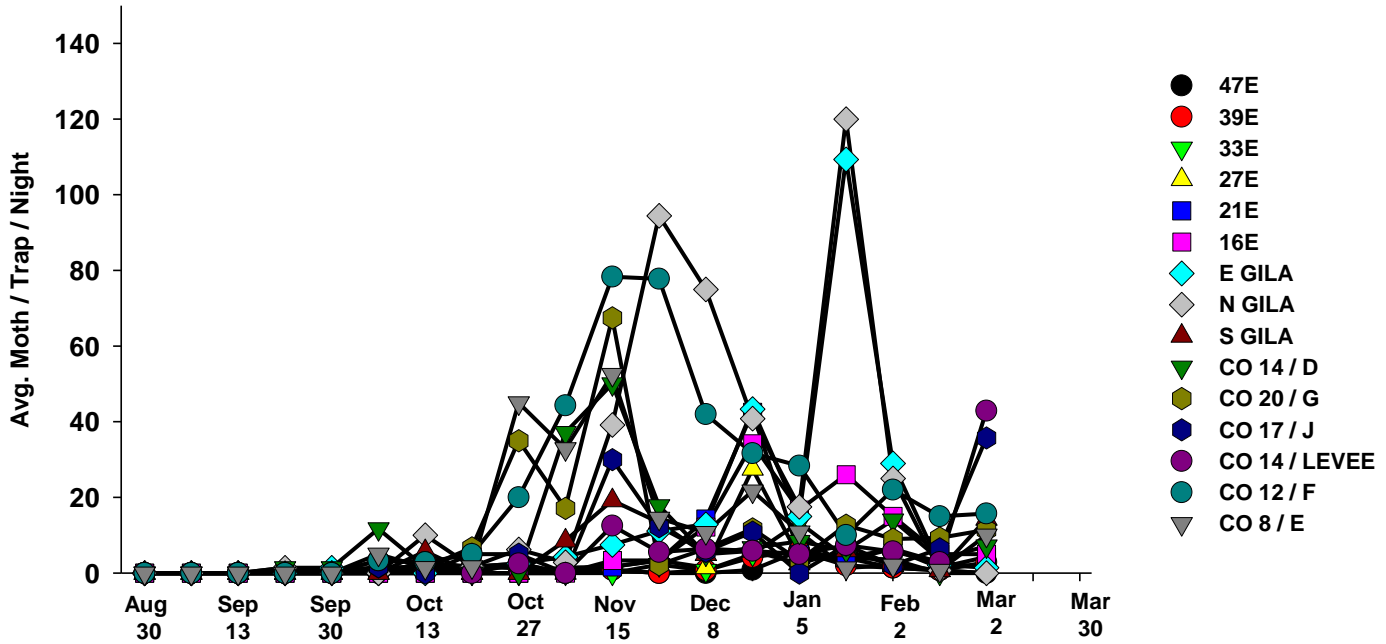
6 Year Average

Thrips / Trap / Day (Avg. of 15 trap locations)



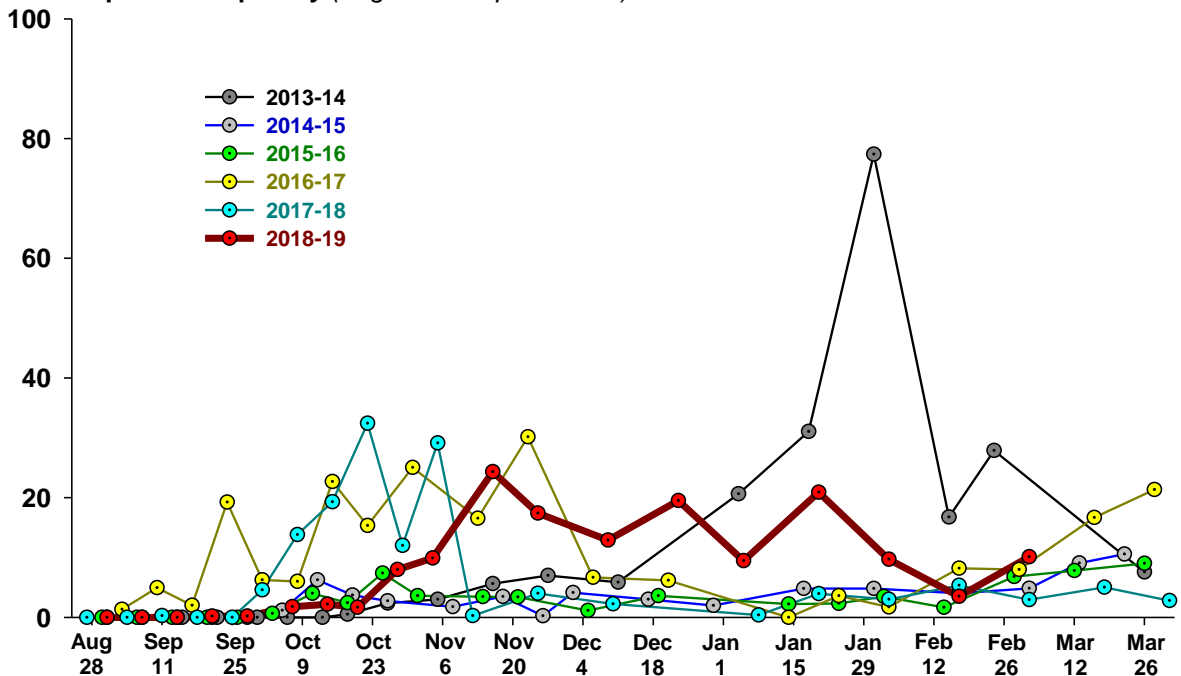
Aphids

2018-19

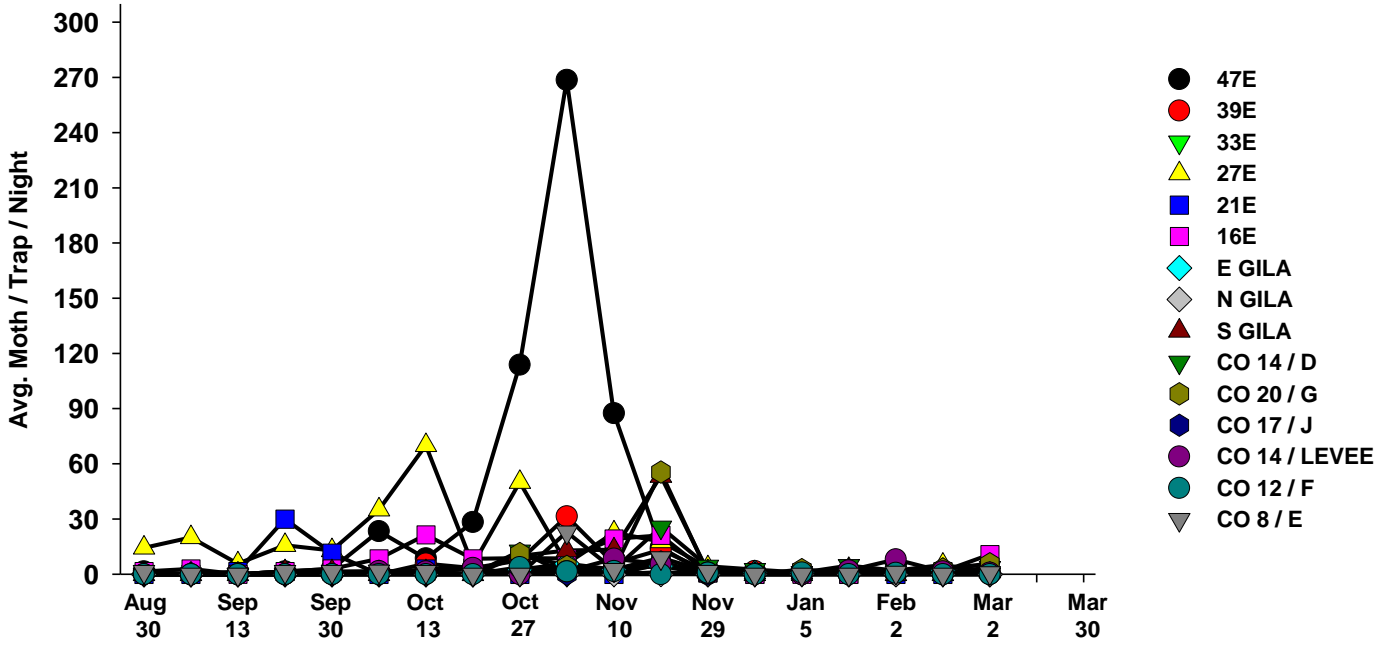


6 Year Average

Aphids / Trap / Day (Avg. of 15 trap locations)



Leafminers



6 Year Average

