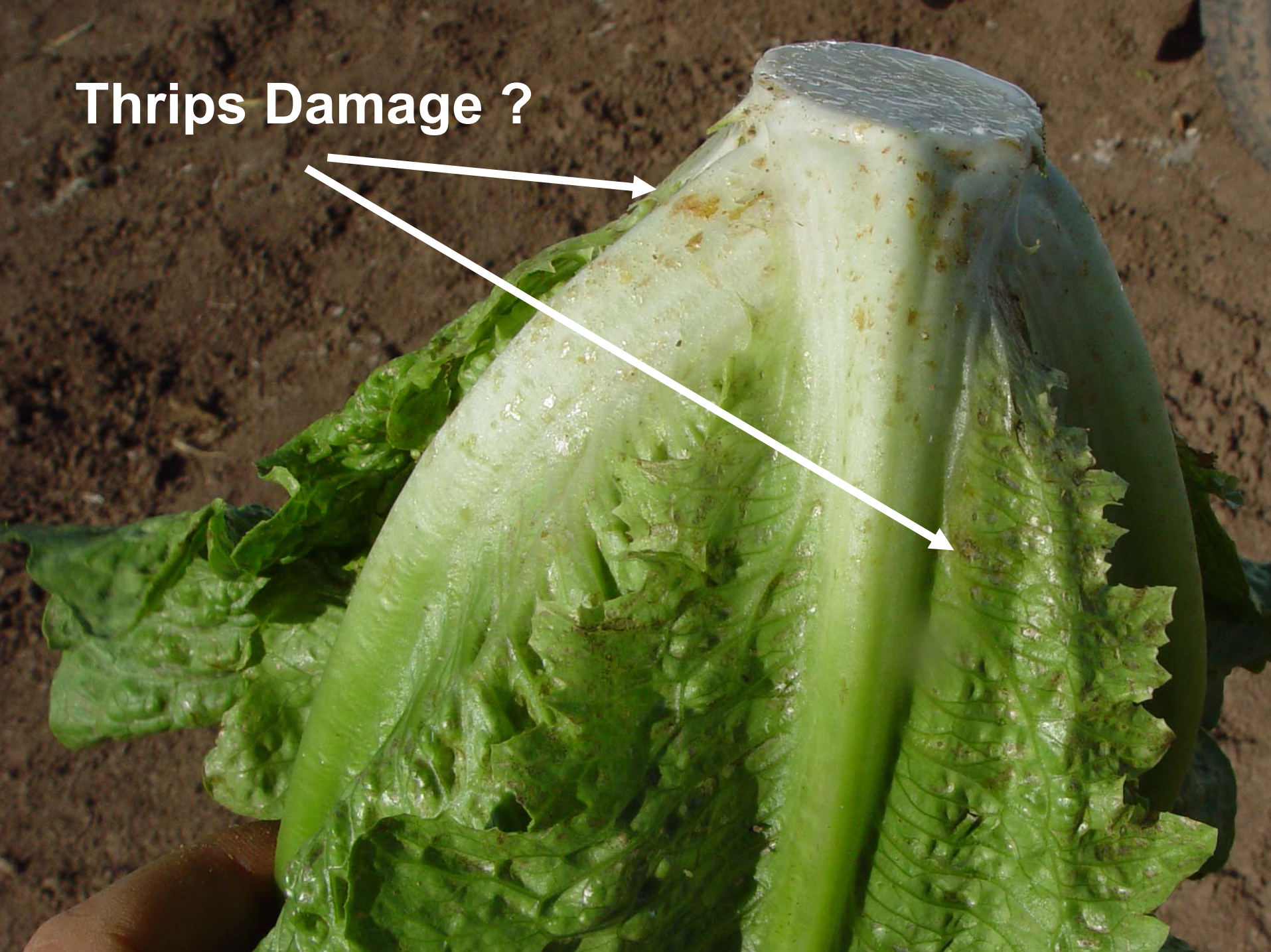
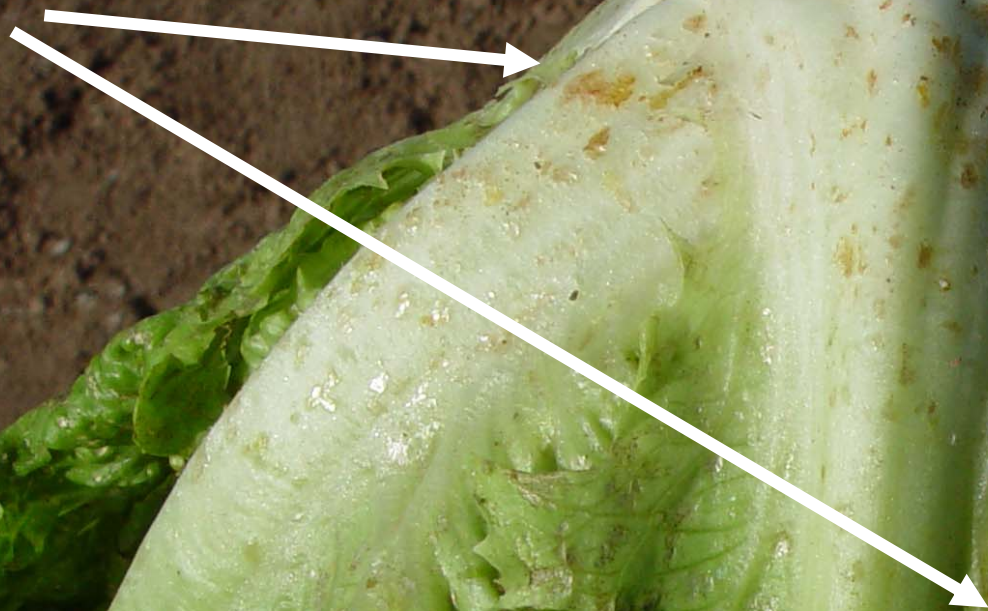


**Thrips Damage ?**









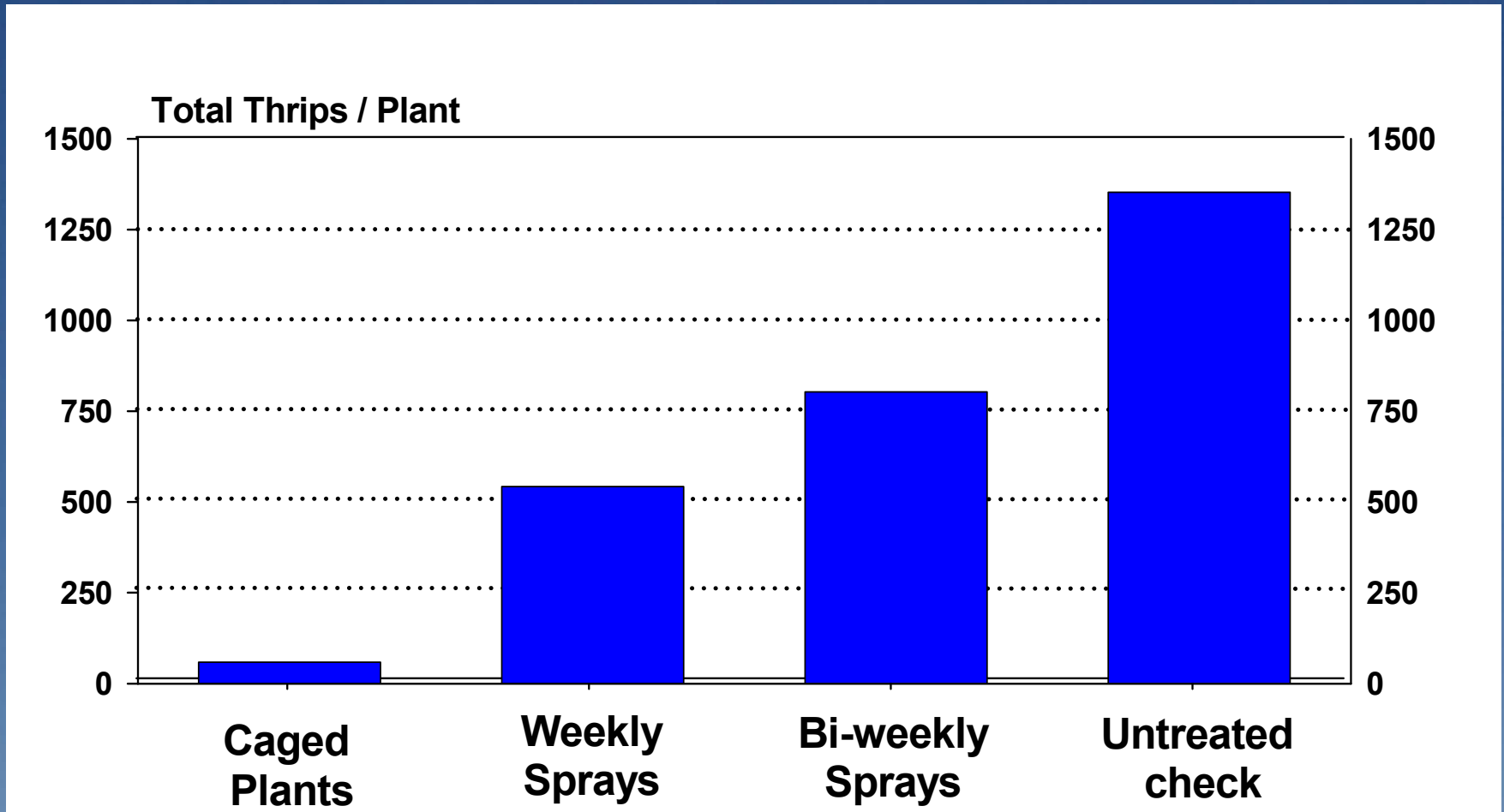






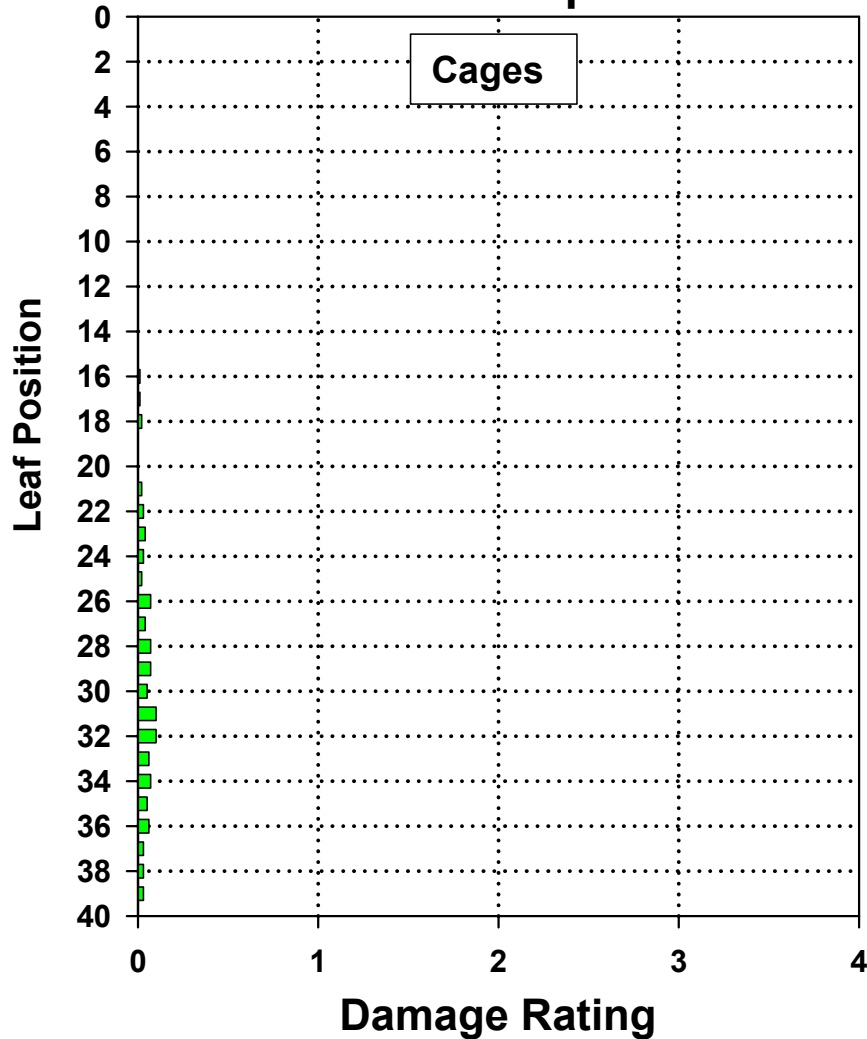




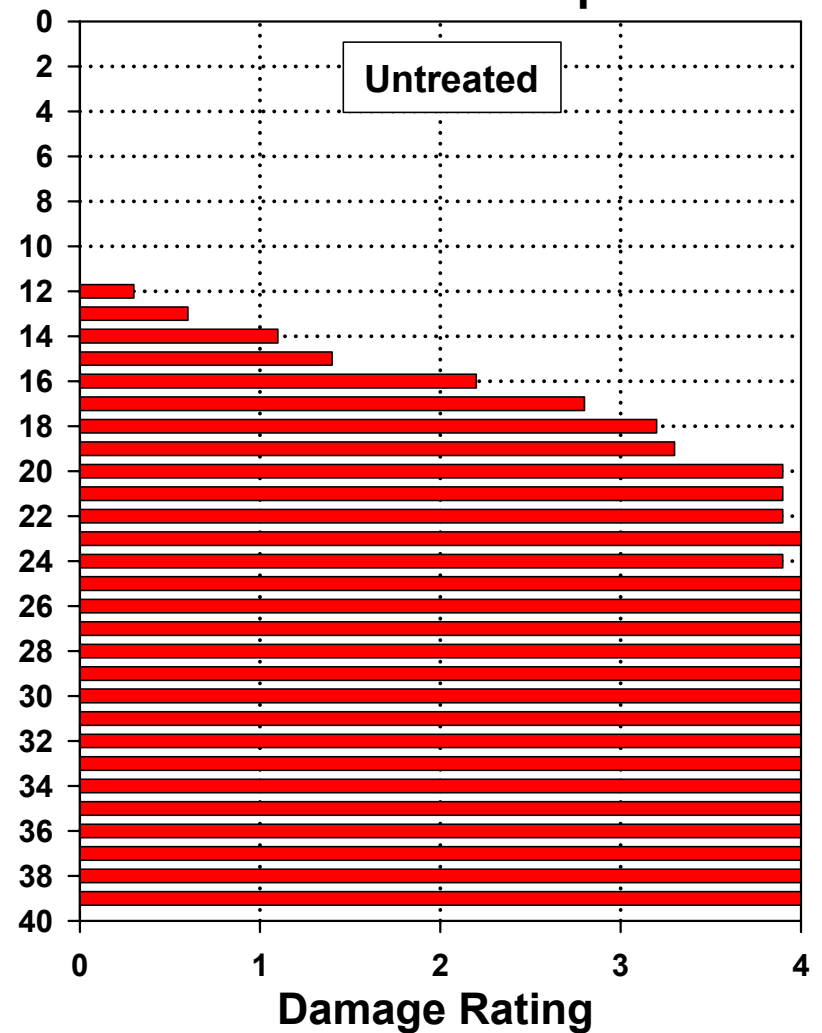


# Thrips Damage 'scarring' in Romaine

17 adults/ plant  
42 larvae / plant



231 adults/ plant  
1122 larvae / plant





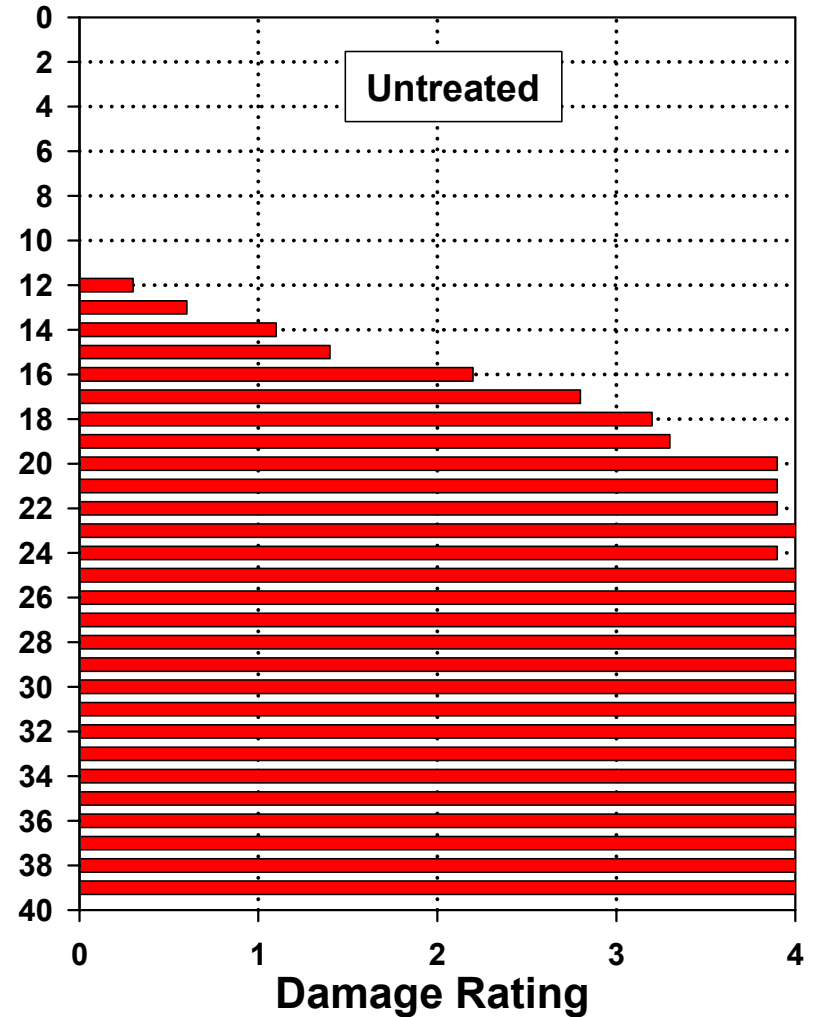
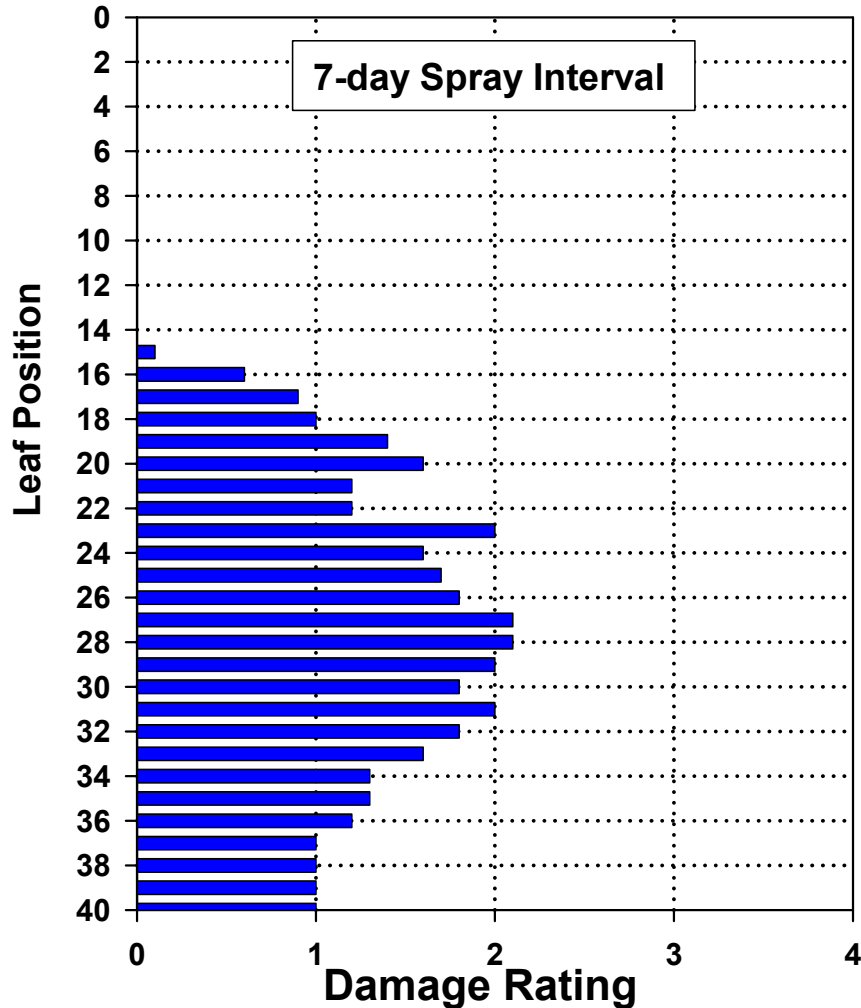




# Thrips Damage 'scarring' in Romaine

203 adults/ plant  
390 larvae / plant

231 adults/ plant  
1122 larvae / plant





# Rib Bronzing





The image shows two heads of lettuce, likely romaine, laid out on a light-colored, sandy soil. The lettuce on the left is labeled 'Untreated' and has a more compact, upright growth habit with smaller, more tightly packed leaves. The lettuce on the right is labeled 'Caged Plants' and is significantly larger, with much broader, more spread-out leaves that show a more pronounced ruffled or wavy texture. Both heads have a pale green to white core. The background is a simple, textured ground surface.

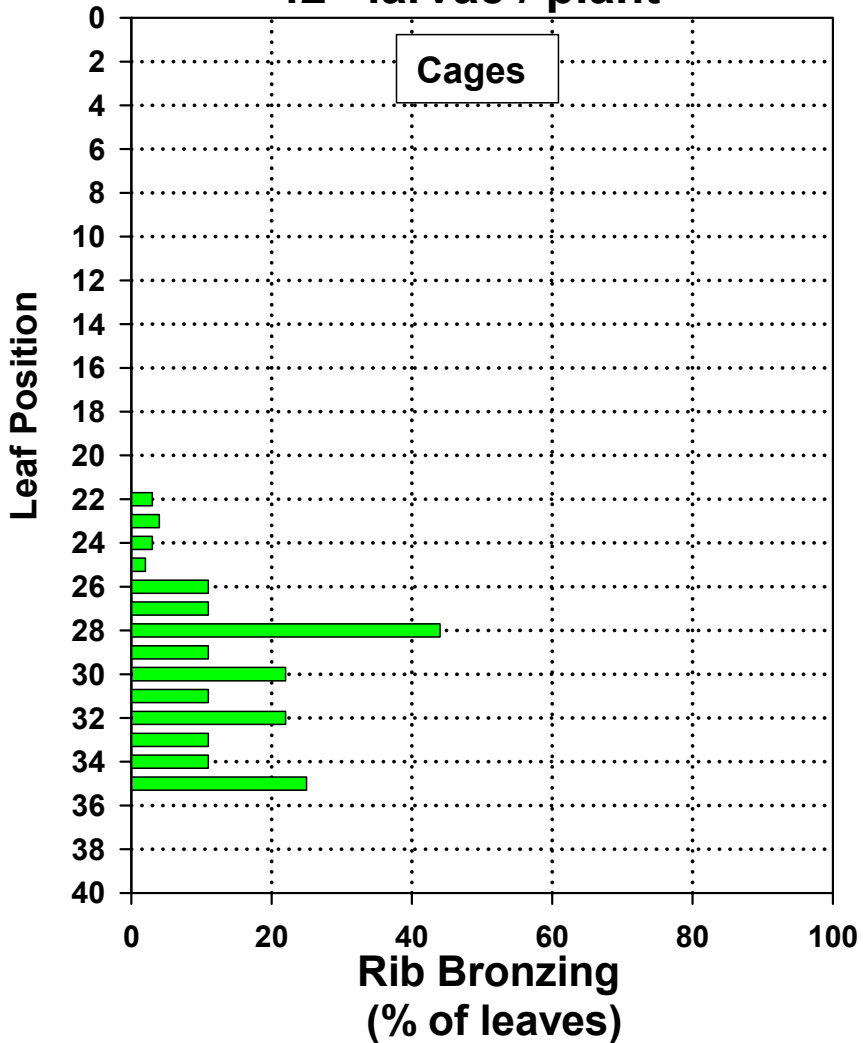
**Untreated**

**Caged Plants**

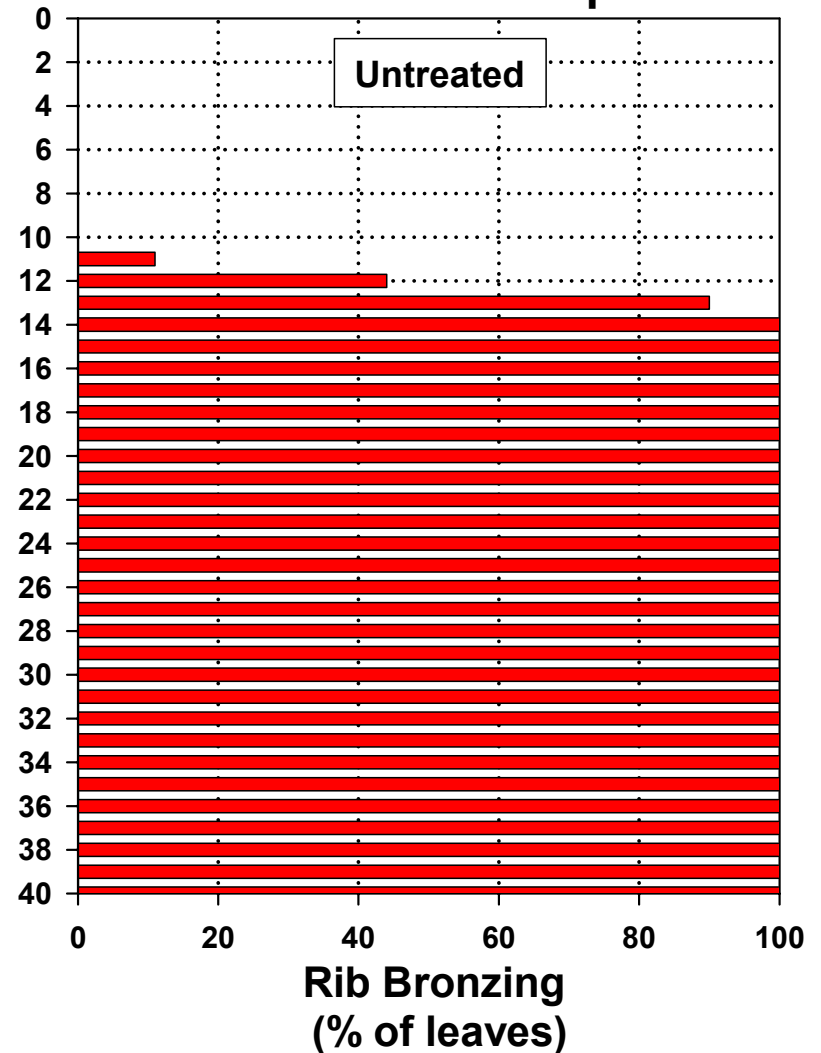


# Thrips Damage 'Rib bronzing' in Romaine

17 adults/ plant  
42 larvae / plant



231 adults/ plant  
1122 larvae / plant



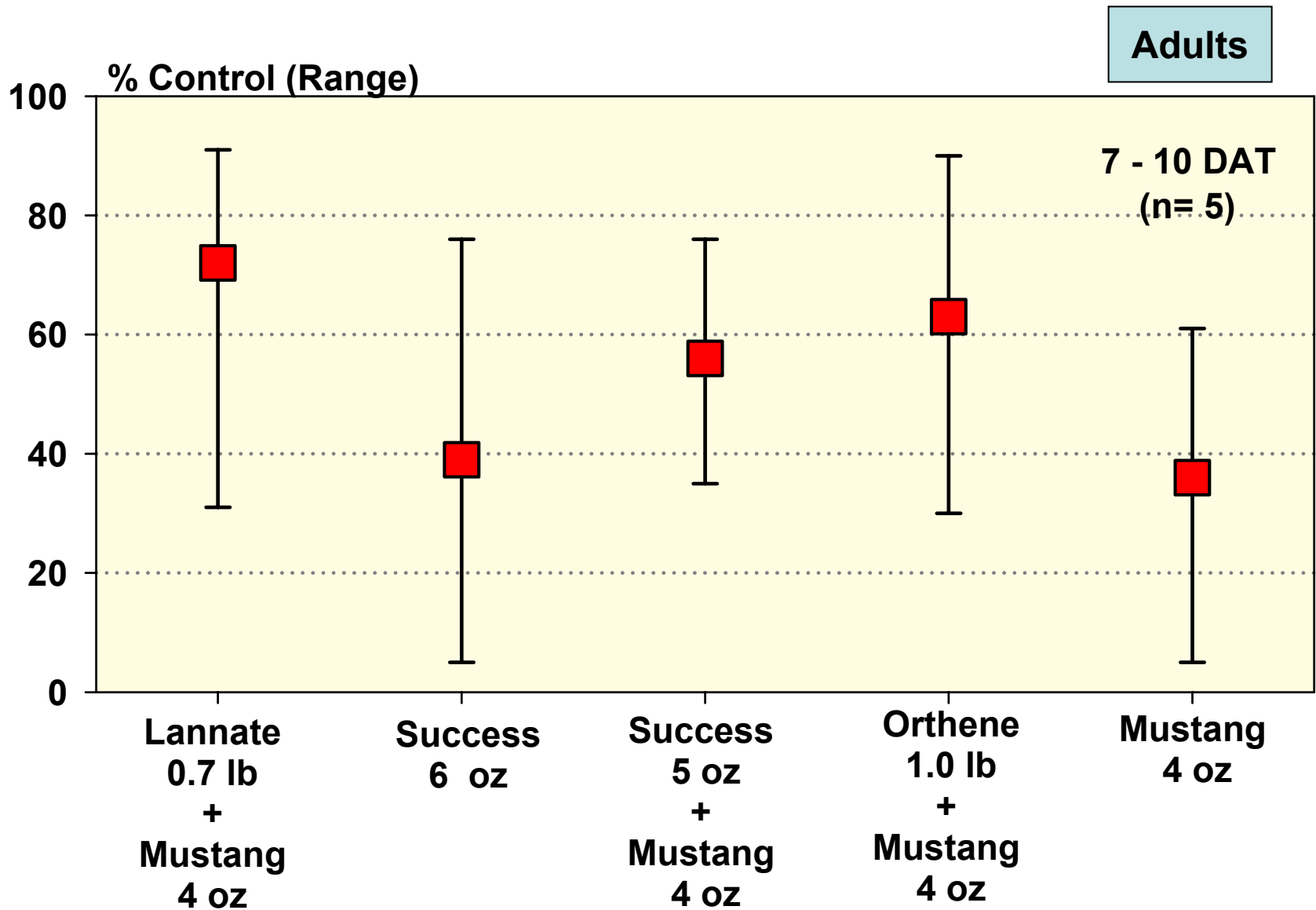


# Thrips Control



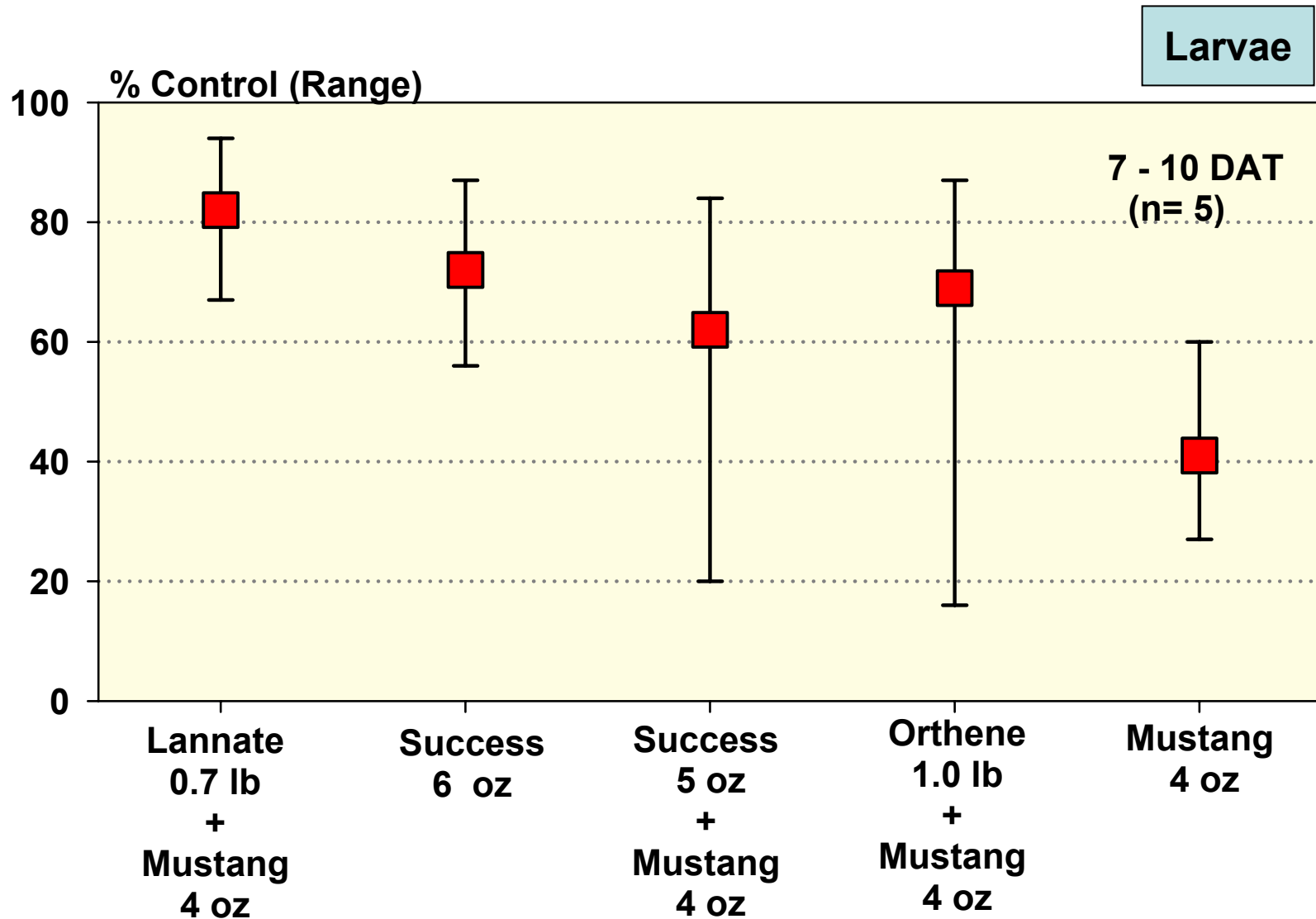


# Thrips Control in Head Lettuce – 2003



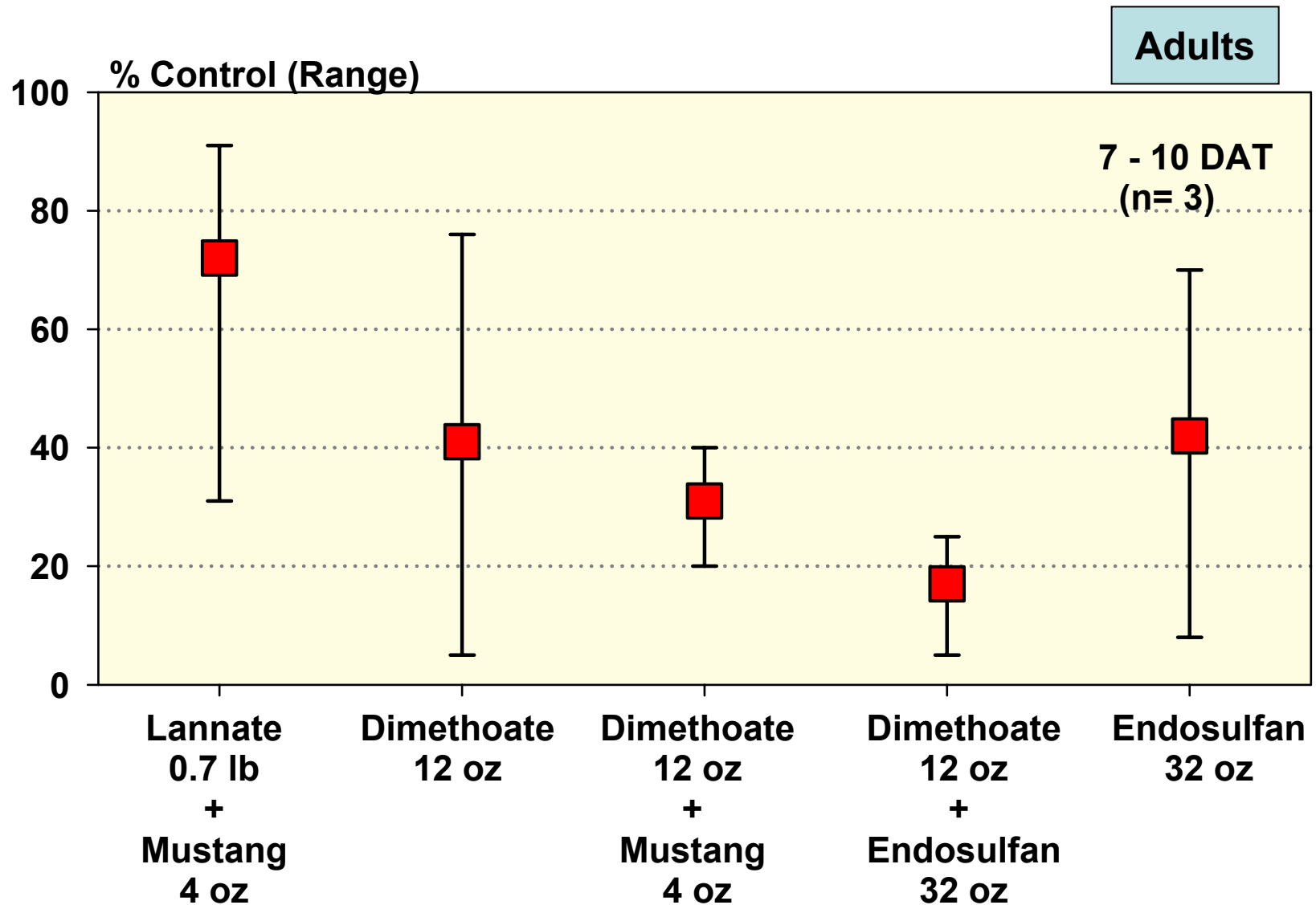


# Thrips Control in Head Lettuce – 2003



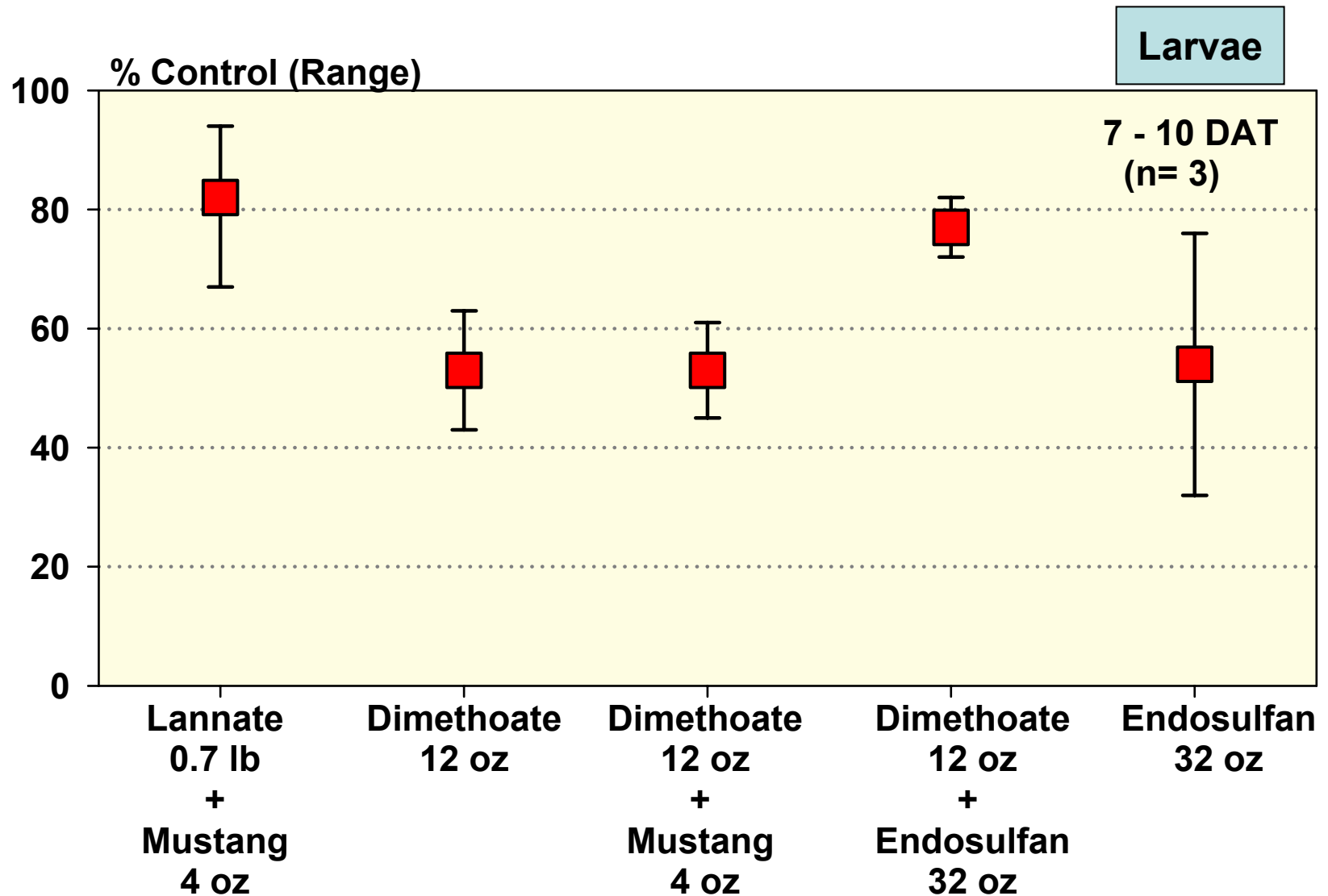


# Thrips Control in Head Lettuce – 2003





# Thrips Control in Head Lettuce – 2003





## Western Flower Thrips in Lettuce

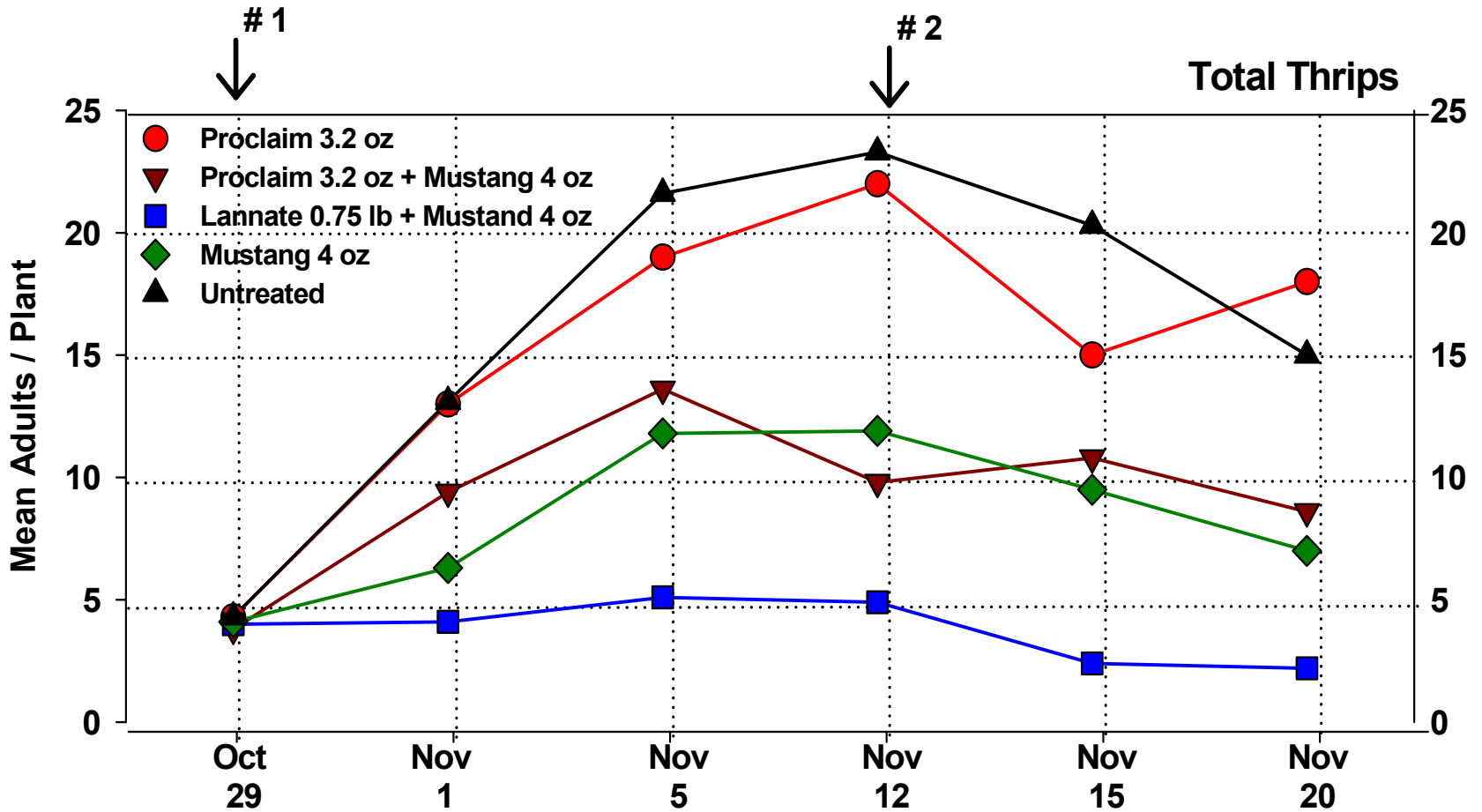
Does Proclaim<sup>®</sup>  
Control Thrips?

**NO**





# Does Proclaim® Control Thrips?





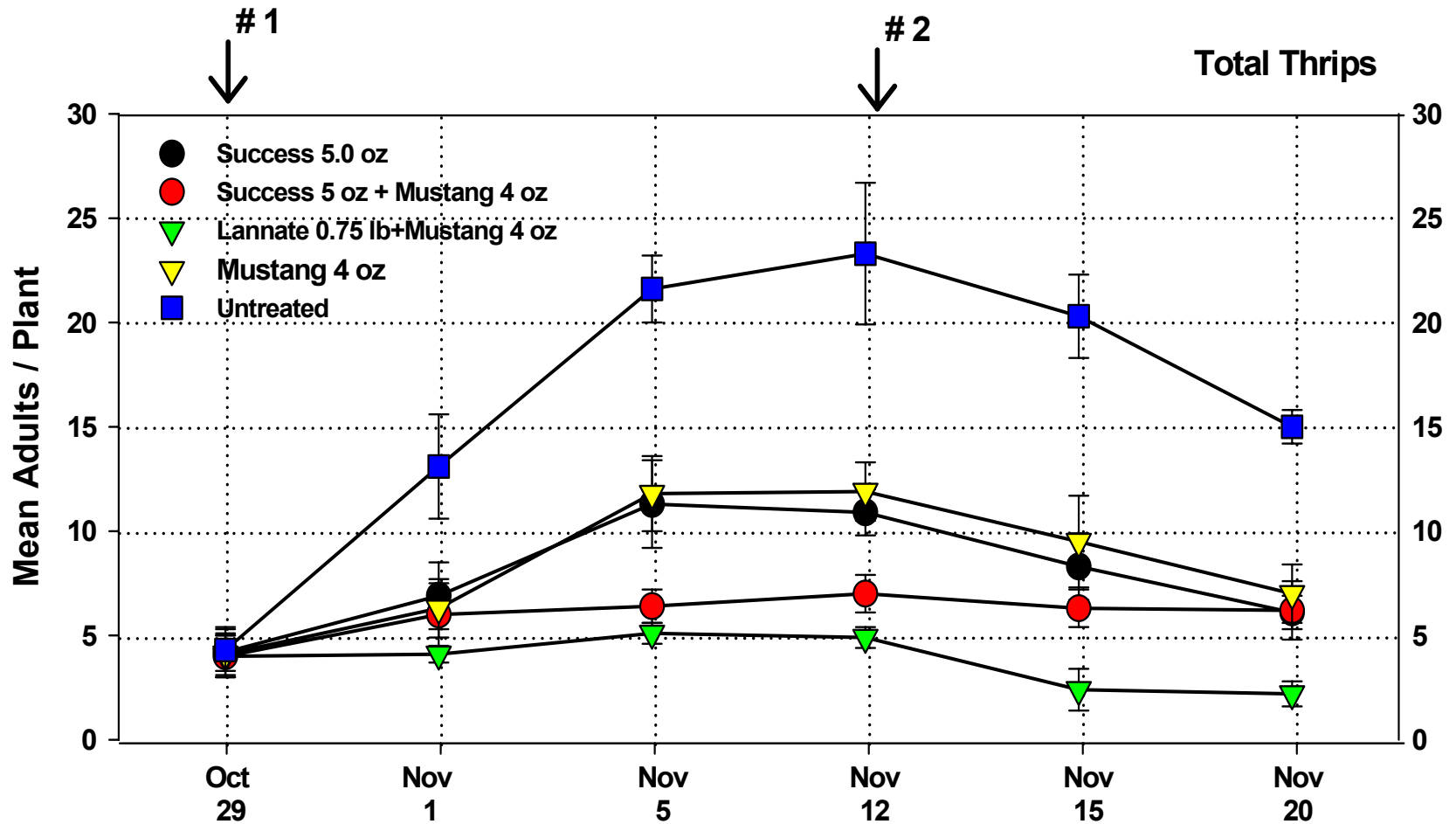
# Western Flower Thrips in Lettuce

**What Rate of Success<sup>®</sup>  
Should I Use For Thrips?**

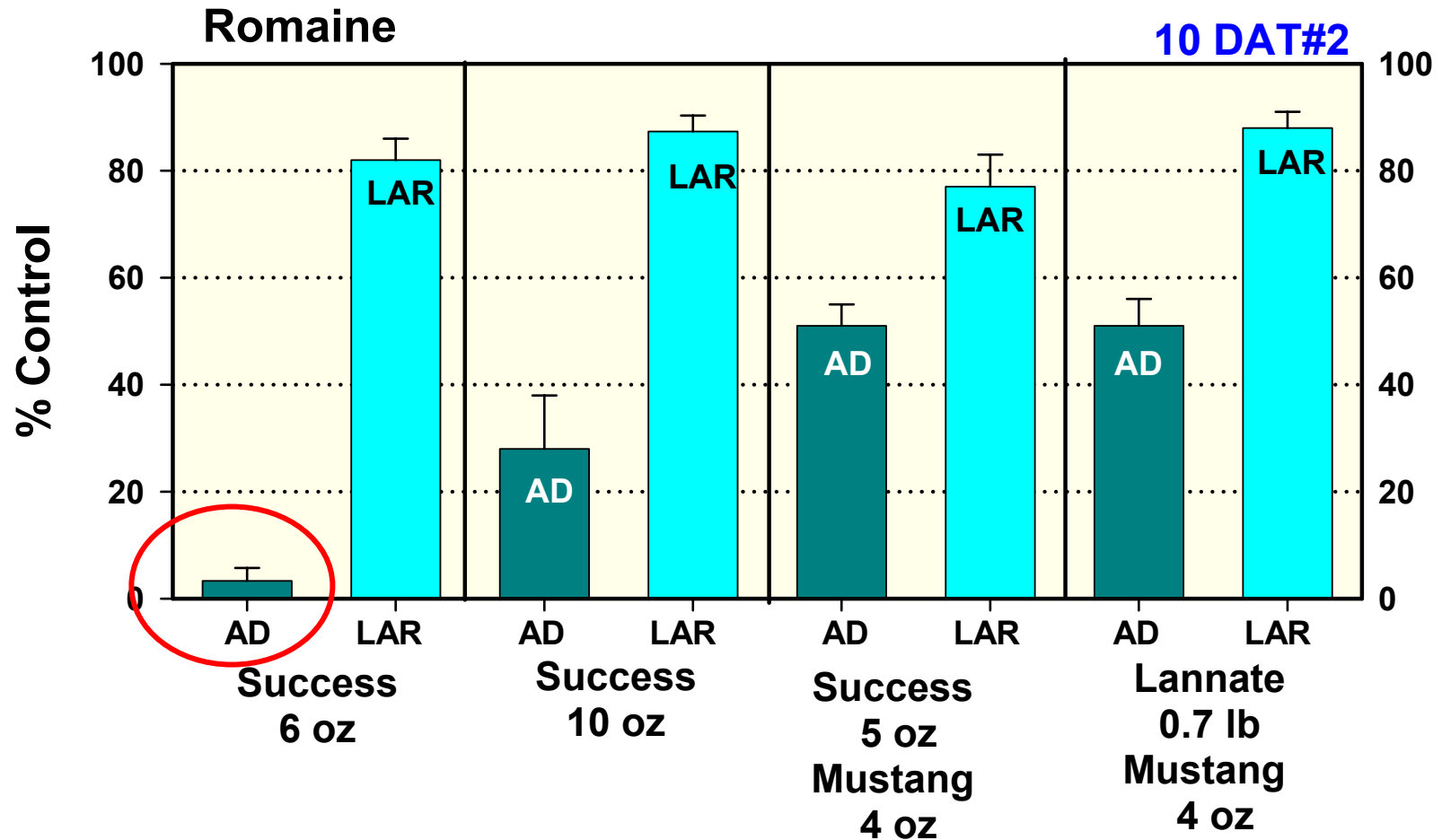




# What Rate of Success<sup>®</sup> Should I Use For Thrips?

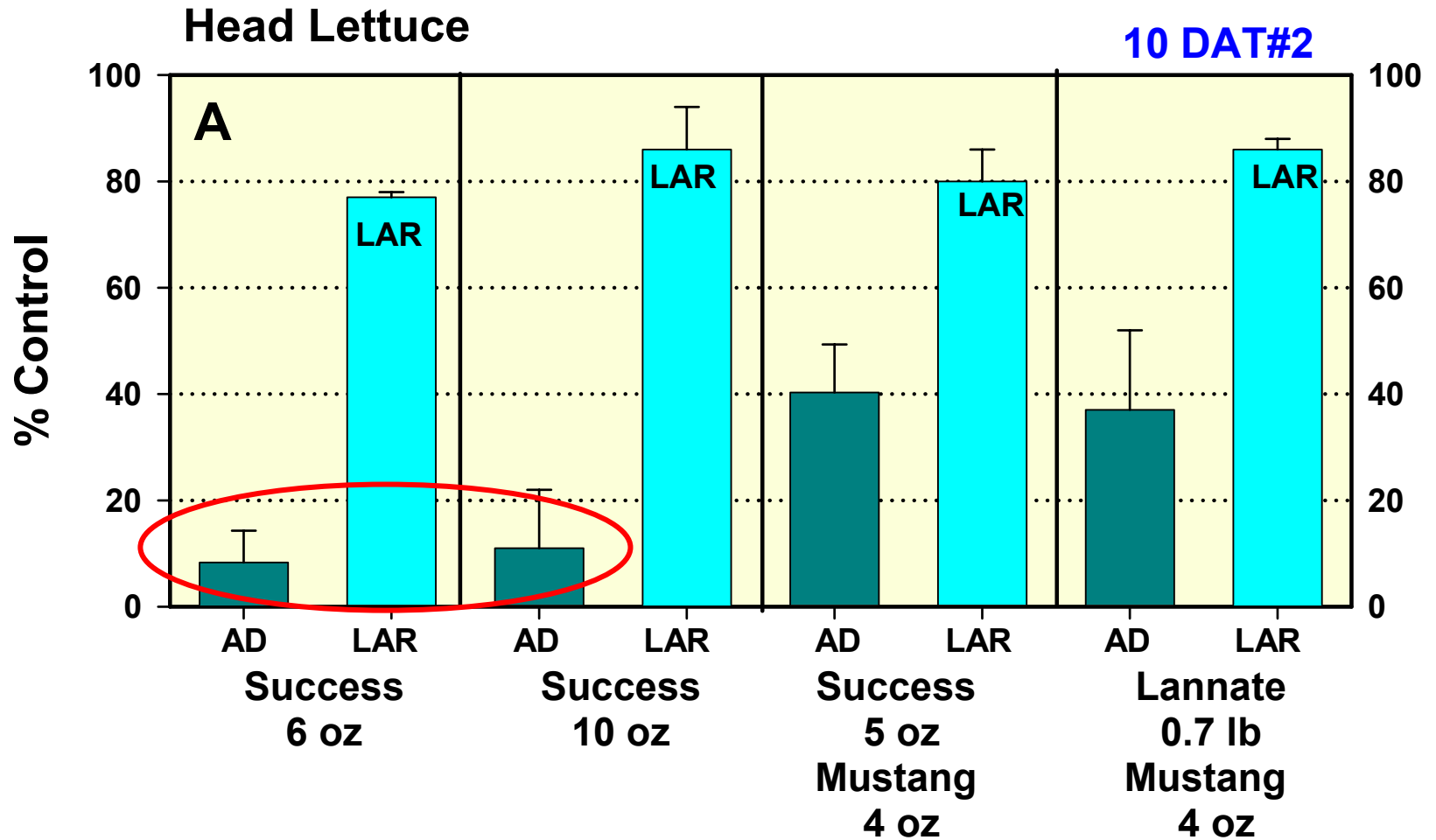


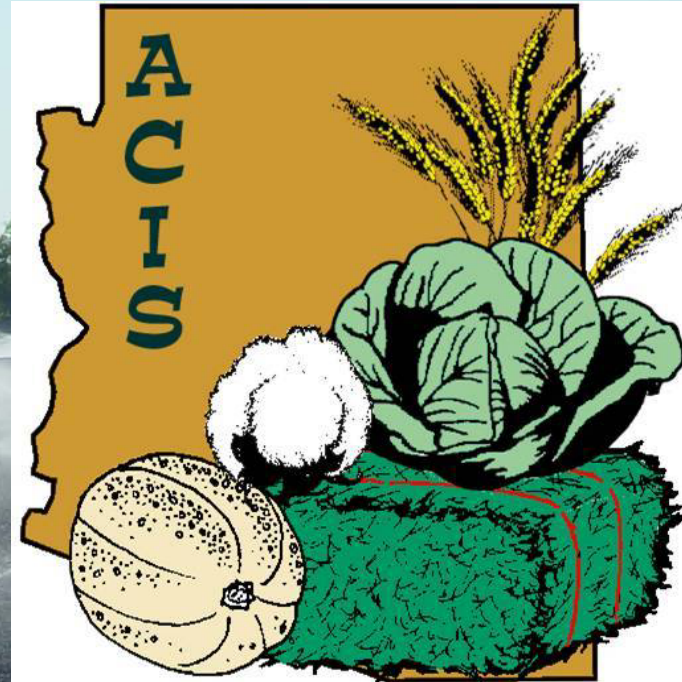
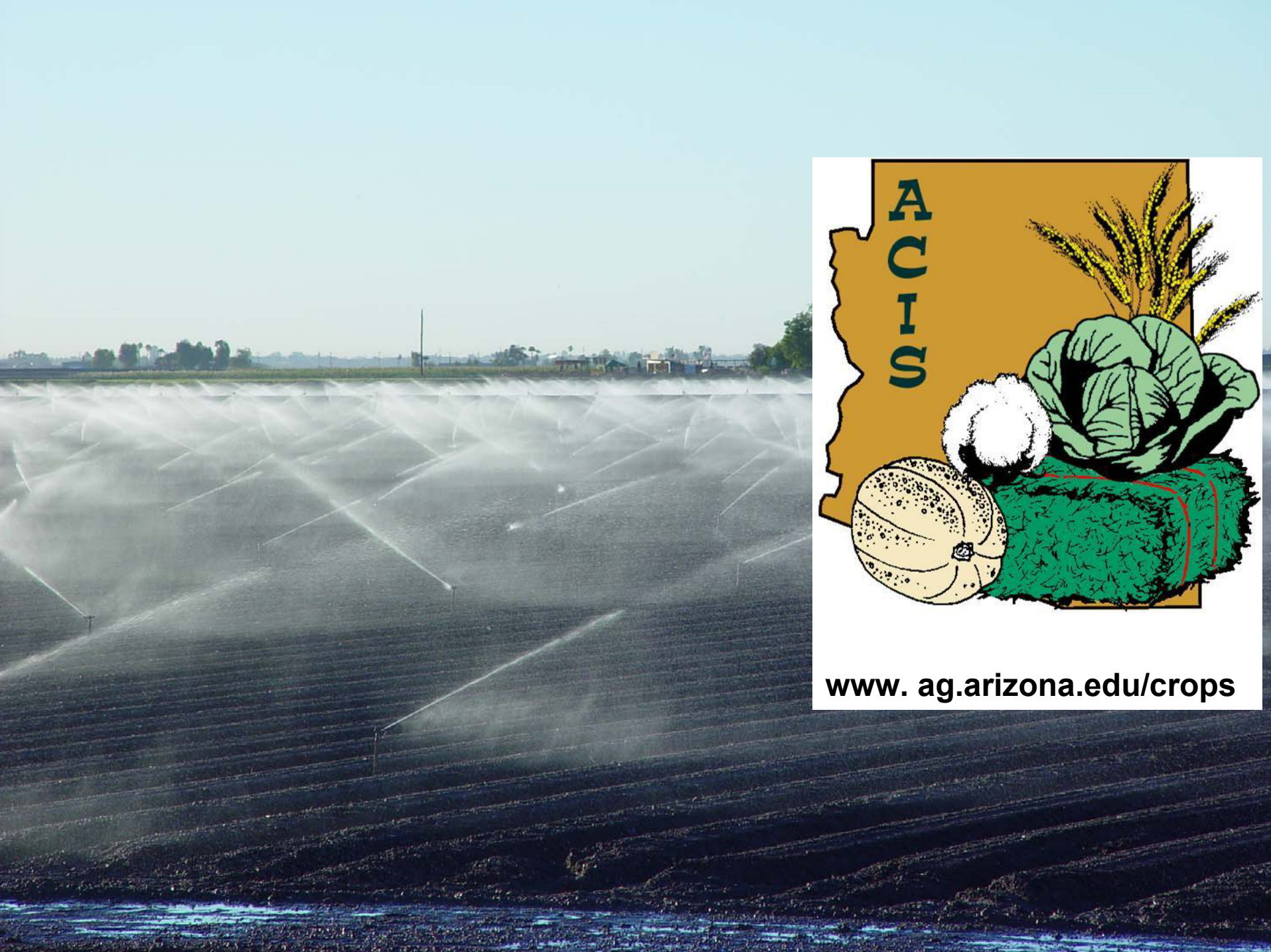
# What Rate of Success® Should I Use For Thrips?





# What Rate of Success® Should I Use For Thrips?





[www. ag.arizona.edu/crops](http://www.ag.arizona.edu/crops)