

AGFD

AQUATIC INVASIVE SPECIES PROGRAM

UPDATING ARIZONA'S AIS DIRECTOR'S ORDERS FOR 2016...



Tom McMahon

AIS Program Coordinator
Wildlife Management Division
Aquatic Wildlife Branch



AGFD AQUATIC INVASIVE SPECIES PROGRAM

...WHY AND HOW??

DON'T MOVE A MUSSEL

NOW IT'S THE LAW

Clean, Drain and Dry your BOAT

Follow these steps to inspect and decontaminate your watercraft or equipment of any possible "hitchhikers:"
(according to AIS Director's Orders 1, 2 and 3)

DAY USERS (boat in water for 5 days or less)

- 1. Clean** — Remove all mud, plants and animals from every part of your boat, trailer and equipment, including your anchor, engine-cooling water.
- 2. Drain** — Pull the plug. Before you leave the area, eliminate all water from your boat, including its livewells, ballast and engine-cooling water.
- 3. Dry** — Allow time for your boat to completely dry before you launch in any other waters. This amount of time may vary depending on humidity and temperature. Your boat's dry time should be at least 5 days.

LONG TERM OR MARINA-BASED USERS (boat in water for 6 days or more)

- 4. Decontaminate** — Clean your watercraft with hot, high pressure water to remove all invasive species, such as quagga.
- 5. Desiccate** — After decontamination leave your dried boat out of the water for 7 days in summer and 10 days in winter.

Inspect everything: if it gets wet, it could harbor mussels.

Dock lines
Anchor
Trailer
Hull
Thru hull fittings
Storage
Livewells
Prop
Axle Rollers
Bilge
Intakes

STOP AQUATIC HITCHHIKERS!

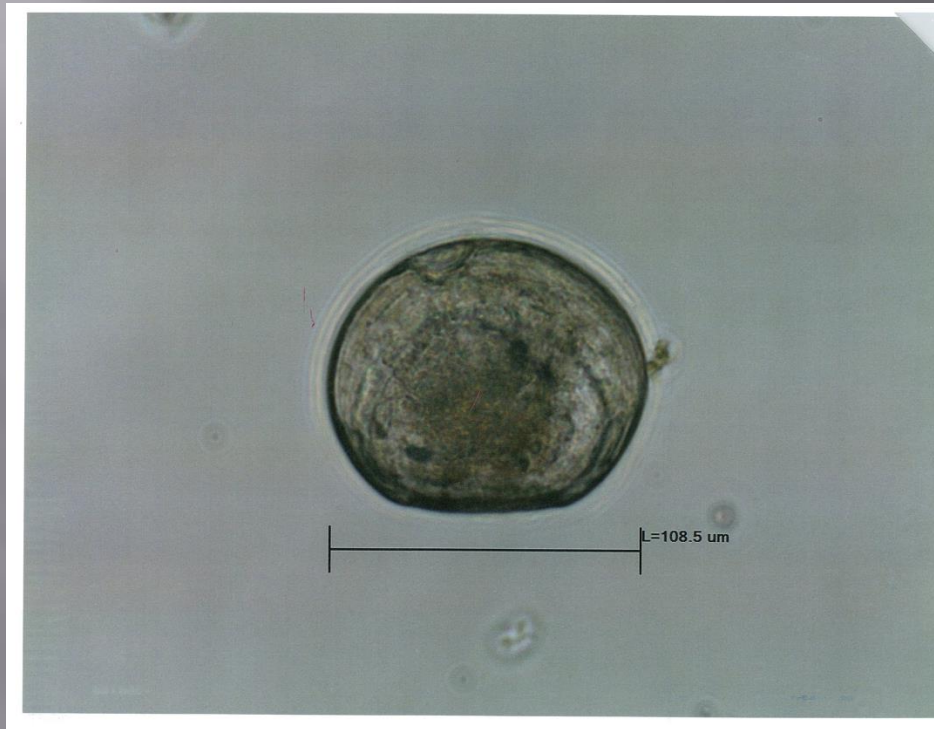
It's the right thing to do

wildlife.ca.gov • azgfd.gov/ais • ndow.org



AGFD

AQUATIC INVASIVE SPECIES PROGRAM



USBOR monitoring – Sample collected at Canyon Lake
(Mormon Flat Dam) on Oct 29, 2015

AGFD

AQUATIC INVASIVE SPECIES PROGRAM



USBOR / AzGFD monitoring – Samples collected at Canyon Lake, Fall 2015

In addition, subsequent sampling efforts by USBOR and AzGFD confirmed PCR and limited microscopy findings of Dreissenid mussels at the Canyon Lake Marina, Apache Lake (Horse Mesa Dam), and Granite Reef Dam (lower Salt).

AGFD

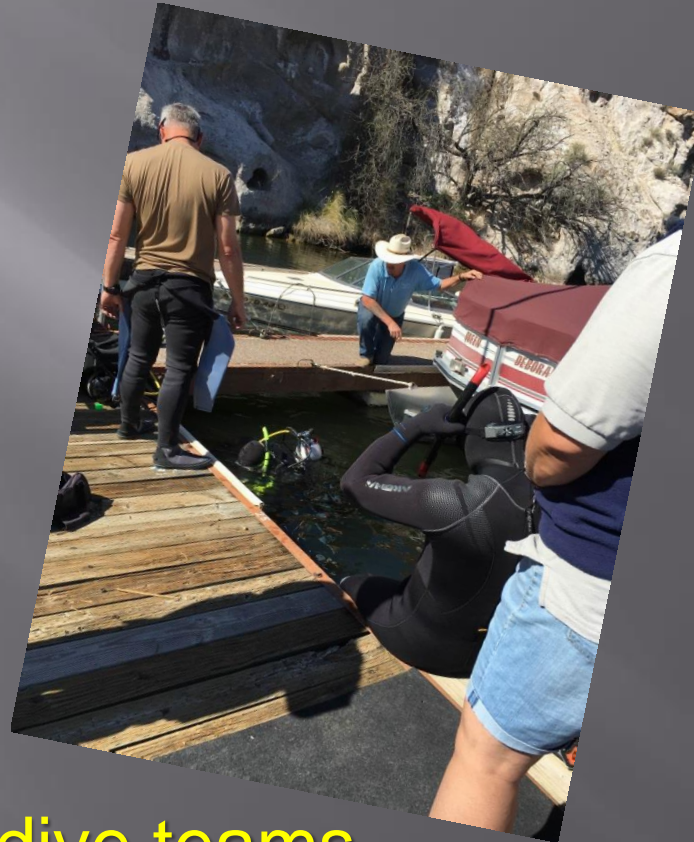
AQUATIC INVASIVE SPECIES PROGRAM



AzGFD – Long-Term Moored Boat at Canyon Lake
Marina; just out of the water for transport.
December 15, 2015

AGFD

AQUATIC INVASIVE SPECIES PROGRAM



AzGFD Dive
February 25th,
2016
Canyon Lake
Marina area
(near Dock H)

2 dive teams.

Inspected 3 cables holding Dock H in place and rock wall on west end of dock.

AGFD

AQUATIC INVASIVE SPECIES PROGRAM

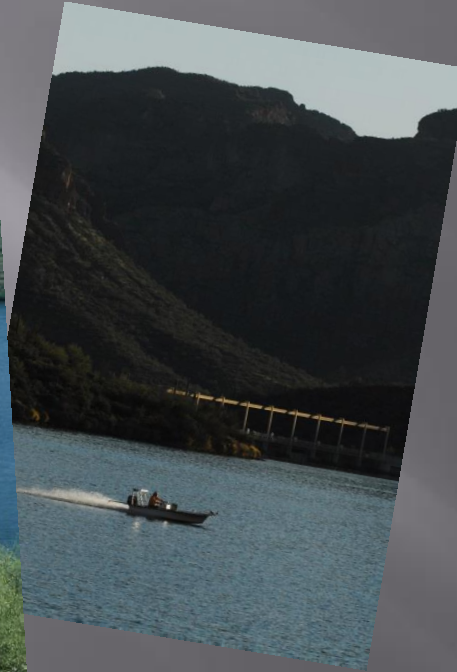


AzGFD Dive
February 25th,
2016
Canyon Lake
Marina area
(near Dock H)

- Dive Team found 1 ADULT mussel attached to cable.
- USBOR plates were pulled and 2 ADULTS were attached to the rope.

AGFD

AQUATIC INVASIVE SPECIES PROGRAM



Aug, 2016
Saguaro Lake
Salt River Project
reported:

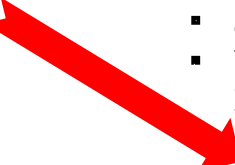
- Initial discovery of small ADULT Quagga mussels on Stewart Mtn Dam monitoring plates and on the face of the dam.

AGFD

AQUATIC INVASIVE SPECIES PROGRAM

FROM WESTERN REGIONAL PANEL-ANSTF “BUILDING CONSENSUS - 2012-14”

Waterbody definitions:

- 
- **Status Unknown** – Waters that have not been monitored.
 - **Undetected/Negative** - sampling/testing is ongoing and nothing has been detected, or nothing has been detected within the time frames for de-listing.
 - **Inconclusive** (temporary status), - Water body has not met the minimum criteria for detection (e.g. eDNA only).
 - Management Trigger → ▪ **Suspect** – Water body that has met the minimum criteria for detection once (e.g. one verified detection of an AIS).
 - **Positive** – Multiple (2 or more) subsequent sampling events that meet the minimum criteria for detection.
 - **Infested** – A water body that has an established (recruiting or reproducing) population of AIS.



AGFD

AQUATIC INVASIVE SPECIES PROGRAM

FROM WESTERN REGIONAL PANEL-ANSTF
“BUILDING CONSENSUS - 2012-14”

Waterbody definitions:

- **Status Unknown** – Waters that have not been monitored.
 - **Undetected/Negative** - sampling/testing is ongoing and nothing has been detected, or nothing has been detected within the time frames for de-listing.
 - **Inconclusive** (temporary status), - Water body has not met the minimum criteria for detection (e.g. eDNA only).
 - **Suspect** – Water body that has met the minimum criteria for detection once (e.g. one verified detection of an AIS).
 - **Positive** – Multiple (2 or more) subsequent sampling events that meet the minimum criteria for detection.
 - **Infested** – A water body that has an established (recruiting or reproducing) population of AIS.
- Management Trigger →



AGFD

AQUATIC INVASIVE SPECIES PROGRAM

FROM WESTERN REGIONAL PANEL-ANSTF
“BUILDING CONSENSUS – 2012-14”

Waterbody definitions:

- **Status Unknown** – Waters that have not been monitored.
- **Undetected/Negative** - sampling/testing is ongoing and nothing has been detected, or nothing has been detected within the time frames for de-listing.
- **Inconclusive** (temporary status), - Water body has not met the minimum criteria for detection (e.g. eDNA only).
- Management Trigger → ▪ **Suspect** – Water body that has met the minimum criteria for detection once (e.g. one verified detection of an AIS).
- **Positive** – Multiple (2 or more) subsequent sampling events that meet the minimum criteria for detection.
- **Infested** – A water body that has an established (recruiting or reproducing) population of AIS.



AGFD

AQUATIC INVASIVE SPECIES PROGRAM

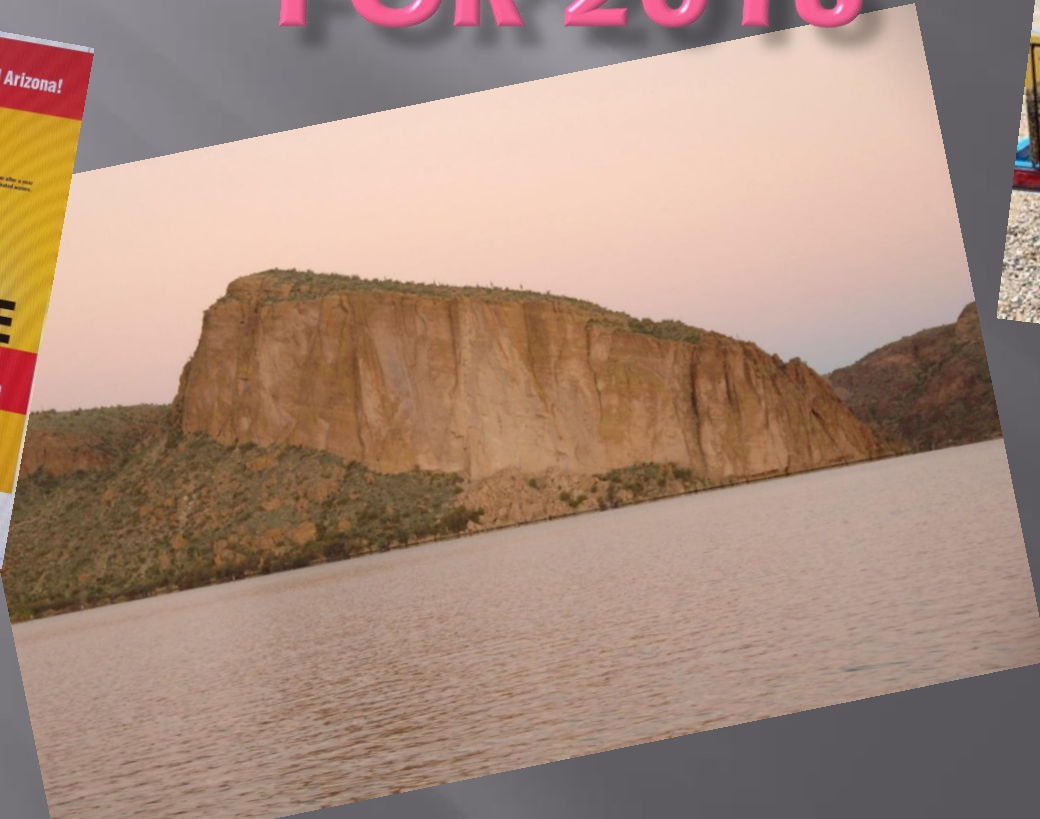
Findings (and the pumpback capabilities of Horse Mesa and Mormon Flat Dams) indicate a “Suspect” to “Positive” designation for Canyon, Saguaro, and Apache Lakes is warranted and necessary. That means these three lakes are now “affected” by the presence of quagga mussels and were listed in AIS Director’s Orders in May, 2016.



AGFD

AQUATIC INVASIVE SPECIES PROGRAM

UPDATED DIRECTOR'S ORDERS FOR 2016



2009

Aquatic Invasive Species Interdiction Act

Senate Engrossed House Bill

State of Arizona
House of Representatives Forty-ninth Legislature First Regular Session 2009

CHAPTER 77

HOUSE BILL 2157

AN ACT AMENDING SECTION 5-323, ARIZONA REVISED STATUTES; AMENDING TITLE 17, CHAPTER 2, ARIZONA REVISED STATUTES, BY ADDING ARTICLE 3.1; RELATING TO GAME AND FISH.

Be it enacted by the Legislature of the State of Arizona:

Section 1. Section 5-323, Arizona Revised Statutes, is amended to read:

17-255. Definition of aquatic invasive species

IN THIS ARTICLE, UNLESS THE CONTEXT OTHERWISE REQUIRES, "AQUATIC INVASIVE SPECIES":

1. MEANS ANY AQUATIC SPECIES THAT IS NOT NATIVE TO THE ECOSYSTEM UNDER CONSIDERATION AND WHOSE INTRODUCTION OR PRESENCE IN THIS STATE MAY CAUSE ECONOMIC OR ENVIRONMENTAL HARM OR HARM TO HUMAN HEALTH.
2. DOES NOT INCLUDE: (a) ANY NONINDIGENOUS SPECIES LAWFULLY OR HISTORICALLY INTRODUCED INTO THIS STATE FOR SPORT FISHING RECREATION (b) ANY SPECIES INTRODUCED INTO THIS STATE BY THE DEPARTMENT, BY OTHER GOVERNMENTAL ENTITIES OR BY ANY PERSON PURSUANT TO THIS TITLE.

17-255.01. Aquatic invasive species program; powers

A. **THE DIRECTOR MAY ESTABLISH AND MAINTAIN AN AQUATIC INVASIVE SPECIES PROGRAM.**

B. **THE DIRECTOR MAY ISSUE ORDERS:**

1. **ESTABLISHING A LIST OF AQUATIC INVASIVE SPECIES FOR THIS STATE.**
2. **ESTABLISHING A LIST OF WATERS OR LOCATIONS WHERE AQUATIC INVASIVE SPECIES ARE PRESENT AND TAKE STEPS THAT ARE NECESSARY TO ERADICATE, ABATE OR PREVENT THE SPREAD OF AQUATIC INVASIVE SPECIES WITHIN OR FROM THOSE BODIES OF WATER.**
3. **ESTABLISHING MANDATORY CONDITIONS AS PROVIDED IN SUBSECTION C OF THIS SECTION ON THE MOVEMENT OF WATERCRAFT, VEHICLES, CONVEYANCES OR OTHER EQUIPMENT FROM WATERS OR LOCATIONS WHERE AQUATIC INVASIVE SPECIES ARE PRESENT TO OTHER WATERS.**

APPROVED BY THE GOVERNOR JULY 10, 2009.

FILED IN THE OFFICE OF THE SECRETARY OF STATE JULY 10, 2009.

Current (2016)

AIS Director's Orders

DO1 AIS Species

quagga mussel
zebra mussel
rusty crayfish
red claw crayfish
New Zealand mudsnail
Didymo
giant salvinia
apple snail
Asian carp
whirling disease
LMB virus
All snakehead spp



DO2 AIS Affected Waters

Lake Mead
Lake Mohave
Lake Havasu
Lake Pleasant
CAP canals and endpoints
Lake Powell (Lees Ferry)
Canyon, Apache, Saguaro Lks
SRP canals

lower Verde River to confluence of
Verde and Salt down to Granite Reef
Recreation Area/Dam on lower Salt
River (Red Mtn Lake and lower
portions of Indian Bend Wash)
{Evelyn Hallman-CFP lake??}

AGFD DIRECTOR'S ORDER 3

MANDATORY REQUIREMENTS FOR WATERCRAFT MOVEMENT

DAY USERS

"Before leaving the vicinity of any listed water in Arizona..."

**Clean, Drain, and Dry
your Watercraft and
Equipment**



...or "Clean Your #@!!% Boat"...

AGFD DIRECTOR'S ORDER 3

MANDATORY REQUIREMENTS FOR WATERCRAFT MOVEMENT



DAY USERS

“Upon removing a WC from any listed waters in Arizona and PRIOR TO TRANSPORT:

- Remove all DRAINAGE plug(s)...”

Clean, Drain, and Dry

AGFD DIRECTOR'S ORDER 3

MANDATORY REQUIREMENTS FOR WATERCRAFT MOVEMENT

LONG TERM USERS OR MOORED BOATS

Mandatory Decontamination Procedures

“Before leaving the vicinity of the listed water/location...”

- Remove any clinging material {plants, animals, mud} from anchor, boat, motor, boat, equipment and trailer.
- Remove the plug (if applicable) and drain the water from the bilge, live-well and any other compartments that could hold water. Drain water from engine and engine cooling system(s).
- Physically remove all attached mussels from boat surfaces, motors, impellers, outdrives, rudders and through hull fittings.
- Keep the boat out of the water and ensure all areas of the boat are dry including bilge, through hull fittings and engine for a minimum of 18 consecutive days during the months of November through April and 7 consecutive days from May through October.
- Flush engine and cooling system and any other through hull fittings with hot water that exits at 140 degree Fahrenheit for 10 seconds.

AGFD DIRECTOR'S ORDER 3

MANDATORY REQUIREMENTS FOR WATERCRAFT MOVEMENT

LONG TERM USERS OR MOORED BOATS

Mandatory Decontamination Procedures

“WC...that have been in or on an AIS listed water for more than 5 days and
PRIOR TO TRANSPORT from that AIS listed water...”

- Remove any clinging material ...
- Remove ALL DRAINAGE Plug(s) and drain the water ...
- Physically remove all attached mussels
- Keep the boat out of the water and ensure all areas of the boat are dry ...18 consecutive days during the months of November through April and 7 consecutive days from May through October.
- “Where WC decontamination facilities exist (PRIVATE or GOVERNMENT)...”Flush engine and cooling system...with hot water ...
- “PRIOR TO TRANSPORT of WC to any other Arizona waters or out of state, the owner, operator, and/or transporter SHALL: complete and sign an AISBIR...”

AQUATIC INVASIVE SPECIES

TITLE 12-NATURAL RESOURCES

CHAPTER 4-GAME AND FISH COMMISSION

ARTICLE 11-AQUATIC INVASIVE SPECIES

R12-4-1101 & R12-4-1102

*“Upon removing a watercraft....
remove any **PLUG** or other barrier
that prevents water drainage...”*



AGFD

AQUATIC INVASIVE SPECIES PROGRAM

DON'T MOVE A MUSSEL

NOW IT'S THE LAW

Clean, Drain and Dry your BOAT

Follow these steps to inspect and decontaminate your watercraft or equipment of any possible "hitchhikers" (according to AIS Director's Orders 1, 2 and 3)

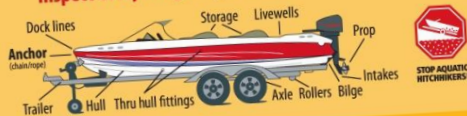
DAY USERS (boat in water for 5 days or less)

- 1. Clean** — Remove all mud, plants and animals from every part of your boat, trailer and equipment, including your anchor.
- 2. Drain** — **Pull the plug.** Before you leave the area, eliminate all water from your boat, including its livewells, ballast and engine-cooling water.
- 3. Dry** — Allow time for your boat to completely dry before you launch in any other waters. This amount of time may vary depending on humidity and temperature. Your boat's dry time should be at least 5 days.

LONG TERM OR MARINA-BASED USERS (boat in water for 6 days or more)

- 4. Decontaminate** — Clean your watercraft with hot, high pressure water to remove all invasive species, such as quagga.
- 5. Desiccate** — After decontamination leave your dried boat out of the water for 7 days in summer and 18 days in winter.

Inspect everything: if it gets wet, it could harbor mussels.



It's the right thing to do



wildlife.ca.gov • azgfd.gov/ais • ndow.org



BOATERS: REMEMBER TO ALWAYS PULL YOUR BOAT PLUG WHEN LEAVING ... IT'S THE LAW.

A.R.S. §17-250; AIS #12-4-1102

