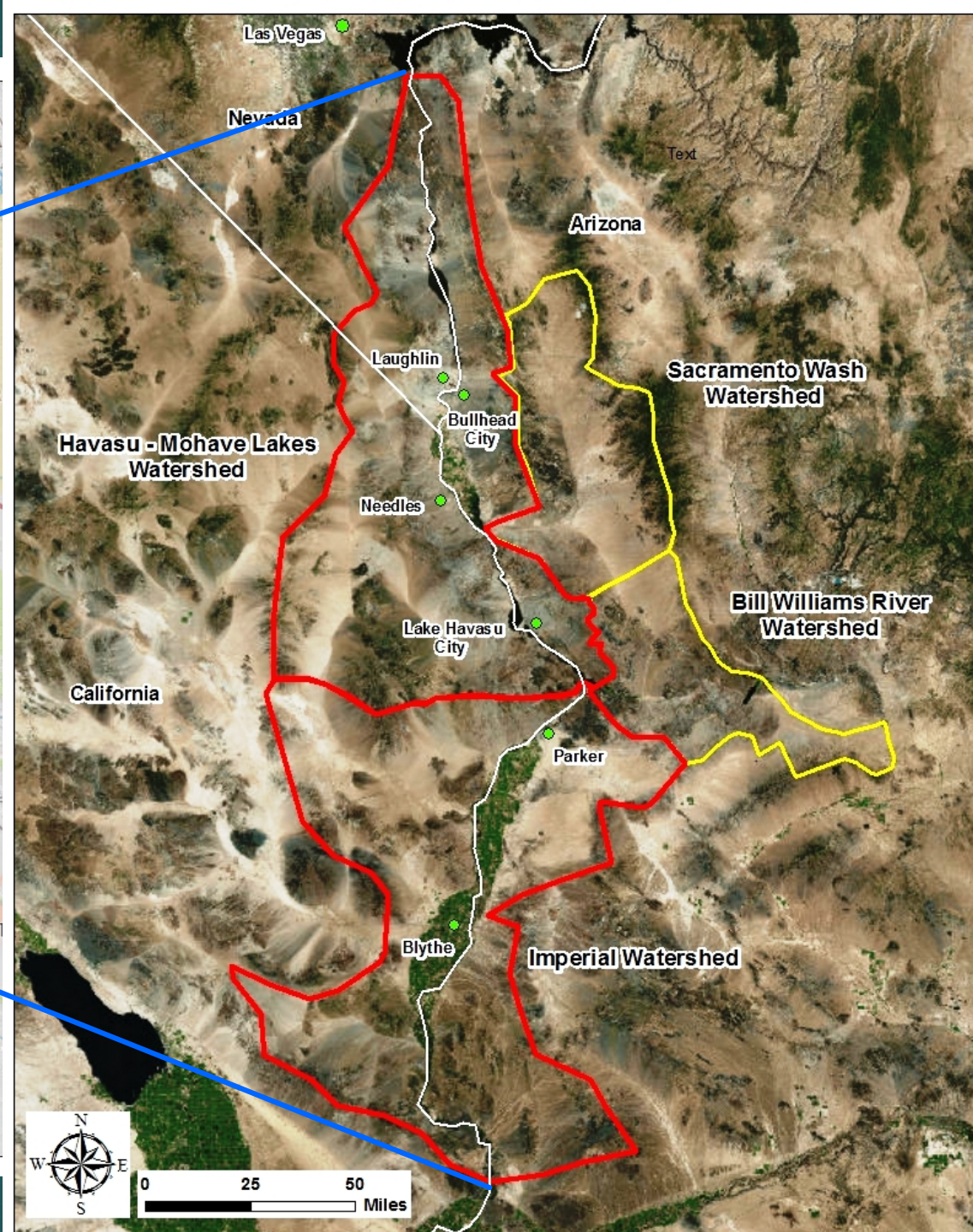
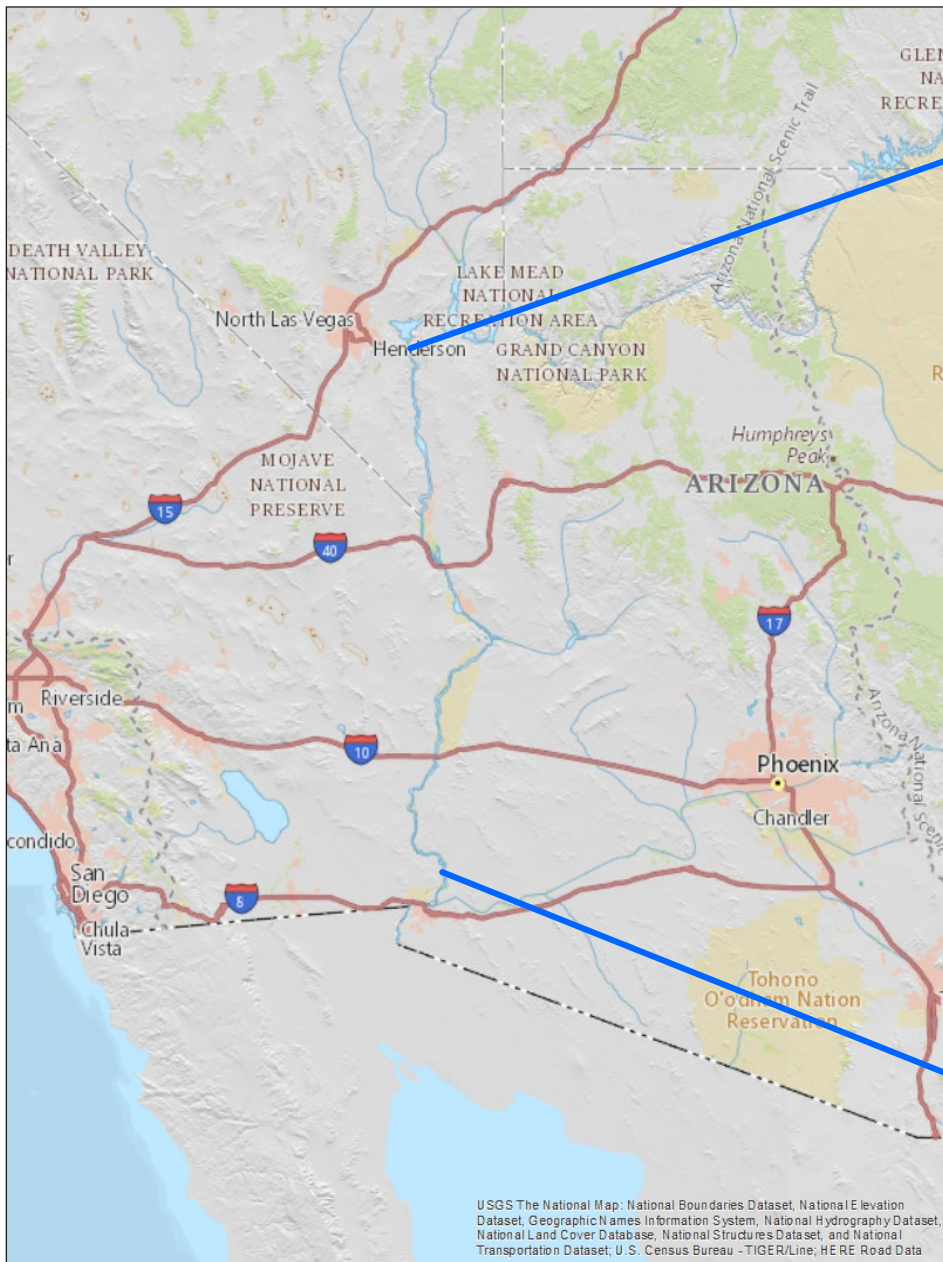




Lower Colorado River Watershed Management Plan

**The
covered
area is
from
Hoover
Dam to
the south
end of
the
Imperial
National
Wildlife
Refuge.**



The plan is in current development through a WaterSMART Cooperative Watershed Management grant to the Clean Colorado River Sustainability Coalition (CCRSCo).

CCRSCo is a watershed group of local and regional interests with the focus on Lower Colorado River water quality.

Although the EPA and the Arizona Department of Environmental Quality have general versions of watershed plans, they are not current and not as detailed as this management plan intends to be.

Emphasis on plan development in relation to EPA WMP certification.



Priority Issues

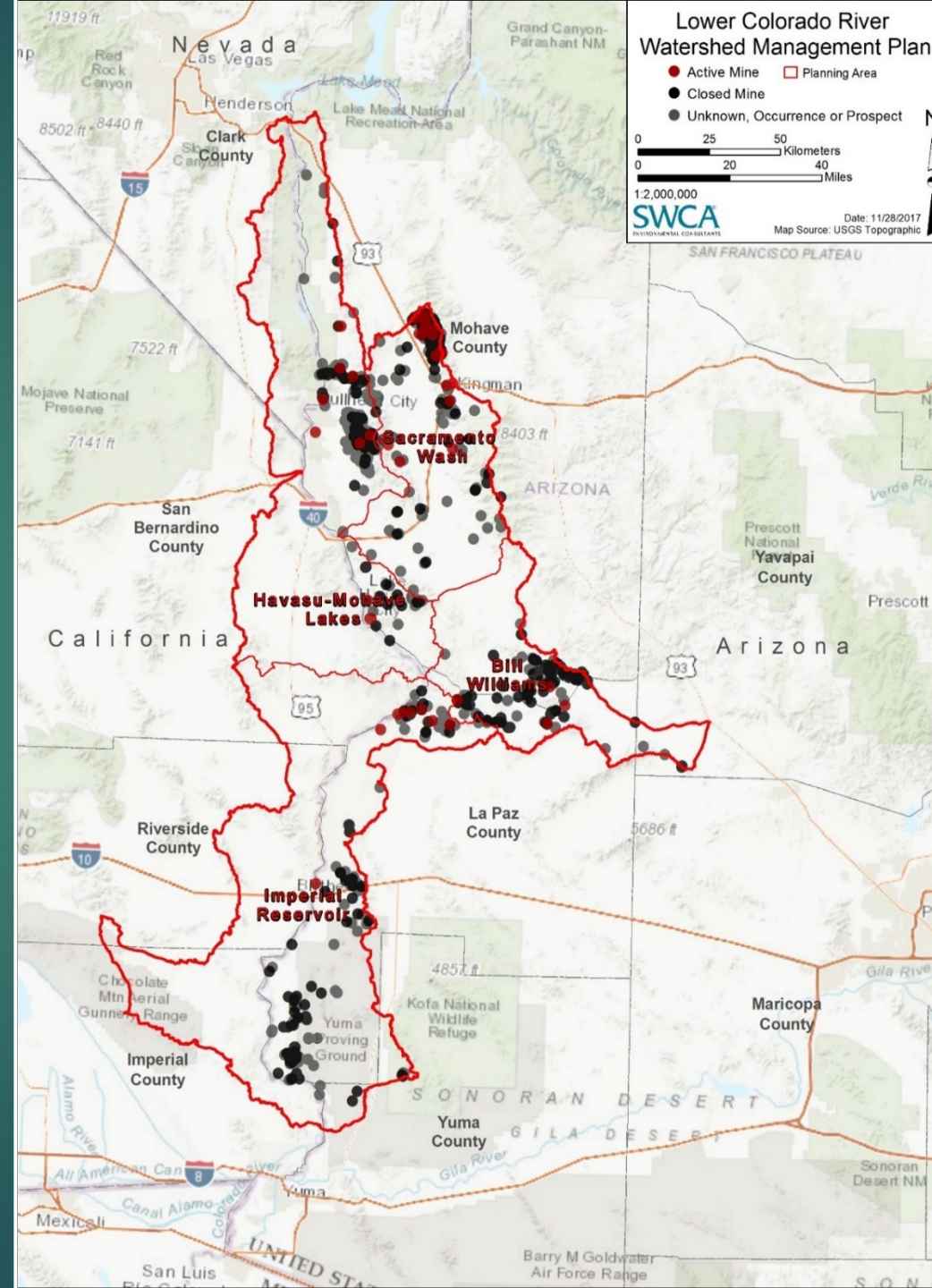


- AQUATIC INVASIVE SPECIES
- MINING
- CYANOBACTERIA BLOOMS
- HEXAVALENT CHROMIUM
- POTENTIAL HYDROCARBON LEAKS/SPILLS
- LOWER COLORADO RIVER DIVERSIONS
- DROUGHT
- AGRICULTURAL RUNOFF

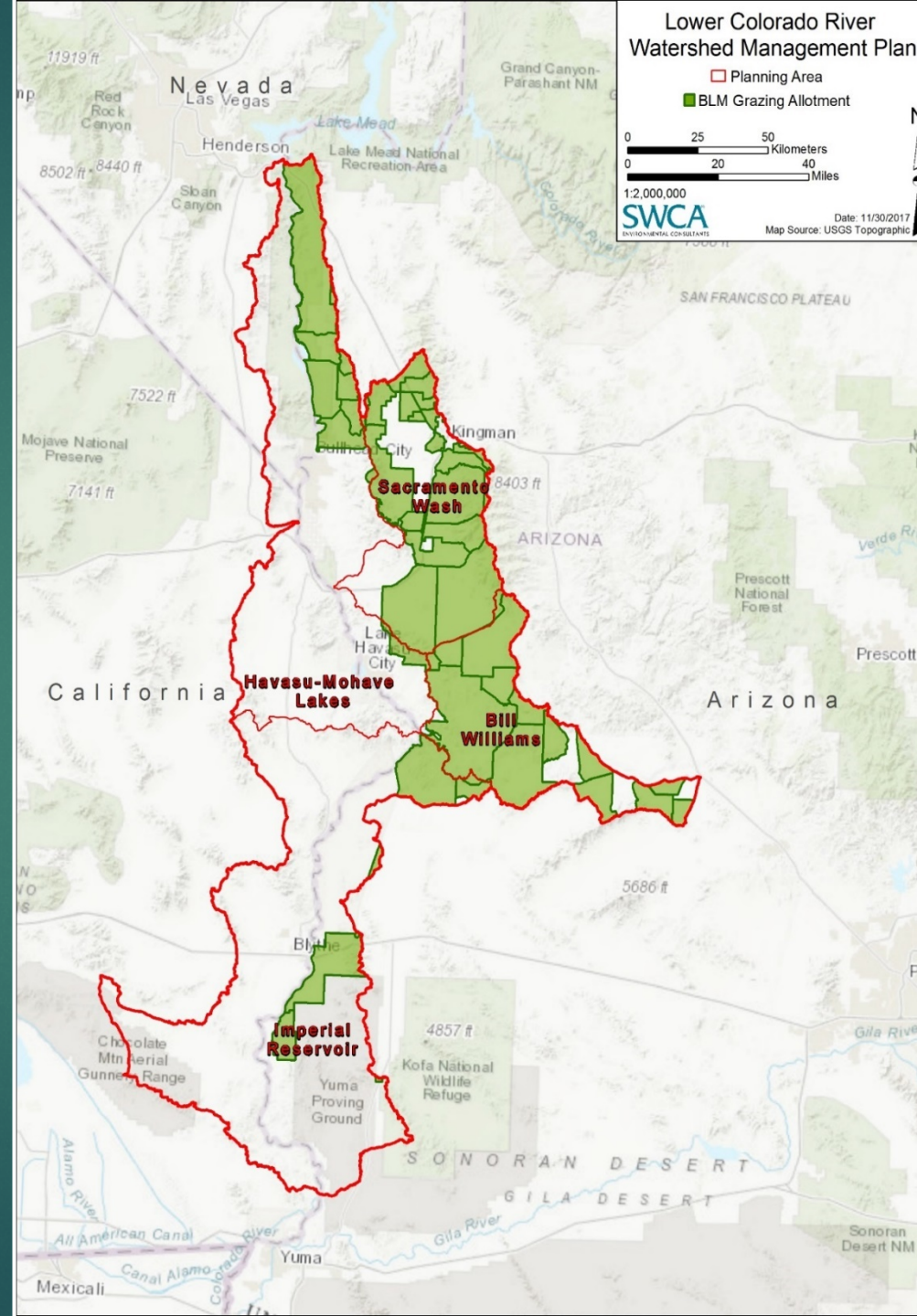
OTHER ISSUES

- RIVER SALINITY AND SEDIMENTS
- HABITAT DEGRADATION FROM BURROS, FERAL PIGS, AND CATTLE
- LANDFILL LEACHING, SEPTIC TANKS, URBAN RUNOFF
- GROUNDWATER QUALITY CECs IN RIVER AND GROUNDWATER

Known Active and Inactive Mines within the Plan Area



BLM Land with Grazing Rights



WMP Plan Development and Implementation

Develop Management Objectives and Indicators

**Development of Best Management Practices and
Implementation of Program Design**

**Develop Interim Milestones and Schedule for Implementing
Identified Management Measures.**

Monitoring / Tracking Effectiveness



The WMP is scheduled for completion in September 2018.

Post WMP work will focus on implementation efforts and to expand the WMP to the Southern International Border.