

Water Hyacinth and Water Lettuce in Ferguson Lake; Lessons in Why Not Every Potential AIS Becomes Invasive

David Walker (Univ. of AZ)

Russ Engel (AGFD)

Water Hyacinth

Eichhornia crassipes



Water Lettuce

Pistia stratiotes



03/21/2016 Warden James Nemlowill (California) was contacted by SURCOM (Southern Communication Center) with a CalTIP for the Colorado River. The reporting party stated he was out fishing in Ferguson Lake and saw Water Hyacinth.



Approx N Extent

High Conc Area

High Conc Area

Approx S Extent

Ferguson Lake

Martinez Lake

Martinez Lake • Martinez Lake

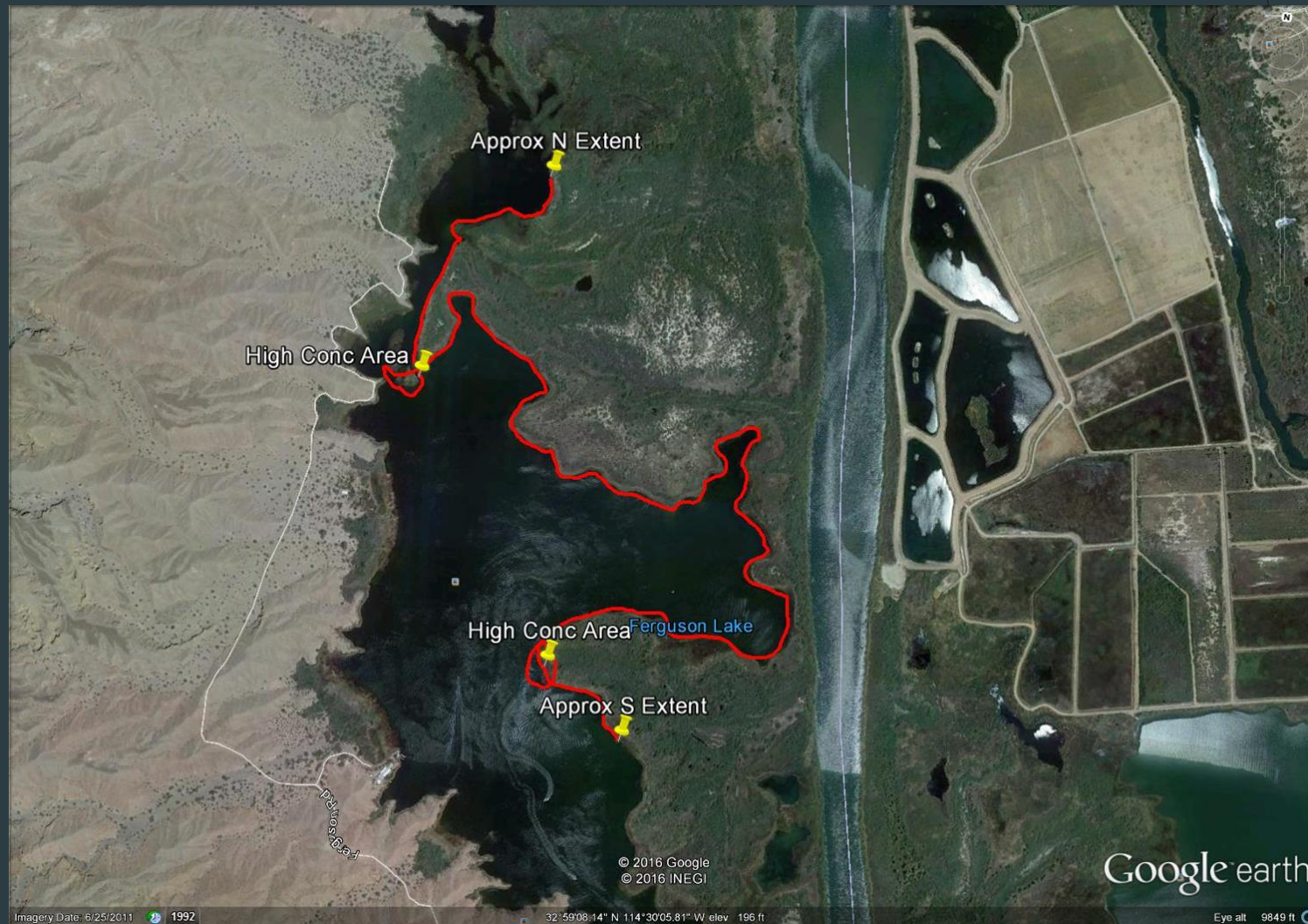
Castle Dome Landing • Castle Dome Landing

© 2016 Google
© 2016 INEGI

Google earth



- ▶ 03/22 and 3/24/2016: Russ Engel (AGFD) and Warden Nemlowil (California), using BLM boats, collected water hyacinth and also noticed water lettuce.
- ▶ Approximately one 40 gallon trash bag full of plant material collected.





03/22/2016



03/24/2016



03/28/2016

Subsequent Surveys

- ▶ 03/31/2016: Two water hyacinth at the point that had the highest concentration.
- ▶ 04/11/2016: Four water hyacinth and one water lettuce at various locations along the shore line.
- ▶ 04/19/2016: Surveyed from Hidden Shores to Ferguson. No plants found.
- ▶ 04/26/2016: Three plants found at the point with the highest concentration. Survey from Ferguson to Taylor Lake - No plants found.
- ▶ 06/01/2016: No plants found.
- ▶ 07/15/2016: No plants found.

Habitat Requirements

- ▶ Unknown if either hyacinth or water lettuce would have exploded in numbers in the LCR as it has elsewhere.
 - ▶ Water Quality Requirements
 - ▶ UV Degradation
 - ▶ Grazing Pressure
 - ▶ Waterfowl, fish, moths, weevils.
- ▶ However, all of these pressures have existed elsewhere hyacinth/water lettuce populations have exploded.

Speed and Multi-agency Coordination

- ▶ A water hyacinth coordination meeting held.
- ▶ Plans for physical removal finalized.
- ▶ Contingencies discussed.
 - ▶ Biological and chemical control.
- ▶ *Continued surveillance and coordinated planning and efforts have tangible effects and are of great value.*