



# Recent Fire Events in Arizona Rangelands

---

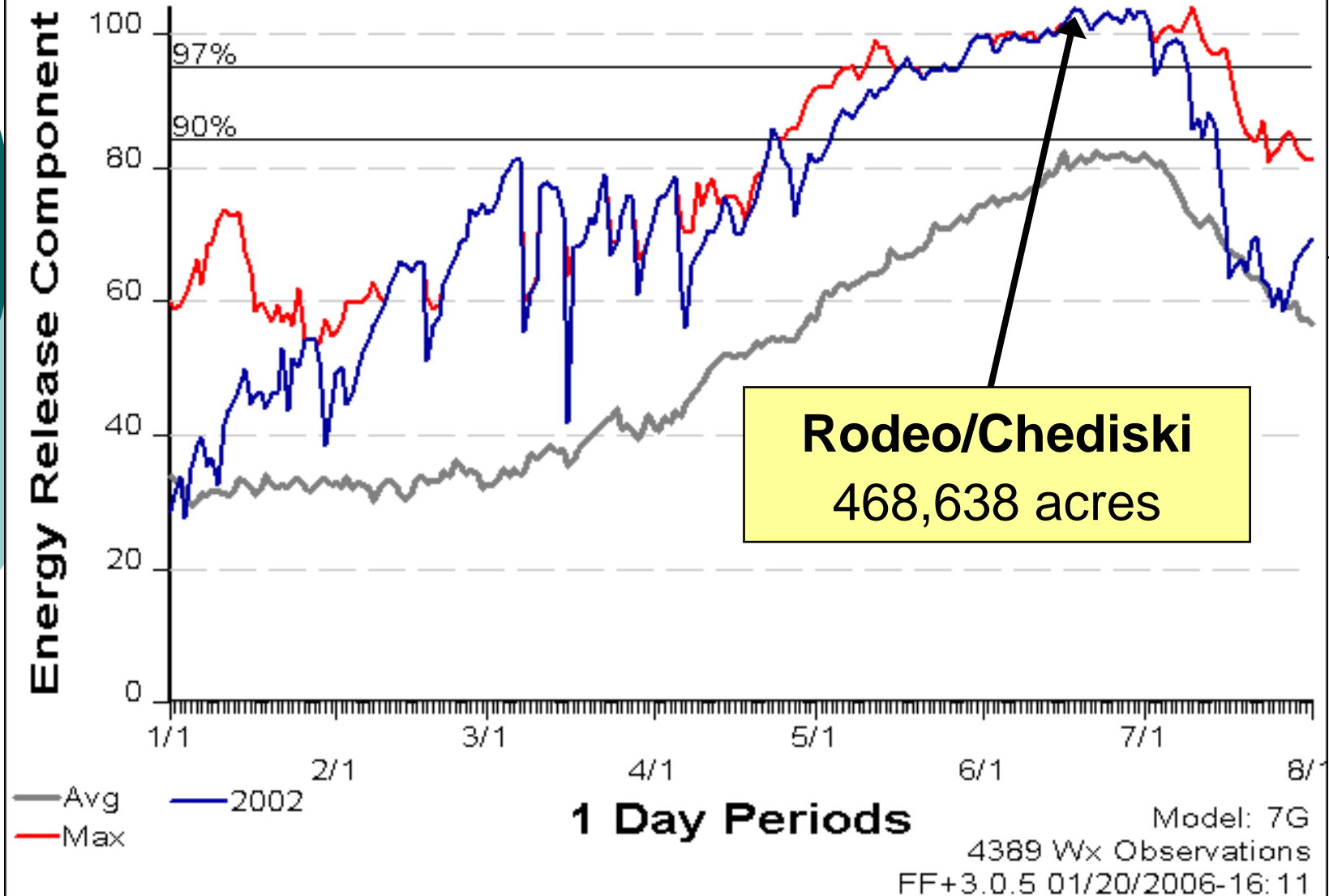
Jeff Whitney-USFWS  
AZ Ecological Services Field Office

# LARGE FIRES

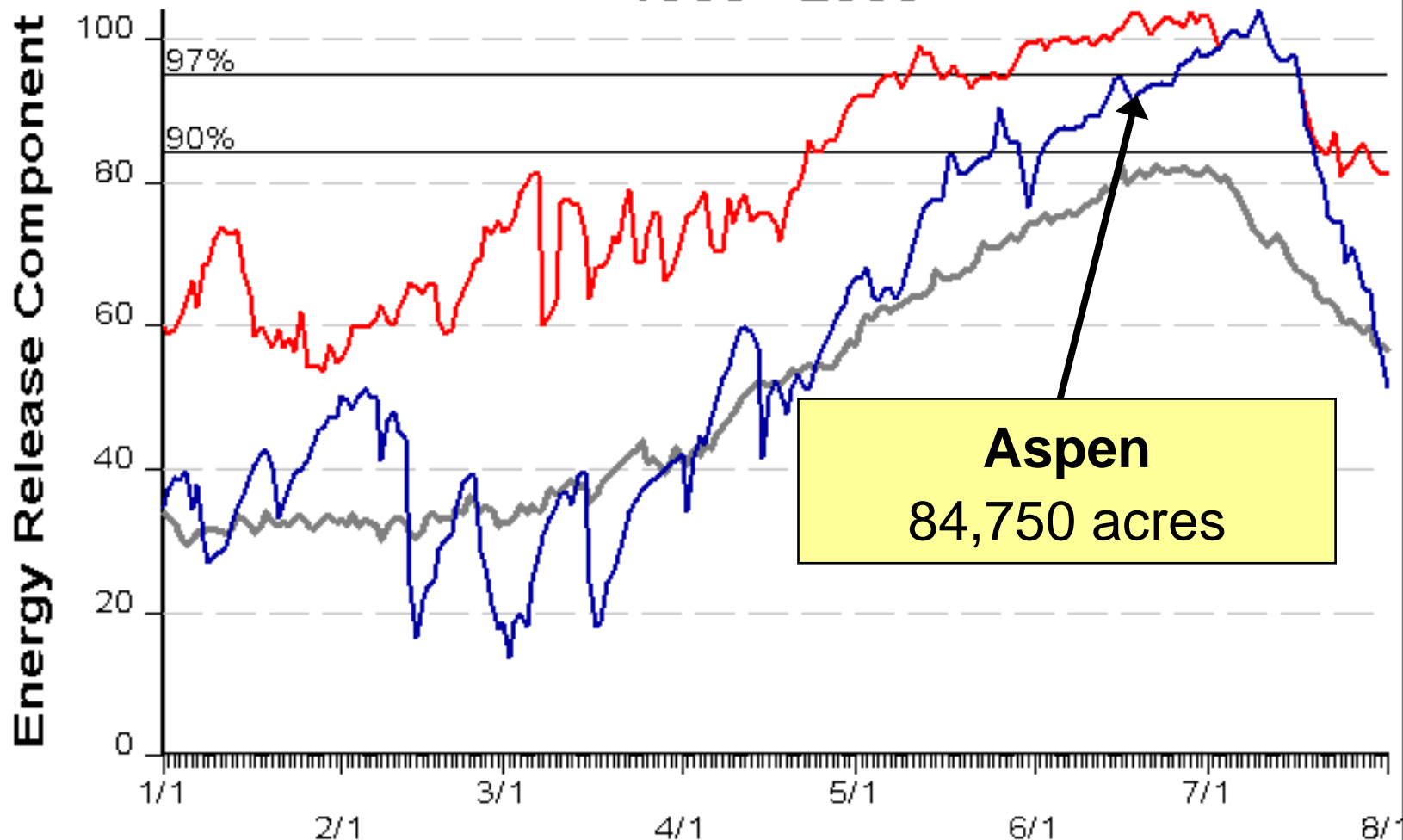
## ARIZONA (1990 - 2004)

	Fire Name	Kind	State	Agency	Zone	Unit of Origin	Start Date	Contain Date	Cause	Final Acres
1	Rodeo/Chediski	WF	AZ	BIA	WMZ	FTA	06/18/02	07/07/02	H	468,638
2	Willow	WF	AZ	FS	CWZ	TNF	06/24/04	07/17/04	L	119,500
3	Aspen	WF	AZ	FS	SEZ	CNF	06/17/03	07/15/03	H	84,750
4	Lone	WF	AZ	FS	CAZ	TNF	04/27/96	05/06/96	H	61,370
5	Bridger Complex	WF	AZ	FS	GCZ	KNF	06/20/96	07/26/96	L	53,503
6	Ryan	WF	AZ	FS	SEZ	CNF	04/29/02	05/04/02	H	38,000
7	Bullock	WF	AZ	FS	SEZ	CNF	05/21/02	06/10/02	U	30,563
8	Nuttall Complex	WF	AZ	FS	SEZ	CNF	06/26/04	07/25/04	L	29,400
9	Dude	WF	AZ	FS	CWZ	TNF	06/25/90	07/09/90	L	28,480
10	Rattlesnake	WF	AZ	FS	SEZ	CNF	06/28/94	08/05/94	L	27,500
11	Perkins Complex	WF	AZ	BLM	CWZ	PHD	06/27/94	06/30/94	L	25,946
12	Kinishba	WF	AZ	BIA	WMZ	FTA	07/13/03	08/01/03	L	24,734
13	Piety Complex	WF	AZ	ST	SEZ	A3S	06/15/93	06/25/93	L	24,580
14	Redington Complex	WF	AZ	ST	SEZ	A3S	06/28/94	07/24/94	L	20,725

# SIG - swa-az-station 1985 - 2006



# SIG - swa-az-station 1985 - 2006



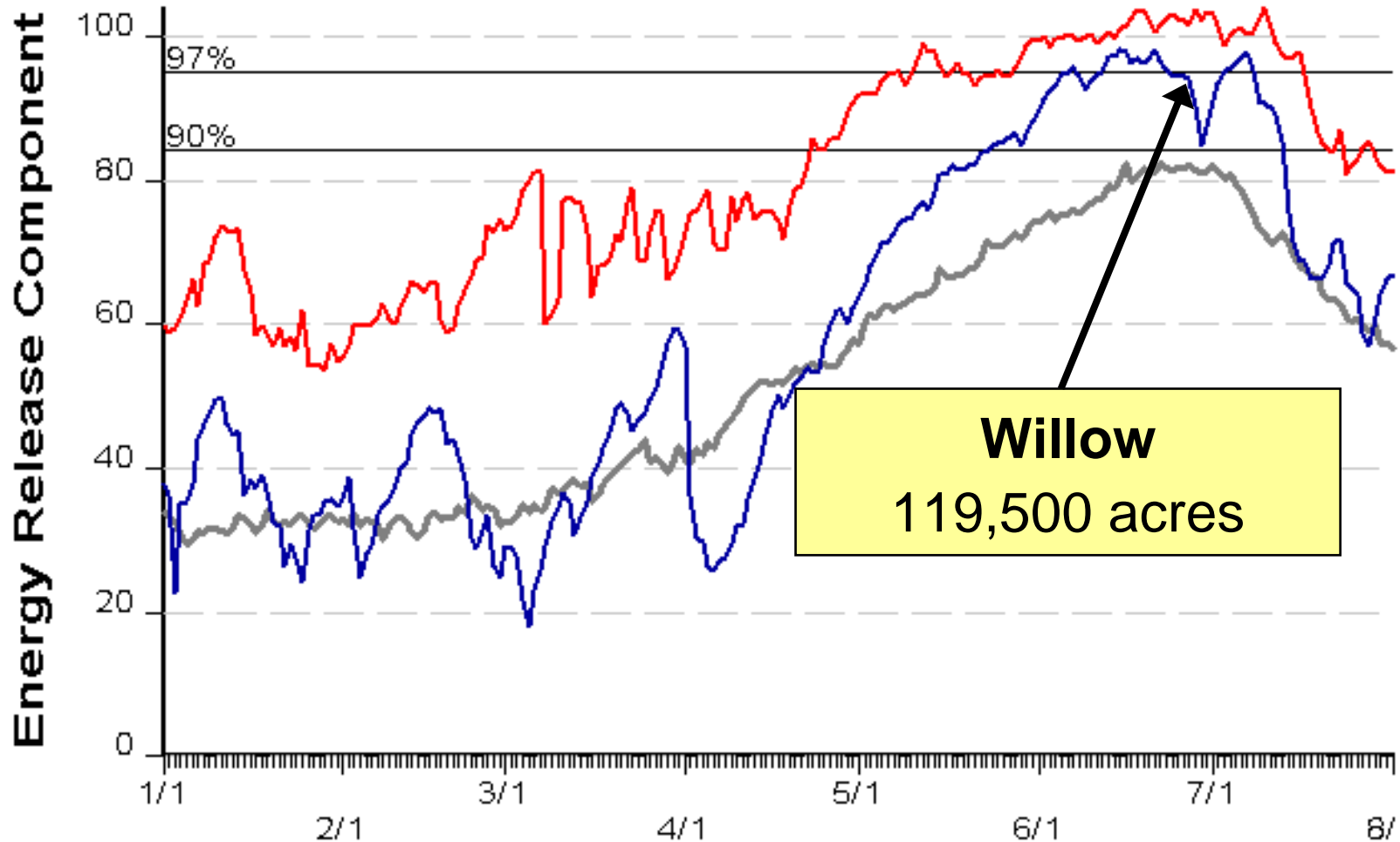
**Aspen**  
84,750 acres

**1 Day Periods**

— Avg  
— 2003  
— Max

Model: 7G  
4389 Wx Observations  
FF+3.0.5 01/20/2006-16:11

# SIG - swa-az-station 1985 - 2006



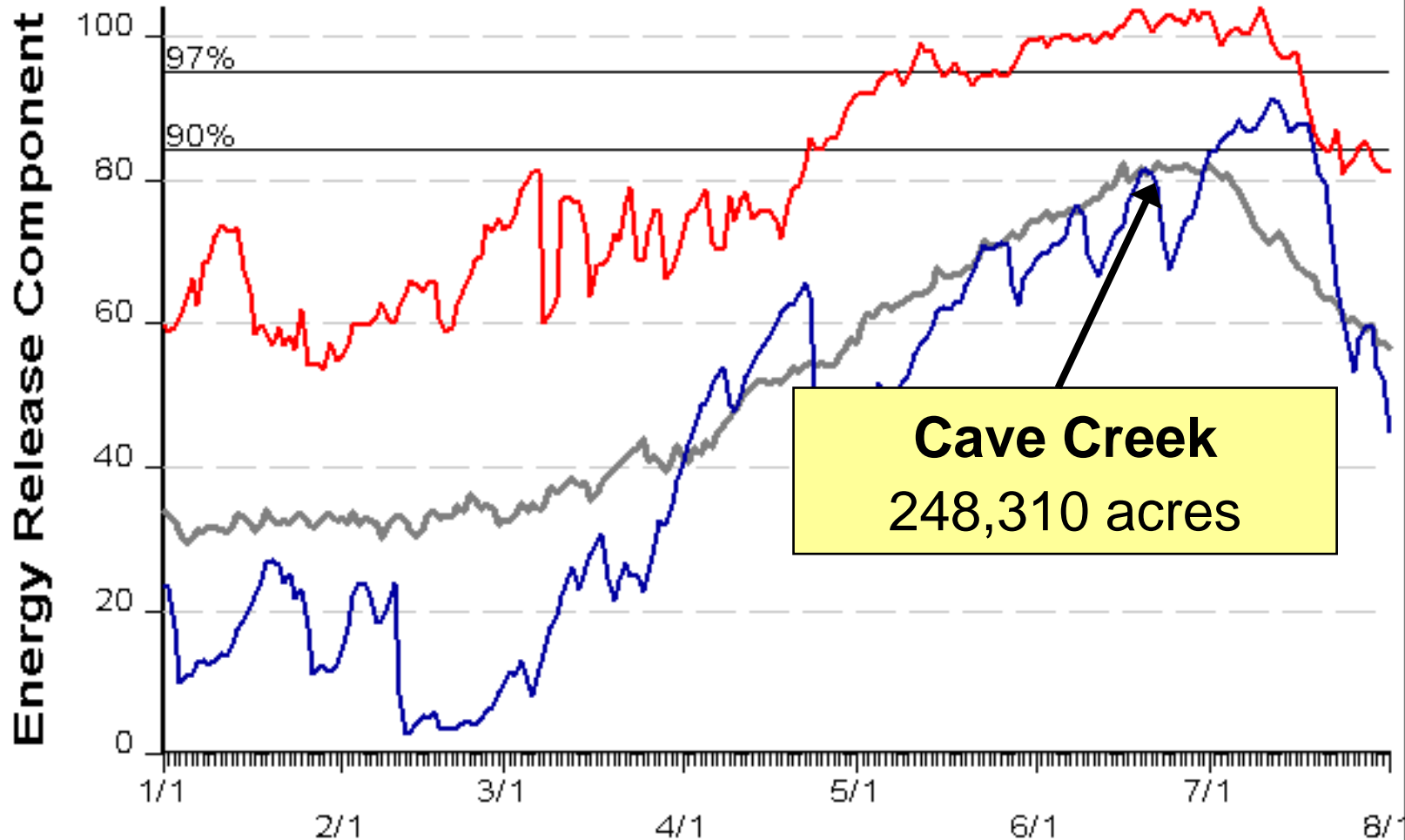
**Willow**  
119,500 acres

— Avg    — 2004  
— Max

**1 Day Periods**

Model: 7G  
4389 Wx Observations  
FF+3.0.5 01/20/2006-16:11

# SIG - swa-az-station 1985 - 2006



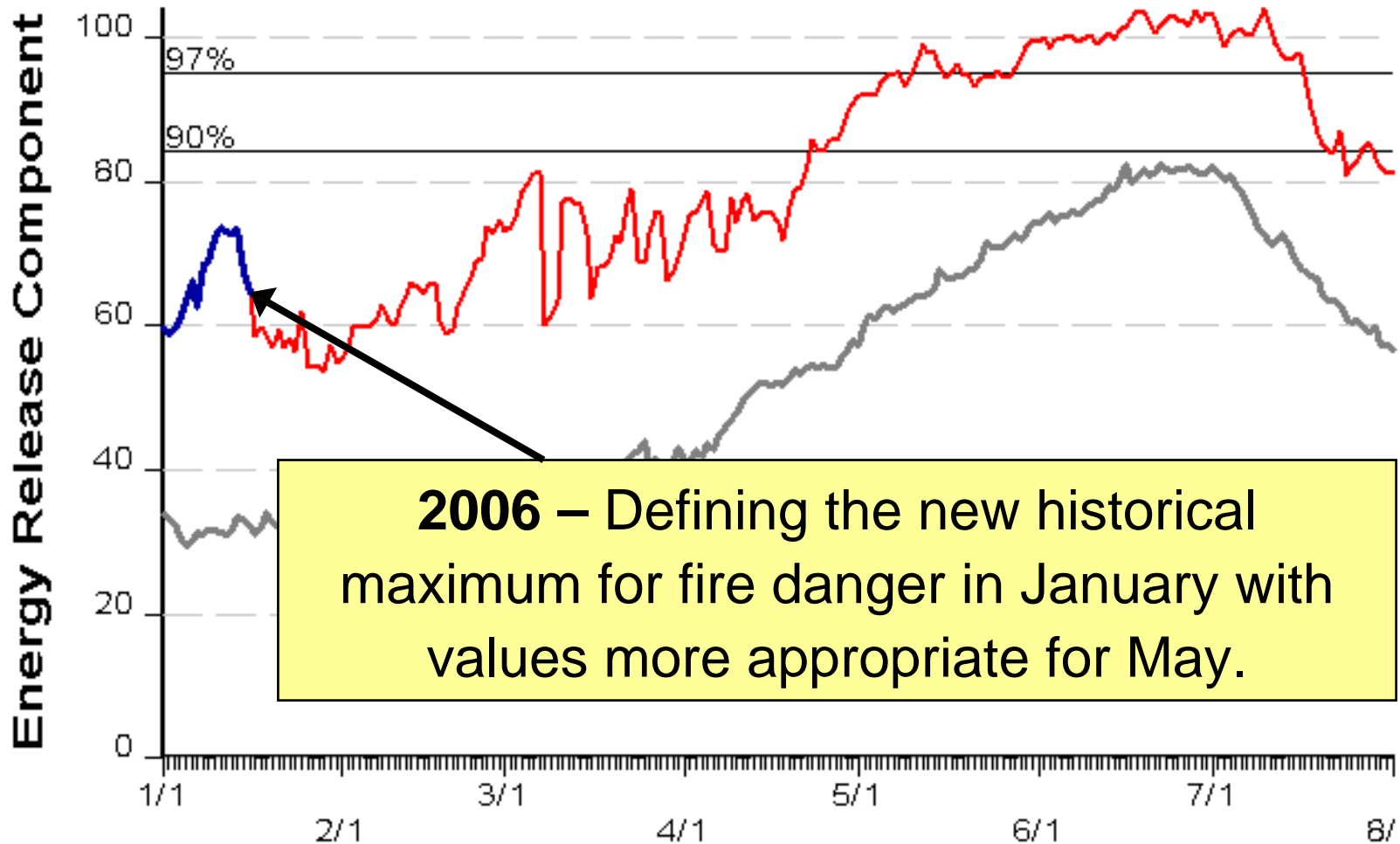
**Cave Creek**  
248,310 acres

— Avg  
— 2005  
— Max

**1 Day Periods**

Model: 7G  
4389 Wx Observations  
FF+3.0.5 01/20/2006-16:11

# SIG - swa-az-station 1985 - 2006



**2006** – Defining the new historical maximum for fire danger in January with values more appropriate for May.



# Invasive Species

---

- Invasive Species have been present for many years;
- New Invasive Species are becoming a greater issue;
- Climate affects the presence and abundance of invasives;
- Historic drought continues



# Fire Mgt Strategy and Tactics

---

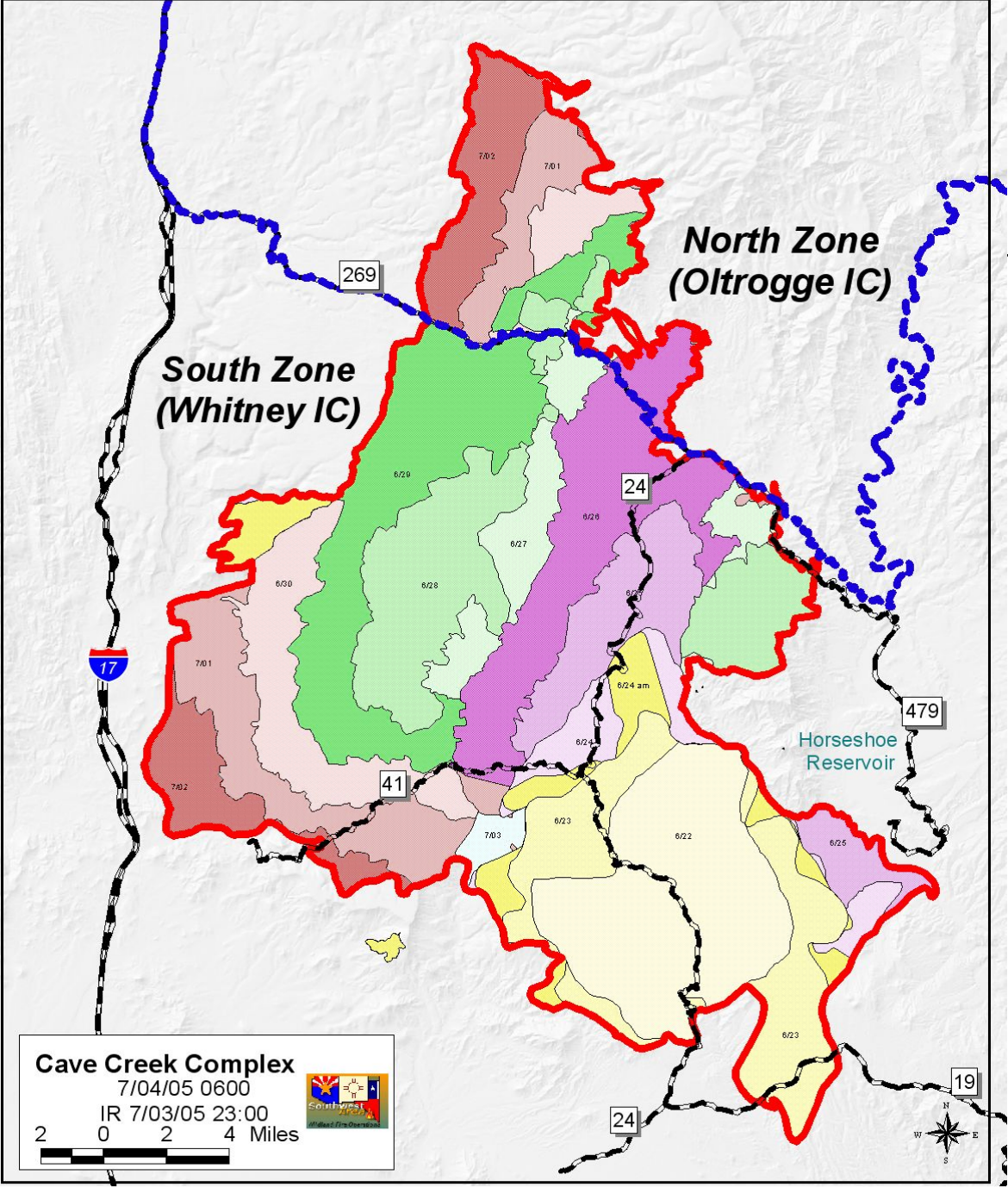
- Traditional vs. Emerging Strategies

- Traditional tools

- Aircraft
- Ground crews
- Engines
- Firing Techniques (fighting fire with fire)

So...not much has changed...

But...fires have gotten bigger and of greater interest...some is related to Climate



**Cave Creek Complex**  
7/04/05 0600  
IR 7/03/05 23:00  
2 0 2 4 Miles

