


SAN PEDRO RIVER WATERSHED

11/30/2007

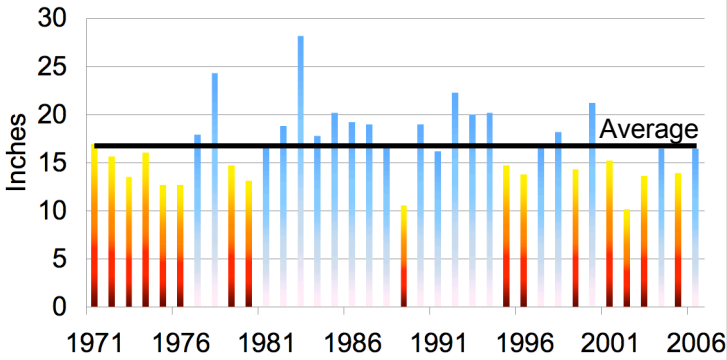
This fact sheet is intended to provide an overview of drought-related trends in your area. The map (right) shows the watershed corresponding with the location you selected for your water system. The graphs below show average historic trends for three drought-related factors: precipitation, temperature and population. Charts are derived from official data from the national Weather Service, Arizona State Climate Office, and U.S. Census Bureau.



 Find additional detailed information about your watershed and groundwater basin in the Arizona Water Atlas:

http://www.azwater.gov/dwr/Content/Find_by_Program/Rural_Programs/content/water_atlas/default.htm

TOTAL ANNUAL PRECIPITATION: SAN PEDRO RIVER

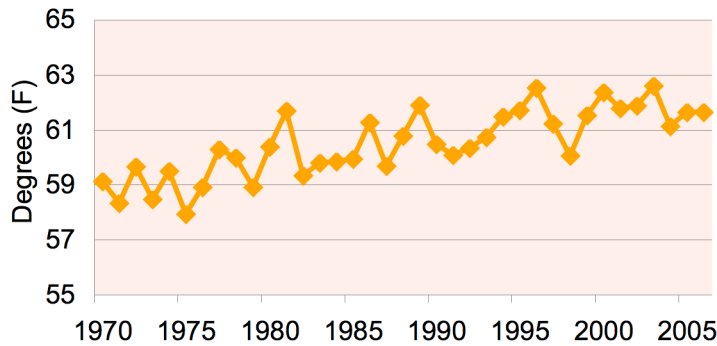


More information at <http://geography.asu.edu/climatology/>

The interaction between temperature and precipitation variability have created complex drought conditions across Arizona in recent years. Below-average precipitation has impacted water supplies, while above-average temperatures have intensified drought impacts across the state. Increasing population has also placed an increasing demand on surface and groundwater resources. Local trends in precipitation, temperature and population can provide guidance in anticipating future conditions and developing informed drought preparedness plans. Stay informed of conditions in your watershed by checking the state's monthly Drought Monitor Reports:

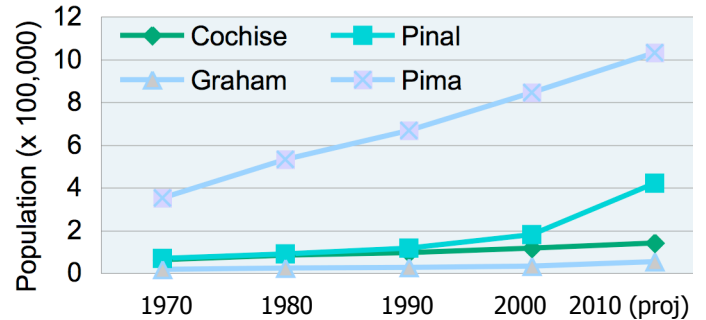
<http://www.azwater.gov/dwr/drought/droughtstatus.html>

ARIZONA ANNUAL AVERAGE TEMPERATURE



More information at <http://www.wrcc.dri.edu/spi/divplot1map.html>

CHANGES IN POPULATION FOR COUNTIES IN THE SAN PEDRO RIVER WATERSHED



More information at <http://factfinder.census.gov/>

<http://droughtplan.arid.arizona.edu>

