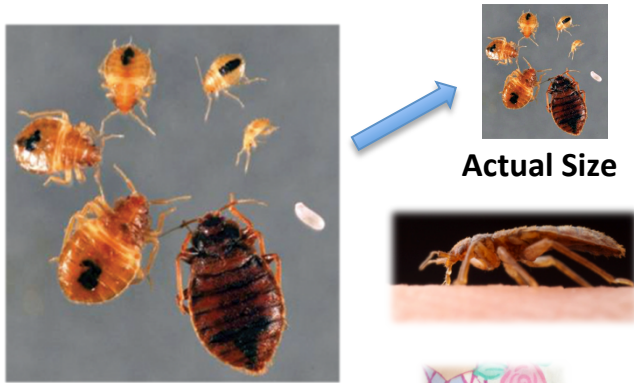


Bed Bugs!

Know the Enemy



Actual Size

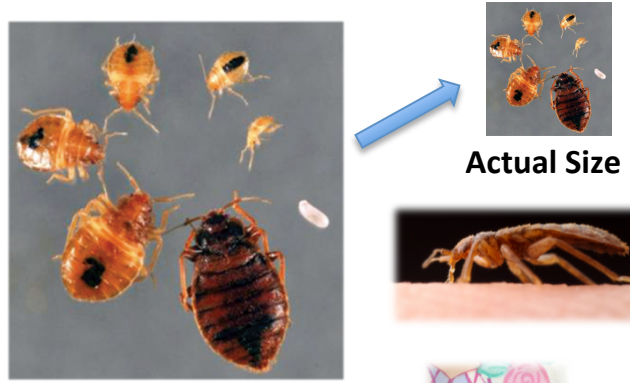
Signs of Bed Bugs



Integrated Pest Management (IPM) is the most effective way to eliminate bed bugs.

Bed Bugs!

Know the Enemy



Actual Size

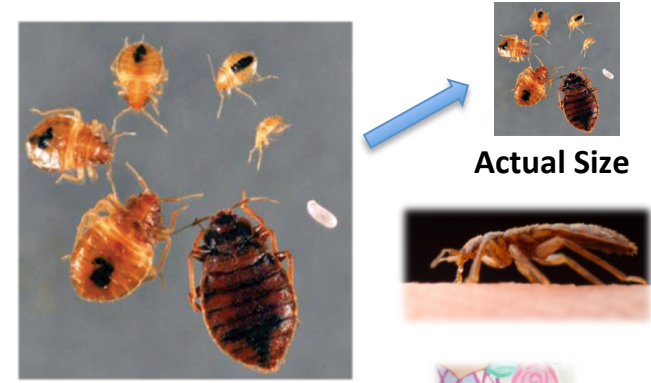
Signs of Bed Bugs



Integrated Pest Management (IPM) is the most effective way to eliminate bed bugs.

Bed Bugs!

Know the Enemy



Actual Size

Signs of Bed Bugs



Integrated Pest Management (IPM) is the most effective way to eliminate bed bugs.



Prevention carefully inspect second-hand items before bringing them home.

Non-Chemical Methods are becoming primary methods used in combination with pesticides.

Chemical Methods licensed pest management professionals have specialized products, equipment and expertise.

For information on bed bugs and IPM, please view
<http://cals.arizona.edu/apmc/public-health-IPM>
<http://www.epa.gov/bedbugs>



COLLEGE OF AGRICULTURE
AND LIFE SCIENCES
COOPERATIVE EXTENSION
Arizona Pest Management Center



Prevention carefully inspect second-hand items before bringing them home.

Non-Chemical Methods are becoming primary methods used in combination with pesticides.

Chemical Methods licensed pest management professionals have specialized products, equipment and expertise.

For information on bed bugs and IPM, please view
<http://cals.arizona.edu/apmc/public-health-IPM>
<http://www.epa.gov/bedbugs>



COLLEGE OF AGRICULTURE
AND LIFE SCIENCES
COOPERATIVE EXTENSION
Arizona Pest Management Center



Prevention carefully inspect second-hand items before bringing them home.

Non-Chemical Methods are becoming primary methods used in combination with pesticides.

Chemical Methods licensed pest management professionals have specialized products, equipment and expertise.

For information on bed bugs and IPM, please view
<http://cals.arizona.edu/apmc/public-health-IPM>
<http://www.epa.gov/bedbugs>



COLLEGE OF AGRICULTURE
AND LIFE SCIENCES
COOPERATIVE EXTENSION
Arizona Pest Management Center