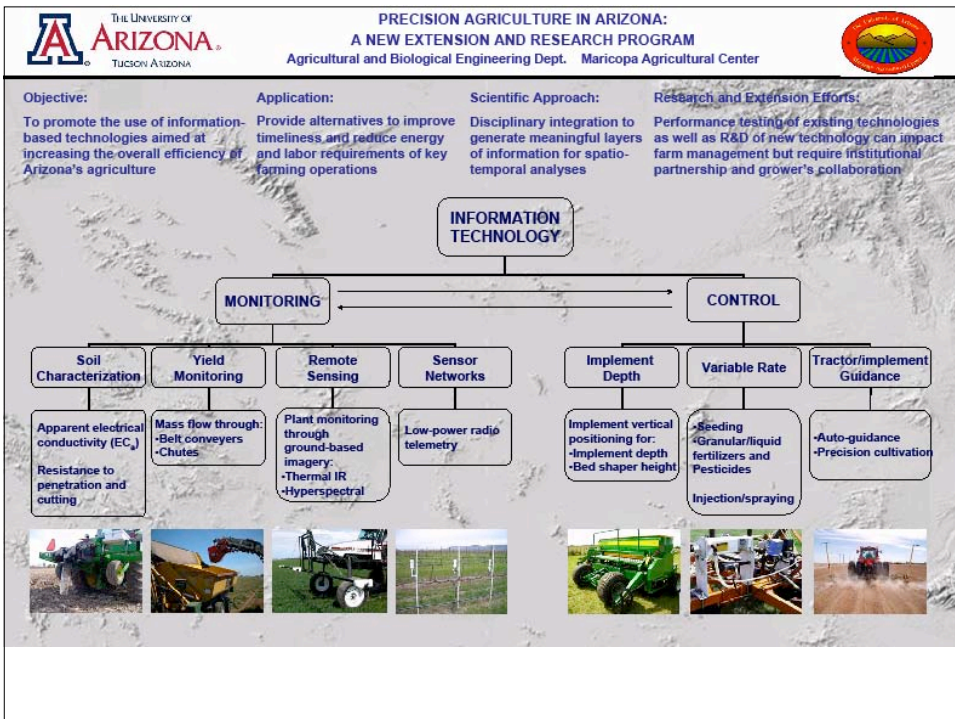


Precision Agriculture in Arizona: A New Research and Extension Program



- Pedro Andrade, Specialist (Aug, 2007)
- John Heun, Research Specialist (Feb, 2008)
- Instrumentation lab at MAC
- Engineering shop at MAC

1. **Plant** characterization through yield monitoring and continuous seasonal measurements of plant height and reflectance and temperature of plant canopy

1. **Plant** characterization through yield monitoring and continuous seasonal measurements of plant height and reflectance and temperature of plant canopy
2. Effect of **soil** variability on plant development through continuous measurement of soil electrical/mechanical response and point soil sampling

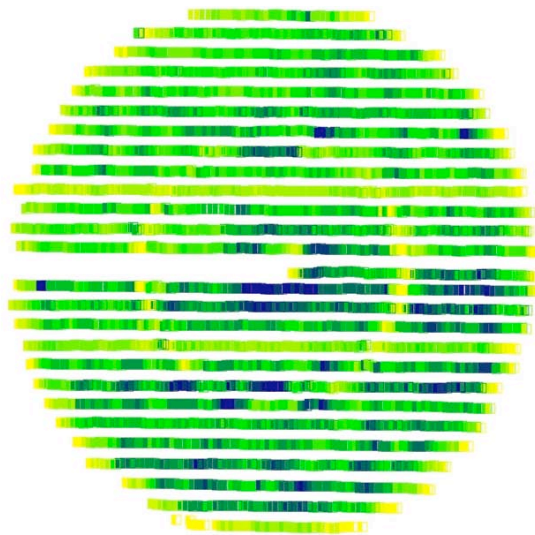
1. **Plant** characterization through yield monitoring and continuous seasonal measurements of plant height and reflectance and temperature of plant canopy
2. Effect of **soil** variability on plant development through continuous measurement of soil electrical/mechanical response and point soil sampling
3. Tractor/implement positioning control (**machine**) to enhance precision in row operations

1. **Plant** characterization through yield monitoring and continuous seasonal measurements of plant height and reflectance and temperature of plant canopy
2. Effect of **soil** variability on plant development through continuous measurement of soil electrical/mechanical response and point soil sampling
3. Tractor/implement positioning control (**machine**) to enhance precision in row operations
4. **Plant/soil/machine** system integration through variable rate technology for production inputs

1. **Plant** characterization through yield monitoring and continuous seasonal measurements of plant height and reflectance and temperature of plant canopy
2. Effect of **soil** variability on plant development through continuous measurement of soil electrical/mechanical response and point soil sampling
3. Tractor/implement positioning control (**machine**) to enhance precision in row operations
4. **Plant/soil/machine** system integration through variable rate technology for production inputs
5. **Resource conservation** in the form of water, soil, energy etc.



Cotton yield monitor. MAC 2007



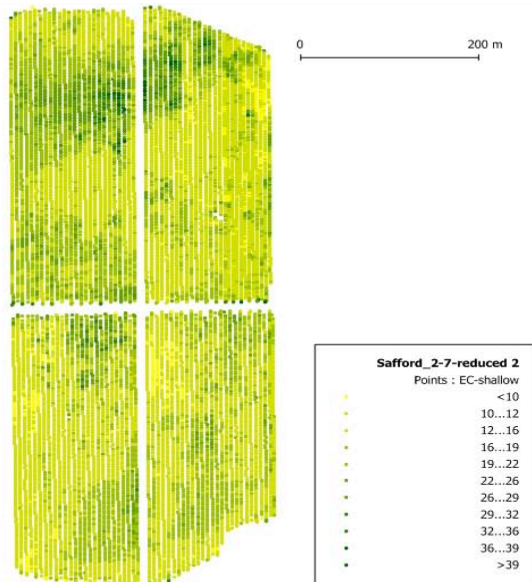
YieldPivot_10-31 2	
Points : kg	
Yellow	<0.16798
Light Green	0.16798...0.34958
Green	0.34958...0.50394
Dark Green	0.50394...0.6356
Teal	0.6356...0.7491
Blue-Teal	0.7491...0.89438
Blue	0.89438...1.03966
Dark Blue	1.03966...1.18494
Very Dark Blue	1.18494...1.33022
Black	1.33022...1.48458
Dark Blue	>1.48458

2007 Yield Data. Field 06 at MAC. 2 acre of Cotton



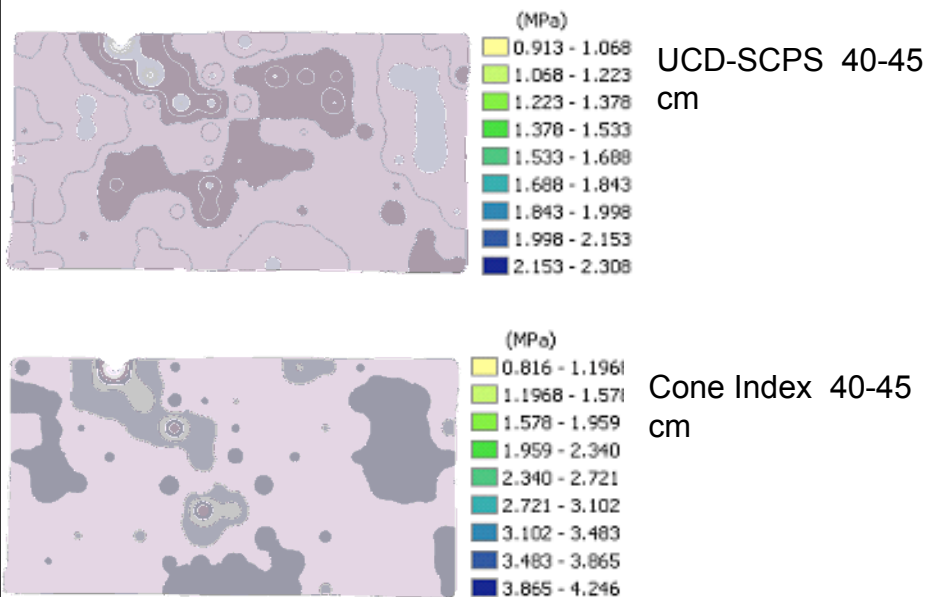
Veris sensor. Apparent Electrical Conductivity (EC_a)

Soil Electrical Survey. 20 ha field in Safford, AZ





UCDavis soil compaction profile sensor



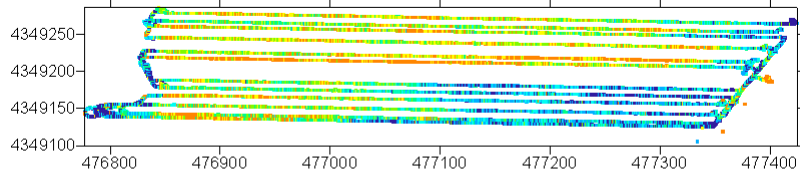


Listing rows with Auto-guidance system





Relative Reflectance Ratio, GreenSeeker Sensor 2



- Collaboration is a key component of the PA program

- Collaboration is a key component of the PA program
- Research and development of VRT will follow after adequate characterization of plant and soil

- Collaboration is a key component of the PA program
- Research and development of VRT will follow after adequate characterization of plant and soil
- Research driven efforts so far, Where is Extension?