

Stop-School-Pests: National Standardized School IPM Training and Certification/Certificate Program

September 23-25, 2014

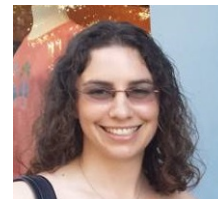
Texas A&M AgriLife Research & Extension Center, 17360 Coit Road, Dallas, Texas 75252

Grant Officer

Cara Finn (and Logan 3.5 months)



Cara Finn holds a BS in Environmental Studies and Neuroscience and Behavioral Biology from Emory University. She has been with EPA's Office of Pesticide Programs since 2004. Starting in the Field and External Affairs Division, she gained experience in endangered species environmental risk assessments and public outreach. In 2005, Cara moved to the Environmental Fate and Effects Division where she focused on document lifecycle management, GIS, and extramural budget oversight. She served as the division's lead for contracts. Since 2012, Cara has been with the Biopesticides and Pollution Prevention Division where she manages the Integrated Pest Management program's grants and assists with communications.



Attendees

Marcia Anderson



Marcia is with EPA's Center of Expertise for School IPM in Dallas, Texas. She holds a PhD in Environmental Management from Montclair State University along with degrees in Biology, Environmental Design, Landscape Architecture, and Instruction and Curriculum. Marcia is a Certified Tree Expert for the State of NJ, was formerly with the EPA Region 2 Pesticides Program and has been a professor of Earth and Environmental Studies, Geology, and Oceanography at several universities.

Kaci Buhl



Kaci Buhl is a Senior Research Assistant at Oregon State University (OSU). She studied entomology (BS) and Integrated Pest Management (MS) at Michigan State University before joining the National Pesticide Information Center (NPIC) at OSU. Kaci responded to thousands of questions, one on one, from the public and professionals as they weighed their risks and options related to bugs, weeds, rodents, and other pests. She investigated pesticide incidents for the Oregon Department of Agriculture and returned to NPIC as its Coordinator in 2006.

Thomas Cook



Thomas Cook joined the Environmental Protection Agency in 1997 and has served as a Region 5 Water Division Deputy Branch Chief, Superfund Federal On-Scene-Coordinator, and Region 6 Homeland Security Advisor. He has overseen several Presidential Initiatives and 200+ Great Lakes Restoration Initiative grants and has experience in contracts and grant management, crisis management, contingency planning. Thomas has a BS in Environmental Health and Science from Northern Illinois University. Since February 2013, Thomas has served as the lead of EPA's Center of Expertise for School IPM.

Frank Ellis



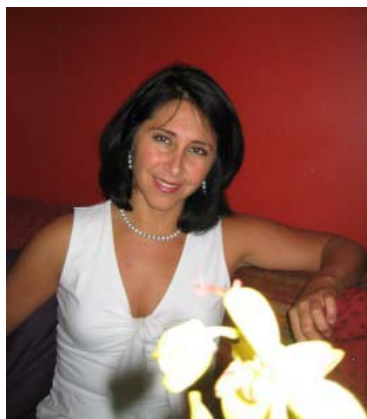
Frank Ellis has been with EPA's Office of Pesticide Programs for over 25 years, most with the Biopesticides and Pollution Prevention Division. As Chief of the Environmental Stewardship Branch, he leads the Agency's efforts to reduce pest and pesticide risk through the promotion of Integrated Pest Management (IPM). He is responsible for partnerships, grant programs, and collaborations that promote environmental stewardship and advance the IPM message. Frank holds a BS in Biology and caught the IPM bug while attaining his M.S. in Entomology at the University of Maryland.

Carrie Foss



As the Urban IPM Director, Carrie manages the WSU Urban IPM and Pesticide Safety Education Program in western Washington. This program includes recertification and pre-license training, the WSU IPM Certification Program for Landscape and Turf Professionals, School IPM, and the Structural Pest IPM Facility. The goal of the IPM training is to provide research-based information for effective plant problem management while minimizing impacts on human and environmental health. Carrie chairs the Urban Pesticide Education Strategy Team, an interagency committee that delivers web-based information for IPM in schools and households. Carrie's background includes plant problem diagnosis, research on beneficial microorganisms, and management strategies for turf and ornamental diseases.

Lorry Frigerio



Lorry Frigerio is part of the School IPM Program in EPA Headquarters under the OPP-BPPD Environmental Stewardship Branch. She has a B.S. in Chemical Engineering from Columbia University School of Engineering and Applied Sciences. She joined EPA in 1987 and has worked on a range of environmental issues and programs, including: Superfund hazardous waste remediation; international cooperation under NAFTA, the U.S./Mexico border program, and Asia Pacific Economic Cooperation; Environmental Justice advisory committee efforts; as a Special Assistant for Policy issues in the EPA Administrator's office; and, several pesticide program activities such as U.S./Mexico/Canada pesticides regulatory harmonization, state/regional/tribal liaison efforts, and School IPM.

Sherry Glick



Sherry Glick has been with the US Environmental Protection Agency for 32 years and currently serves as a member of EPA's Center of Expertise for School IPM. She has been a leader and champion for School IPM for over two decades collaborating with EPA and other stakeholders for the adoption of IPM. A graduate of Michigan State University in 1979 from the University's College of Natural Sciences where she majored in Chemistry; she is a devoted Spartan!. Sherry received the Al Gore Hammer Award for government reinvention; she was selected to the Greater Leadership Opportunity Program where she shadowed Administrator Browner and served at the Chesapeake Bay Program Office. She was then selected to lead OPP's Pesticide Risk Reduction Initiative in the early 90's which led to the creation of the Pesticide Environmental Stewardship Program and the School Integrated Pest Management Initiative. Sherry and her husband Dale are new urban residents and homeowners in Dallas.

Dawn H. Gouge Associate Professor and Associate Specialist – Public



Health Entomologist for the University of Arizona, focused on IPM implementation in community environments. Board member of the IPM Institute of North America. Serves on Federal U.S. Environmental Protection Agency (EPA) Pesticide Program Dialog Committee. Co-directs the Western Regional IPM in Schools Work Group. Serves on the National School IPM 2015 Steering Committee, and the Advisory Board of the IPM Institute



Green Shield Certification program. Subject Editor for Entomological Society of America, Journal of IPM. Also serves on National Institute of Food and Agriculture Western Region IPM Center Advisory Committee. Research efforts focus on pest ecology and reduced-hazard management of pests.

Fudd Graham



Fudd is a Research Fellow IV and Extension Specialist in the Department of Entomology and Plant Pathology at Auburn University. He worked as an Extension Agent with the Alabama Cooperative Extension System and as a Research Assistant at AU. He serves as co-chair of the Southern School IPM Work Group, as co-leader of the eXtension Urban IPM web site, as a member of National School IPM Steering



Committee and the Southern IPM Center Advisory Council, and as a board member of the Alabama Vector Management Society. He is a past board member of the Alabama Pest Control Association and served as Alabama Pesticide Education Safety Coordinator for eight years. He is also a Certified Pest Management Professional in Alabama.

Tom Green

Dr. Green has been a national leader in Integrated Pest Management (IPM) for more than twenty years. Dr. Green has dedicated his career to helping to improve health, environment and economics through IPM. He is a frequent speaker at national and regional meetings on the power of marketplace IPM to reduce health and environmental risks. He has been quoted in national publications including American Fruit Grower, Organic Gardening, Nursery Management and Production, and Dealer & Applicator. Dr. Green has provided essential support via seminars, training and program development to corporations, government and non-governmental organizations

working to improve the health and environmental consequences of agricultural production and pest control in community settings.



Janet Hurley

Janet DeStefano Hurley began her journey to pest control by taking the long route. In the early 1980's she was living in northern Oklahoma attending junior college, in 1984 she received



her Associates Degree in Business from Northern Oklahoma College and returned to Texas. Janet also has a degree in Community Health. In 2001 Janet began her career with



TAMU Extension. Since opening the Southwest Technical Resource Center for IPM in Schools and Child Care Facilities, Ms. Hurley has established a toll-free hotline, a web page, produces a bi-monthly newsletter and conducts numerous IPM trainings in Texas, Oklahoma and New Mexico.

Holly Jarvis Whitaker



Holly D. Jarvis is the Coordinator of Educational Media and Online Curriculum Development for Texas A&M AgriLife Extension. She manages publication of educational materials including publications, videos and online courses. Dr. Jarvis received her Ph.D. in Agricultural Leadership, Education and Communications from Texas A&M University in May 2012. Her professional interests include production of learner-centered educational materials, providing professional development for extension specialists, and developing continuing education curricula.

Marc Lame



Dr. Marc L. Lame is a Clinical Professor Indiana University's School of Public and Environmental Affairs and the Director of their Masters of Science Environmental Science Program. He teaches "Environmental Management", "Management Communication", "Natural Resource Management & Policy" and "Insects and the Environment". Dr. Lame holds degrees in agriculture, entomology and public administration. He was an Extension IPM specialist at the University of Arizona for 10 years and an administrator for Arizona

Department of Environmental Quality before he moved to Indiana University. Marc is an Agency appointed advisor to the USEPA's Office of Pesticide Programs, consultant to the National School IPM Steering Committee, member of the Council of Environmental Deans and Directors and the national training coordinator for the Integrated Pest Management education program offered by the National Environmental Health Association and the Centers for Disease Control and Prevention. He assisted in the development of the joint EPA/CDC statement on bed bugs as a national health concern.



Mary Mays-Delamater



Texas A&M Class of '85 with a BS in Sociology; Graduated with an MA from Texas State University (Sociology). Work experience includes teaching freshman and sophomore level Sociology at Texas State while in grad school, front line customer service management with the General Motors/SITEL partnership, serving as 2-1-1 Emergency Management Coordinator in the Texas State Operations Center. Pleased to be employed by my alma mater and having the opportunity to learn about IPM.

Bob McNally

Bob is Director of the Biopesticides and Pollution Prevention Division in the Office Of Pesticide Programs, US EPA. In that capacity, he oversees the School IPM efforts at EPA. Prior to his



current position, Bob had been OPP's Director of the Field and External Affairs Division since 2010. As Director of FEAD, Bob provided critical oversight of several significant issues, e.g., worker protection/applicator certification and training rulemaking; liaison efforts with States, regions, tribes and the international community; and extensive outreach and communication activities, including creative use of social media to reach wider audiences to describe OPP's regulatory efforts. Bob also previously served as Chief of OPP's Special Review Branch, where he was responsible for a number of high profile chemicals, such as atrazine, aldicarb and endosulfan. Bob has a Master's Degree in Public Policy from the University of

Michigan, and an undergraduate degree from the University of Maryland. Bob entered Federal Service in 1982 as a Presidential Management Intern.

Kathy Murray



Kathy Murray oversees integrated pest management activities for the Maine Department of Agriculture, Conservation and Forestry. In that capacity she provides pest management expertise in agricultural and non-agricultural settings including ornamental horticulture, livestock and poultry, and public and community health. Kathy coordinates the Maine School IPM Program which offers training, technical support and outreach to help all Maine schools adopt IPM in compliance with state regulations. She earned a Ph.D. in entomology from the University of Massachusetts and an MS, also in

entomology, from the University of Maine.

Mariel Snyder



Mariel Snyder, M.S., Project Coordinator: School IPM and Entomological Foundation. After earning her B.S. in Agricultural Communication from the University of Illinois, Mariel spent time interning for various environmental organizations, working on an organic farm and gaining experience as an administrative assistant. Her love for the outdoors and recreation led her to pursue a Masters degree in Parks and Recreation from Western Illinois University. Mariel's passion for environmental conservation and community development make the IPM Institute a perfect fit. Her interests also include

spending time with her dog, Ottis, and reading.

Tim Stock

Tim is the Associate Director at the Integrated Plant Protection Center at Oregon State



University. He leads the OSU School IPM Program and is also the State Pesticide Safety Education Program coordinator. Tim worked for the Washington State Department of Agriculture and the Pesticide Safety Education Program at UC Davis before joining the Integrated Plant Protection Center at Oregon State University in 2005.

Tim works with schools to improve pest management while reducing costs, staff workload, and pesticide use. He conducts on-site training and assessments at school districts throughout the state. He serves on the steering committees of the Western Region School IPM Implementation and Assessment Work Group and the National School IPM Working Group.

