

School & Home Integrated Pest Management (IPM) Newsletter – January 2017



COLLEGE OF
AGRICULTURE
& LIFE SCIENCES
COOPERATIVE EXTENSION

View this newsletter as a [PDF](#).
Editor: Shujuan (Lucy) Li, lisj@cals.arizona.edu

CDC on-line Classes “Vector Control for Environmental Health Professionals (VCEHP): The Importance of IPM”

VCEHP includes a subset of courses particularly helpful for understanding and addressing Zika virus and other mosquito-borne diseases.

Environmental health professionals are on the frontline of helping individuals, institutions, and communities reduce threats from mosquitoes, ticks, and other vectors. This training - Vector Control for Environmental Health Professionals - emphasizes the use of integrated pest management to address public health pests and vectors that spread diseases, including Zika virus and others.



Get Started Today

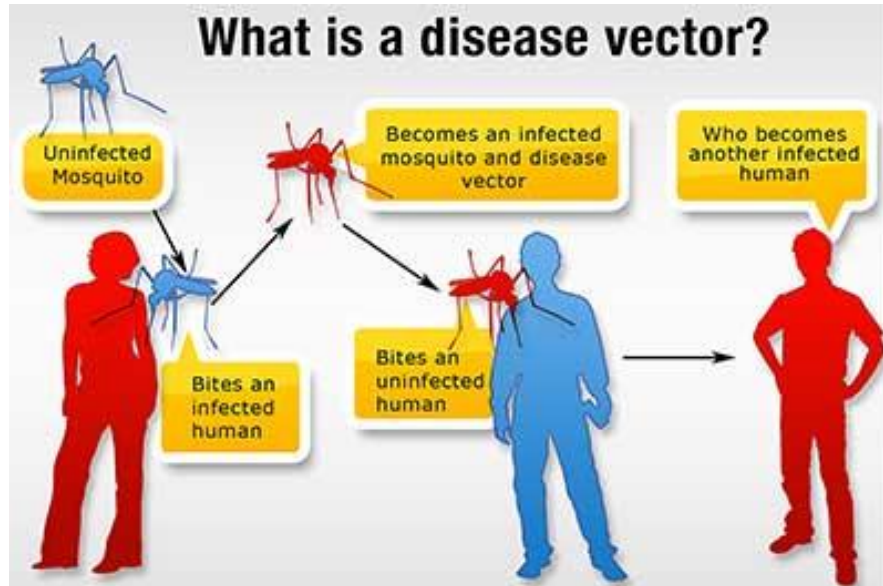
1. **Visit the Website:** <http://lms.southcentralpartnership.org/vcehp.php>
2. **Create a New Account**
3. **Enroll in VCEHP Courses**

What Are the Benefits of This Training?

- **It's free and flexible:** Take the courses you want, when you want in this online learning program.
- **It's credible:** Learn the latest science and evidence from vector control experts to improve your awareness and understanding of vector control and pest management.
- **It's practical:** Access concrete principles, practices, and resources to address vector control issues affecting your community.
- **You can earn continuing education units (CEUs):** Obtain CEUs from the National Environmental Health Association upon completing the courses and final evaluation (optional).

What Topics Are Addressed?

The training includes 11 courses. Take all of them or pick and choose (the first three are required, then take courses in any order):



- Vector-Borne Diseases of Public Health Importance
- [Integrated Pest Management](#) Basics
- Performance Assessment and Improvement of Vector Control Services
- Tick Biology and Control
- Mosquito Biology and Control
- Toxicology of [Pesticides](#)
- Rodent Management
- Pests and Vectors in Food and Housing Environments
- Special Pest Management Considerations for Schools
- Risk Communication Basics
- Bed Bug Biology and Control

What Are People Saying?

“[I am] better able to serve the citizens of my county and the cities within the county. I feel better prepared to respond to questions regarding the use of pesticides. I also found several good references should I have a question that I couldn’t answer.” - *Pilot Tester*

We tested this course with environmental health, vector control, and pest management staff.

- **4 of 5** reported they would be able to apply acquired knowledge in their work.
- **4 of 5** reported the information they gained will enhance their ability to do their job.
- **9 in 10** agreed that they would recommend this training to a colleague (consistent across all 11 courses).

How Long Does It Take?

For pilot testers, about half of the courses took around an hour each. The rest took between 2 and 2½ hours each.

Who Developed It?

Several groups and individuals worked together to create this training series, which updates CDC's past popular trainings on vector control. CDC's National Center for Environmental Health collaborated with National Network of Public Health Institutes, Texas Health Institute, Tulane University, National Environmental Health Association, and additional subject-matter experts in vector control and pest management.

Did You Know?

- Vector-borne diseases are a major public health concern.
- Since 2008, more than 51,000 state and local public health jobs have been lost representing more than 19% of the total state and local health department workforce.

Bed Bug Battle - We Want to Hear From you

The University of Arizona and several partnering research institutions are working to battle the bed bug resurgence in the United States. Researchers hope to determine the real impact and social cost of bed bugs, the risks to individuals and society, as well as the significant causes of infestations.

Please help us in the project by completing an online bed bug survey. This survey asks brief questions on how bed bugs affect your life, how bed bugs cause people stress, and what people do when trying to get rid of them. This voluntary survey should take about 10 minutes. The survey is available in English and Spanish. There is no compensation available for your participation. Your answers are anonymous and confidential while you contribute information that will help us battle the pesky parasites.

Who should take this survey? Everyone! We would like to hear from people who currently live with bed bugs, people who have dealt with them in the past, and people who have never experienced bed bugs. We are dedicated to helping community members who need it most, and sharing your experience will be extremely helpful to develop strategies to reduce the bed bug problems.

English version of Bed Bug survey: <http://www.surveymonkey.com/s/DGLQS52>

Spanish version of Bed Bug survey: <https://es.surveymonkey.com/s/F5NZXJK>

Webinars and Events

Please join in for the [2017 All Bugs Good and Bad Webinar Series](#). This webinar series provides information about good and bad insects. Webinars are free and open to everyone. Webinars will be on the **first Friday of each month at 2 p.m. Eastern time.**

Upcoming webinars include:

1. Don't Let Tramp Ants Take Over Your Home - February 3, 2017
2. Protect Your Veggie Harvest From Hungry Insects! - March 3, 2017
3. Mosquitoes and Insect Borne Diseases - April 7, 2017

For more information about upcoming and past School IPM webinars:

<http://articles.extension.org/pages/74016/2017-all-bugs-good-and-bad-webinar-series>.

The **EPA Center of Expertise for School IPM** is now hosting its [2016 - 2017 webinar series](#) featuring experts from across the country relaying educational and practical strategies for establishing and improving integrated pest management programs in schools.

Upcoming webinars include:

1. Pests of Public Health Importance and the Role of IPM in Schools - January 24, 2017
2. More Than Just a Firm Handshake: Bid and Contract Guidance for Securing IPM-Based Services for Schools - February 21, 2017
3. Feed the Kids, Not the Pests: Effective IPM for Cafeterias and Kitchen - March 14, 2017
4. Contending with Invasive Plants on School Grounds - April 17, 2017

For more information about upcoming and past School IPM webinars:

<https://www.epa.gov/managing-pests-schools/webinars-about-integrated-pest-management-schools>

February 1, Wednesday, 12:00-4:00 pm. Arizona. [Tree Health Care Workshop](#) at the Maricopa County Cooperative Extension, 4341 E. Broadway Road, Phoenix, AZ 85040

Details for the agenda and information about registration fees are at: <http://turf.arizona.edu>.

For more information about the EPA Schools program, visit:

<http://www.epa.gov/schools/>

For more information about the Community IPM, visit:

<http://www.extension.org/pages/23359/urban-integrated-pest-management-community-page>



For more information about School IPM in Arizona, visit:

<http://cals.arizona.edu/apmc/westernschoolIPM.html>

Shujuan (Lucy) Li, Assistant in Extension - Public Health IPM. Email: lisj@cals.arizona.edu

Dawn H. Gouge, Public Health IPM Expert. Email: dhgouge@cals.arizona.edu

Shaku Nair, Assistant in Extension - Community IPM. Email: nairs@email.arizona.edu

Al Fournier, IPM Assessment. Email: fournier@cals.arizona.edu

Ursula Schuch, Environmental Horticulture. Email: ukschuch@ag.arizona.edu

Kai Umeda, Extension Agent, Turf. Email: kumeda@cals.arizona.edu; <http://turf.arizona.edu>

Dave Kopec, Turf Specialist. Email: dkopec@ag.arizona.edu

Peter Warren, Extension Agent, Urban Horticulture. Email: plwarren@cals.arizona.edu

Michael Wierda, Assistant in Extension - Pesticide Safety Education. Email: mwierda@email.arizona.edu

Acknowledgements

This material is based upon work that is supported in part by the National Institute of Food and Agriculture, U.S. Department of Agriculture (USDA NIFA). Any opinions, findings, conclusions, or recommendations expressed in this publication are those of the authors and do not necessarily reflect the view of the U.S. Department of Agriculture. Additional support is provided by the U.S. Environmental Protection Agency (EPA) and the University of Arizona – Arizona Pest Management Center (APMC).



United States
Department of
Agriculture

National Institute
of Food and
Agriculture